



MASTER LEDtube InstantFit HF T8



MAS LEDtube HF 1500mm HO 20W830 T8

Philips MASTER LEDtube InstantFit T8 integrates a LED light source into a traditional fluorescent form factor. Its unique design creates a perfectly uniform visual appearance which cannot be distinguished from traditional fluorescent. Philips MASTER LEDtube InstantFit T8 is the ideal solution for customers who have higher light requirements and want to maximize value over lifetime. Full energy savings & longer lifetime result in attractive payback times and TCO benefits.

Warnings and Safety

- NOTES: The overall energy efficiency and light distribution of any installation that uses these lamps are determined by the design of the installation.

Product data

General Information		Luminous Efficacy (rated) (Nom)		145 lm/W	
Cap-Base	G13 ROT	Color Consistency	<6		
Nominal lifetime	75,000 hour(s)	Color rendering index (CRI)	80		
Switching Cycle	50,000	LLMF At End Of Nominal Lifetime (Nom)	70 %		
Lighting Technology	LED	Flickering value (PstLM) - Flickering value as per EN 61000-3-3	0.5		
Flux measurement reference	Sphere	Stroboscopic effect visibility measure (SVM)	0.2		
CE mark	Yes	Photobiological safety according to EN 62471	RG0		
EU RoHS compliant	Yes				
Light Technical		Operating and Electrical			
Color Code	830 [CCT of 3000K]	Line Frequency	20000-75000 Hz		
Beam Angle (Nom)	160 degree(s)	Input Frequency	20000-75000 Hz		
Luminous Flux	2.900 lm	Power Consumption	20 W		
Color Designation	White (WH)	Lamp Current (Max)	750 mA		
Correlated Color Temperature (Nom)	3000 K	Lamp Current (Min)	300 mA		

MASTER LEDtube InstantFit HF T8

Starting Time (Nom)	0.5 s
Warm-up time to 60% light	0.5 s
Power Factor (Fraction)	0.9
Voltage (Nom)	30-80 V
LED alternative to fluorescent lamp power	58 W
Inrush current at mains	-
Max. lamp no. on MCB B type 10A - Mains	-
Max. lamp no. on MCB B type 10A – EM ballast without Comp. Cap.	-
Max. lamp no. on MCB B type 10A – EM ballast with Comp. Cap.	-
Max. lamp no. on MCB B type 16A - Mains	-
Max. lamp no. on MCB B type 16A – EM ballast without Comp. Cap.	-
Max. lamp no. on MCB B type 16A – EM ballast with Comp. Cap.	-
Ballast Compatibility	HF

Temperature

Ambient temperature range	-20 °C to 45 °C
T-Case Maximum (Nom)	55 °C

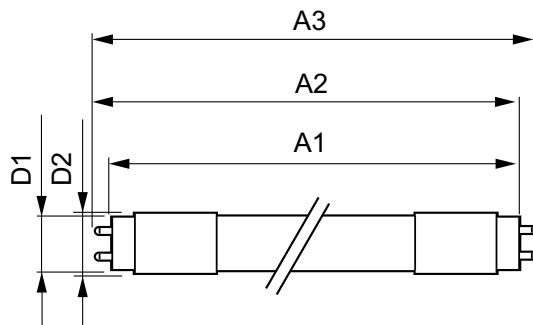
Controls and Dimming

Dimmable	Yes - Check ballast compatibility
----------	-----------------------------------

Mechanical and Housing

Bulb Finish	Frosted
-------------	---------

Dimensional drawing



Bulb Material	Plastic
Product Length	1,500 mm
Bulb Shape	T8

Approval and Application

Energy Efficiency Class	E
Energy Saving Product	Yes
Approval Marks	RoHS compliance TUV CE marking KEMA Keur certificate
Energy Consumption kWh/1000 h	20 kWh
EPREL Registration Number	1165503

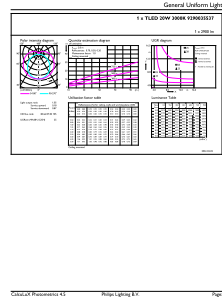
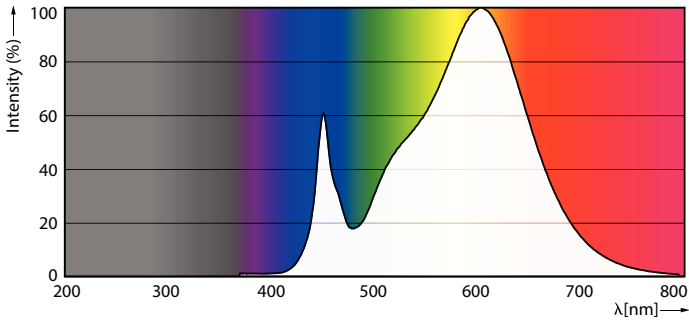
Product Data

Order product name	MAS LEDtube HF 1500mm HO 20W830 T8
Full product name	MAS LEDtube HF 1500mm HO 20W830 T8
Full product code	871951446694400
Order code	929003553702
Material Nr. (12NC)	929003553702
Numerator - Quantity Per Pack	1
EAN/UPC - Product/Case	8719514466944
Numerator - Packs per outer box	20
EAN/UPC - Case	8719514466951

Product	D1	D2	A1	A2	A3
MAS LEDtube HF 1500mm HO 20W830 T8	25.8 mm	28 mm	1,498.8 mm	1,505.9 mm	1,513 mm

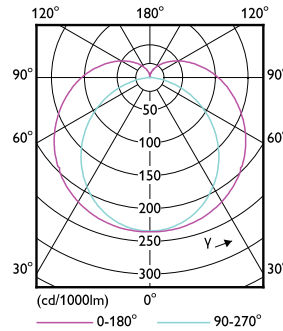
MASTER LEDtube InstantFit HF T8

Photometric data



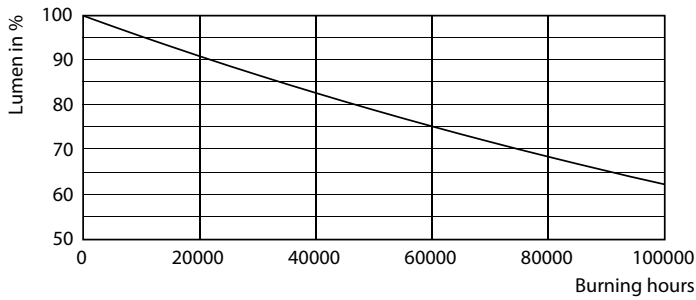
Spectral Power Distribution Colour - MAS LEDtube HF 1500mm HO 20W830 T8

General uniform lighting - MAS LEDtube HF 1500mm HO 20W830 T8

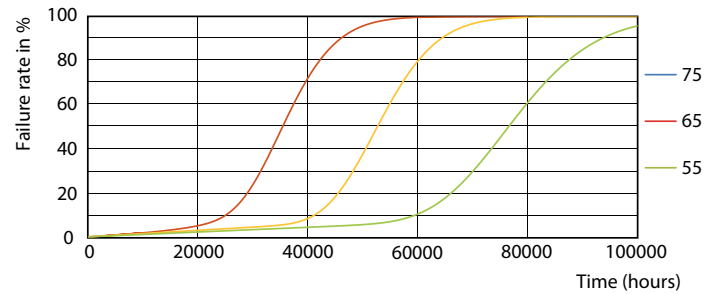


Light Distribution Diagram - MAS LEDtube HF 1500mm HO 20W830 T8

Lifetime



Lumen Maintenance Diagram - MAS LEDtube HF 1500mm HO 20W830 T8



Life Expectancy Diagram - MAS LEDtube HF 1500mm HO 20W830 T8

MASTER LEDtube InstantFit HF T8

Lifetime



Lumen Maintenance Diagram - MAS LEDtube HF 1500mm HO 20W830 T8

Life Expectancy Diagram - MAS LEDtube HF 1500mm HO 20W830 T8



Life Expectancy Diagram - MAS LEDtube HF 1500mm HO 20W830 T8

