



# MASTER LEDtube InstantFit HF T8



## MAS LEDtube HF 1200mm HO 14W865 T8

Philips MASTER LEDtube InstantFit T8 integrates a LED light source into a traditional fluorescent form factor. Its unique design creates a perfectly uniform visual appearance which cannot be distinguished from traditional fluorescent. Philips MASTER LEDtube InstantFit T8 is the ideal solution for customers who have higher light requirements and want to maximize value over lifetime. Full energy savings & longer lifetime result in attractive payback times and TCO benefits.

### Warnings and Safety

- NOTES: The overall energy efficiency and light distribution of any installation that uses these lamps are determined by the design of the installation.

### Product data

General Information		Luminous Efficacy (rated) (Nom)	
Cap-Base	G13 ROT		150 lm/W
Nominal lifetime	75,000 hour(s)	Color Consistency	<6
Switching Cycle	50,000	Color rendering index (CRI)	80
Lighting Technology	LED	LLMF At End Of Nominal Lifetime (Nom)	70 %
Flux measurement reference	Sphere	Flickering value (PstLM) - Flickering value as per EN 61000-3-3	0.5
CE mark	Yes	Stroboscopic effect visibility measure (SVM)	0.2
EU RoHS compliant	Yes	Photobiological safety according to EN 62471	RG0
Light Technical		Operating and Electrical	
Color Code	865 [CCT of 6500K]	Line Frequency	20000-75000 Hz
Beam Angle (Nom)	160 degree(s)	Input Frequency	20000-75000 Hz
Luminous Flux	2,100 lm	Power Consumption	14 W
Color Designation	Cool Daylight	Lamp Current (Max)	750 mA
Correlated Color Temperature (Nom)	6500 K	Lamp Current (Min)	300 mA

# MASTER LEDtube InstantFit HF T8

Starting Time (Nom)	0.5 s
Warm-up time to 60% light	0.5 s
Power Factor (Fraction)	0.9
Voltage (Nom)	30-80 V
LED alternative to fluorescent lamp power	36 W
Inrush current at mains	-
Max. lamp no. on MCB B type 10A - Mains	-
Max. lamp no. on MCB B type 10A – EM ballast without Comp. Cap.	-
Max. lamp no. on MCB B type 10A – EM ballast with Comp. Cap.	-
Max. lamp no. on MCB B type 16A - Mains	-
Max. lamp no. on MCB B type 16A – EM ballast without Comp. Cap.	-
Max. lamp no. on MCB B type 16A – EM ballast with Comp. Cap.	-
Ballast Compatibility	HF

## Temperature

Ambient temperature range	-20 °C to 45 °C
T-Case Maximum (Nom)	55 °C

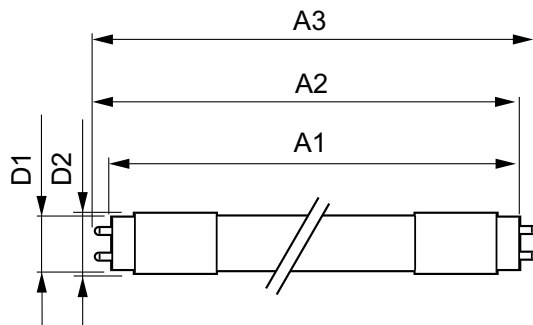
## Controls and Dimming

Dimmable	Yes - Check ballast compatibility
----------	-----------------------------------

## Mechanical and Housing

Bulb Finish	Frosted
-------------	---------

## Dimensional drawing



Bulb Material	Plastic
Product Length	1,200 mm
Bulb Shape	T8

## Approval and Application

Energy Efficiency Class	D
Energy Saving Product	Yes
Approval Marks	RoHS compliance TUV CE marking KEMA Keur certificate
Energy Consumption kWh/1000 h	14 kWh
EPREL Registration Number	1165510

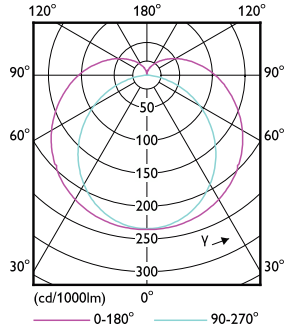
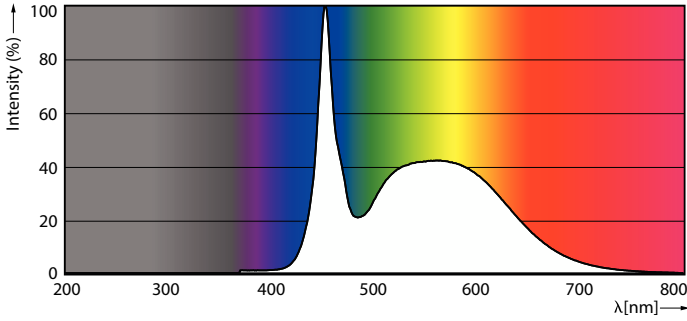
## Product Data

Order product name	MAS LEDtube HF 1200mm HO 14W865 T8
Full product name	MAS LEDtube HF 1200mm HO 14W865 T8
Full product code	871951446686900
Order code	929003553602
Material Nr. (12NC)	929003553602
Numerator - Quantity Per Pack	1
EAN/UPC - Product/Case	8719514466869
Numerator - Packs per outer box	20
EAN/UPC - Case	8719514466876

Product	D1	D2	A1	A2	A3
MAS LEDtube HF 1200mm HO 14W865 T8	25.8 mm	28 mm	1,198.2 mm	1,205.3 mm	1,212.4 mm

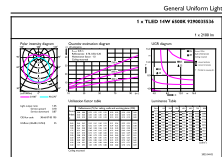
# MASTER LEDtube InstantFit HF T8

## Photometric data



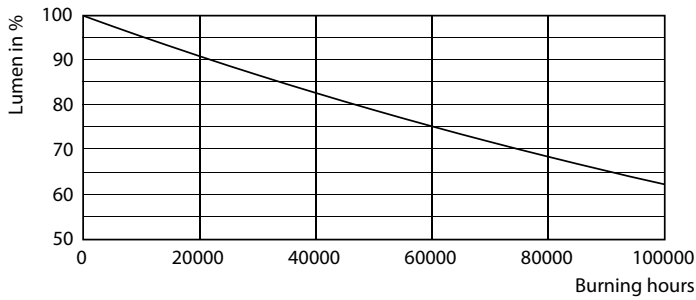
Spectral Power Distribution Colour - MAS LEDtube HF 1200mm HO 14W865 T8

Light Distribution Diagram - MAS LEDtube HF 1200mm HO 14W865 T8

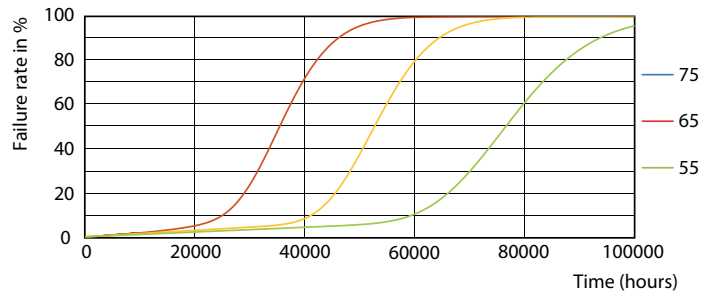


General uniform lighting - MAS LEDtube HF 1200mm HO 14W865 T8

## Lifetime



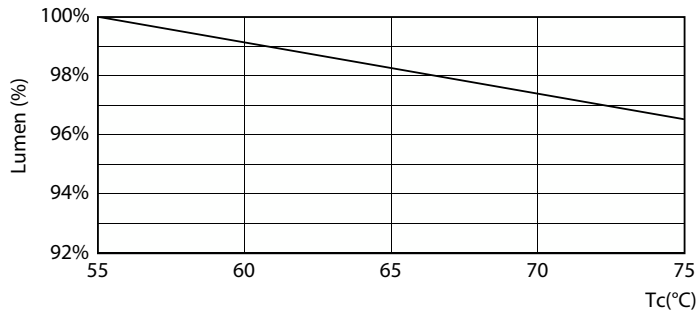
Lumen Maintenance Diagram - MAS LEDtube HF 1200mm HO 14W865 T8



Life Expectancy Diagram - MAS LEDtube HF 1200mm HO 14W865 T8

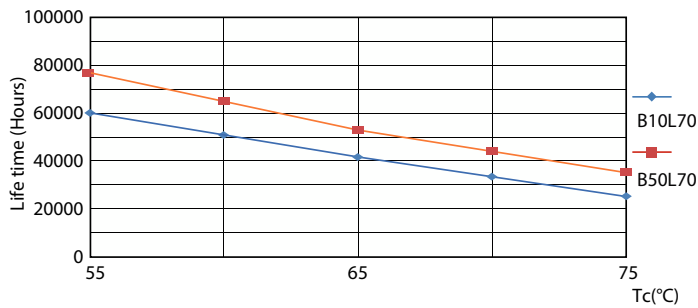
# MASTER LEDtube InstantFit HF T8

## Lifetime



Lumen Maintenance Diagram - MAS LEDtube HF 1200mm HO 14W865 T8

Life Expectancy Diagram - MAS LEDtube HF 1200mm HO 14W865 T8



Life Expectancy Diagram - MAS LEDtube HF 1200mm HO 14W865 T8

