



# PL-C/T

## 11PL-C/T/COR/32V-3CCT/MF15/P/20/1

Philips PLED 4-pin & 2-pin lamps are an affordable LED solution to replace compact fluorescent lamps. The product provides a natural lighting effect for use in many lighting applications, and provides instant energy savings, making them an environmentally-friendly solution. Available as replacements for 13W, 26W and 32W compact fluorescent lamps.

### Product data

General Information	
Cap-Base	G24Q [G24q]
Nominal lifetime	30,000 hour(s)
Switching Cycle	50,000
Lighting Technology	LED
EU RoHS compliant	Yes
Light Technical	
Color Code	3000/3500/4000
Beam Angle (Nom)	120 degree(s)
Luminous Flux	1,425 1,450 1,500 lm
Color Designation	3000/3500/4000
Correlated Color Temperature (Nom)	Selectable 3000 3500 4000 K
Luminous Efficacy (rated) (Nom)	136.00 lm/W
Color Consistency	<6
Color rendering index (CRI)	83
LLMF At End Of Nominal Lifetime (Nom)	70 %
Operating and Electrical	
Line Frequency	50 to 60 Hz
Input Frequency	50 to 60 Hz
Power Consumption	11 W

Lamp Current (Max)	98 mA
Lamp Current (Min)	39 mA
Wattage Equivalent	32 W
Starting Time (Nom)	0.5 s
Warm-up time to 60% light	0.5 s
Power Factor (Fraction)	0.9
Voltage (Nom)	120-277 V
UL Type	UL Type B
Temperature	
Ambient temperature range	-4 to +113 °F
T-Case Maximum (Nom)	167 °F
Controls and Dimming	
Dimmable	No
Mechanical and Housing	
Bulb Finish	Frosted
Bulb Material	Plastic
Product Length	3-15/16 inch
Bulb Shape	PL-C;PL-T

# PL-C/T

## Approval and Application

Energy Saving Product	Yes
Approval Marks	RoHS compliance UL certificate

## Application Conditions

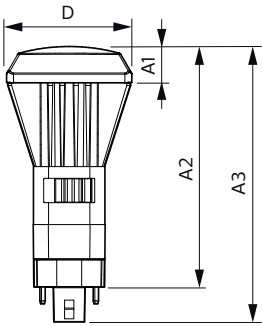
can it be used in closed luminaires	Yes
-------------------------------------	-----

## Product Data

Order product name	11PL-C/T/COR/32V-3CCT/MF15/P/20/1
--------------------	-----------------------------------

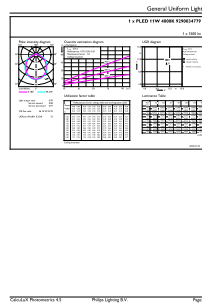
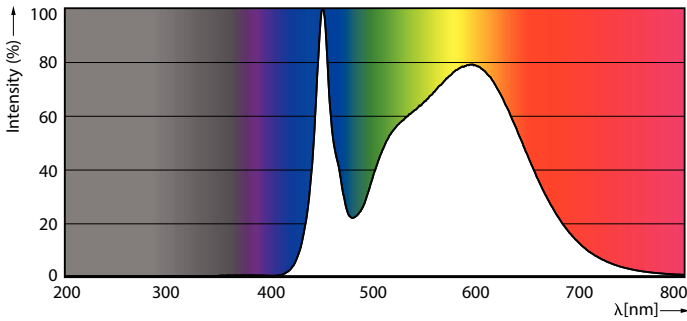
Full product name	11PL-C/T/COR/32V-3CCT/MF15/P/20/1
Order code	577924
Material Nr. (12NC)	929003477904
Numerator - Quantity Per Pack	1
EAN/UPC - Product/Case	046677577926
Numerator - Packs per outer box	20
EAN/UPC - Case	50046677577921

## Dimensional drawing



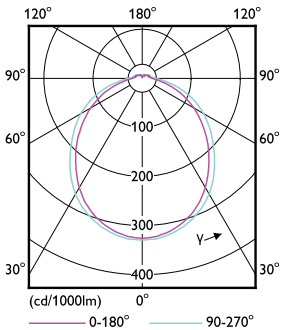
Product	D	D2	A1	A2	A3
11PL-C/T/COR/32V-3CCT/MF15/P/20/1	2-1/8 inch	5/8 inch	4-1/8 inch	4-11/16 inch	

## Photometric data



Spectral Power Distribution Colour - 11PL-C/T/COR/32V-3CCT/MF15/P/20/1

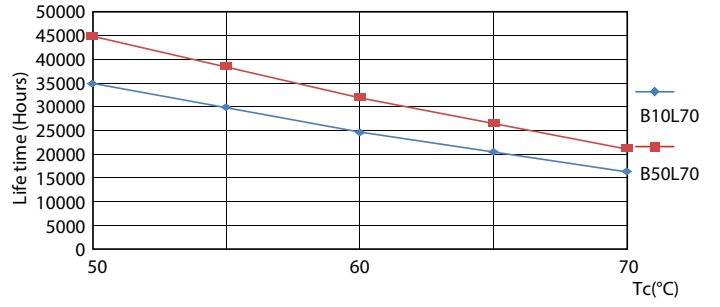
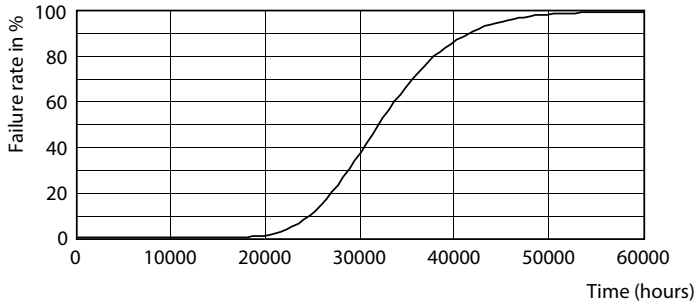
General uniform lighting - 11PL-C/T/COR/32V-3CCT/MF15/P/20/1



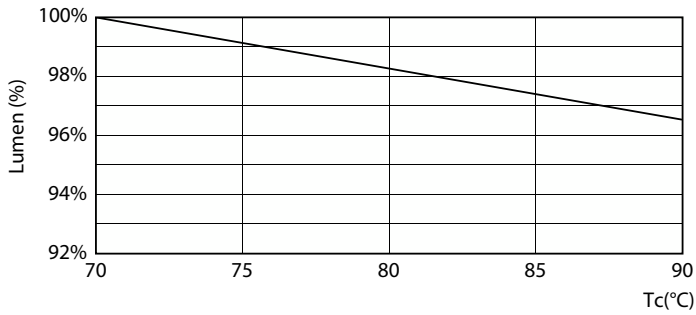
Light Distribution Diagram - 11PL-C/T/COR/32V-3CCT/MF15/P/20/1

# PL-C/T

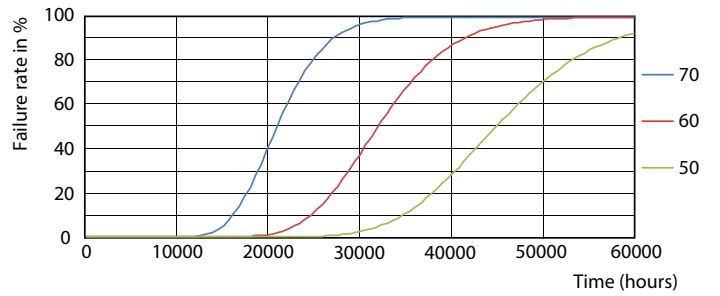
## Lifetime



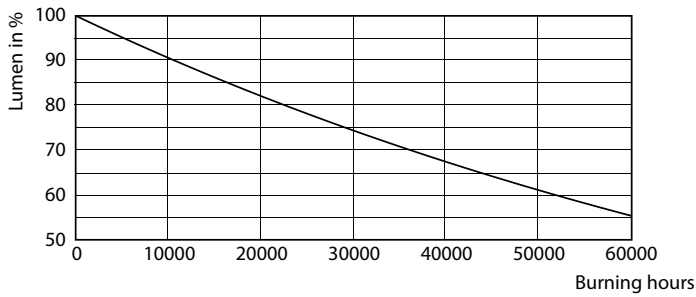
Life Expectancy Diagram - 11PL-C/T/COR/32V-3CCT/MF15/P/20/1



Life Expectancy Diagram - 11PL-C/T/COR/32V-3CCT/MF15/P/20/1



Lumen Maintenance Diagram - 11PL-C/T/COR/32V-3CCT/MF15/P/20/1



Life Expectancy Diagram - 11PL-C/T/COR/32V-3CCT/MF15/P/20/1

Lumen Maintenance Diagram - 11PL-C/T/COR/32V-3CCT/MF15/P/20/1

