

CorePro MainsFit (UL Type-B) T8

42T8HO/COR/96-840/MF54/G/R17d 10/1

The CorePro MainsFit (UL Type B) lamps are designed to be the perfect retrofit solution to move from traditional fluorescent lamps to energy saving LEDs. This ballast bypass lamp has everything needed built into the lamp with proven energy savings, long life (up to 50k hours), surge suppression and industry leading safety features. All lamps in the CorePro MainsFit family are double-ended to help simplify the installation. In addition, all lamps meet the Philips standards for light quality so that end users will be in a comfortable environment regardless of the CorePro MainsFit lamp type.

Product data

| General Information | |
|---------------------|-------------------|
| Cap-Base | R17D [R17d (RDC)] |
| Nominal lifetime | 50,000 hour(s) |
| Switching Cycle | 50,000 |
| Lighting Technology | LED |
| EU RoHS compliant | Yes |

| Light Technical | |
|------------------------------------|--------------------|
| Color Code | 840 [CCT of 4000K] |
| Beam Angle (Nom) | 240 degree(s) |
| Luminous Flux | 5,400 lm |
| Color Designation | Cool White (CW) |
| Correlated Color Temperature (Nom) | 4000 K |
| Luminous Efficacy (rated) (Nom) | 128.00 lm/W |
| Color Consistency | <6 |
| Color rendering index (CRI) | 80 |

| LLMF At End Of Nominal Lifetime (Nom) | |
|---------------------------------------|------|
| | 70 % |

| Operating and Electrical | |
|---------------------------|-------------|
| Line Frequency | 50 to 60 Hz |
| Input Frequency | 50 to 60 Hz |
| Power Consumption | 42 W |
| Lamp Current (Max) | 400 mA |
| Lamp Current (Min) | 180 mA |
| Wattage Equivalent | 110 W |
| Starting Time (Nom) | 0.5 s |
| Warm-up time to 60% light | 0.5 s |
| Power Factor (Fraction) | 0.9 |
| Voltage (Nom) | 120-277 V |
| UL Type | UL Type B |

| Temperature | |
|---------------------------|-----------------|
| Ambient temperature range | -4 °F to 113 °F |

CorePro MainsFit (UL Type-B) T8

| | |
|---------------------------------|--------------------------------|
| T-Case Maximum (Nom) | 131 °F |
| Controls and Dimming | |
| Dimmable | Limited |
| Mechanical and Housing | |
| Bulb Finish | Frosted |
| Bulb Material | Glass |
| Product Length | 94-1/2 inch |
| Bulb Shape | T8 |
| Approval and Application | |
| Energy Saving Product | Yes |
| Approval Marks | RoHS compliance UL certificate |

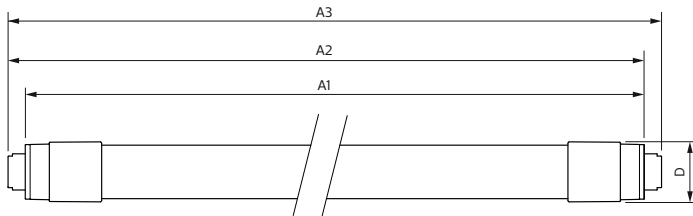
Application Conditions

can it be used in closed luminaires Yes

Product Data

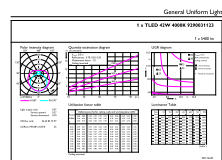
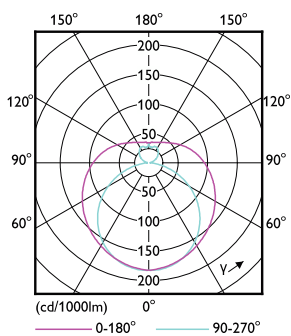
| | |
|---------------------------------|------------------------------------|
| Order product name | 42T8HO/COR/96-840/MF54/G/R17d 10/1 |
| Full product name | 42T8HO/COR/96-840/MF54/G/R17d 10/1 |
| Order code | 575746 |
| Material Nr. (12NC) | 929003112304 |
| Numerator - Quantity Per Pack | 1 |
| EAN/UPC - Product/Case | 046677575748 |
| Numerator - Packs per outer box | 10 |
| EAN/UPC - Case | 50046677575743 |

Dimensional drawing



| Product | D2 | A1 | A2 | A3 |
|------------------------------------|------------|--------------|---------------|---------------|
| 42T8HO/COR/96-840/MF54/G/R17d 10/1 | 1-1/8 inch | 93-5/16 inch | 93-11/16 inch | 93-15/16 inch |

Photometric data

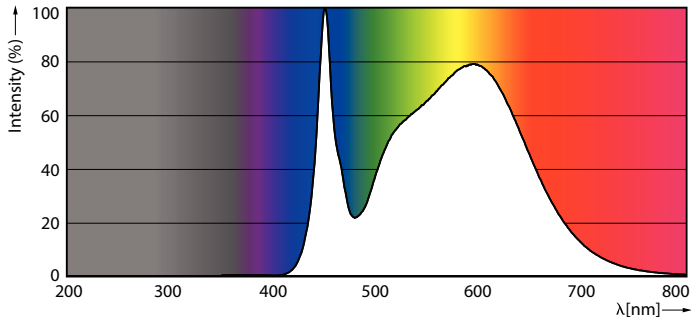


Light Distribution Diagram - 42T8HO/COR/96-840/MF54/G/R17d 10/1

General uniform lighting - 42T8HO/COR/96-840/MF54/G/R17d 10/1

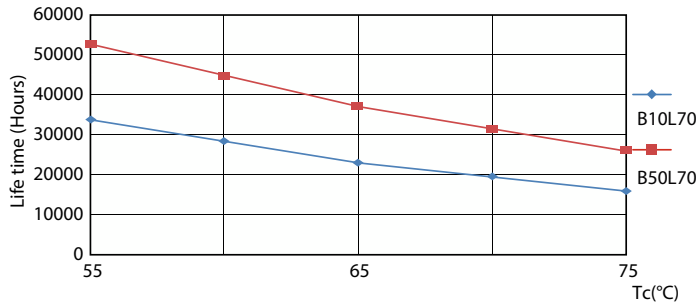
CorePro MainsFit (UL Type-B) T8

Photometric data

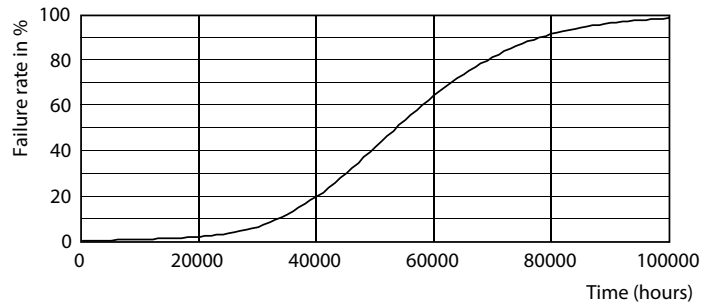


Spectral Power Distribution Colour - 42T8HO/COR/96-840/MF54/G/R17d 10/1

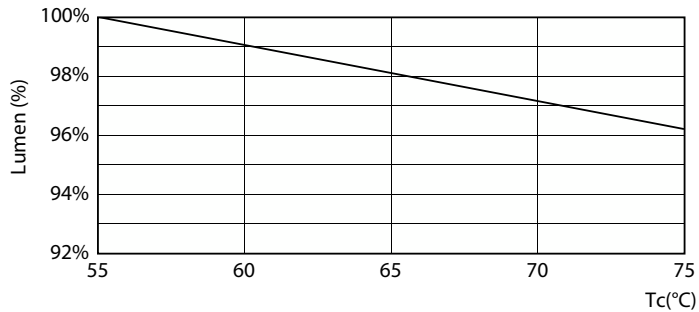
Lifetime



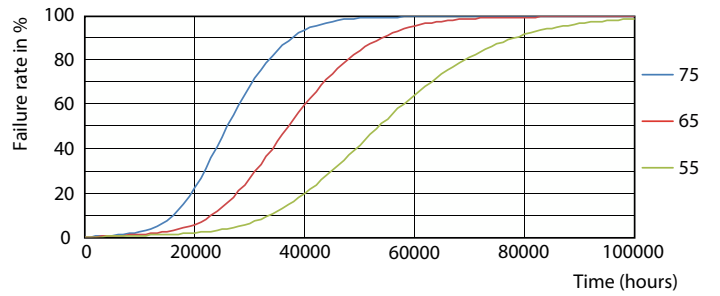
Life Expectancy Diagram - 42T8HO/COR/96-840/MF54/G/R17d 10/1



Life Expectancy Diagram - 42T8HO/COR/96-840/MF54/G/R17d 10/1



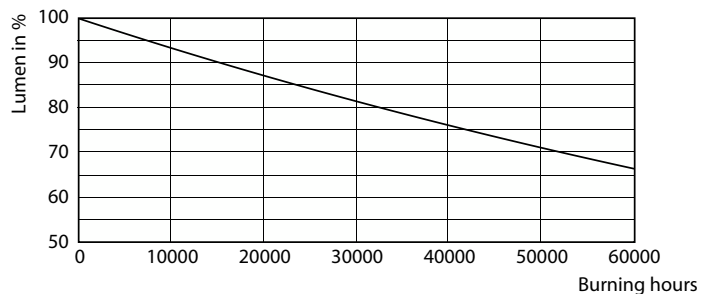
Lumen Maintenance Diagram - 42T8HO/COR/96-840/MF54/G/R17d 10/1



Life Expectancy Diagram - 42T8HO/COR/96-840/MF54/G/R17d 10/1

CorePro MainsFit (UL Type-B) T8

Lifetime



Lumen Maintenance Diagram - 42T8HO/COR/96-840/MF54/G/R17d 10/1

