

# CorePro MainsFit (UL Type-B) T8

42T8HO/COR/96-840/MF54/G/FA8 10/1

The CorePro MainsFit (UL Type B) lamps are designed to be the perfect retrofit solution to move from traditional fluorescent lamps to energy saving LEDs. This ballast bypass lamp has everything needed built into the lamp with proven energy savings, long life (up to 50k hours), surge suppression and industry leading safety features. All lamps in the CorePro MainsFit family are double-ended to help simplify the installation. In addition, all lamps meet the Philips standards for light quality so that end users will be in a comfortable environment regardless of the CorePro MainsFit lamp type.

## Product data

General Information	
Cap-Base	FA8 [FA8]
Nominal lifetime	50,000 hour(s)
Switching Cycle	50,000
Lighting Technology	LED
EU RoHS compliant	Yes

Light Technical	
Color Code	840 [CCT of 4000K]
Beam Angle (Nom)	240 degree(s)
Luminous Flux	5,400 lm
Color Designation	Cool White (CW)
Correlated Color Temperature (Nom)	4000 K
Luminous Efficacy (rated) (Nom)	128.00 lm/W
Color Consistency	<6
Color rendering index (CRI)	80

LLMF At End Of Nominal Lifetime (Nom) 70 %	
--	--

Operating and Electrical	
Line Frequency	50 to 60 Hz
Input Frequency	50 to 60 Hz
Power Consumption	42 W
Lamp Current (Max)	400 mA
Lamp Current (Min)	180 mA
Wattage Equivalent	75 W
Starting Time (Nom)	0.5 s
Warm-up time to 60% light	0.5 s
Power Factor (Fraction)	0.9
Voltage (Nom)	120-277 V
UL Type	UL Type B

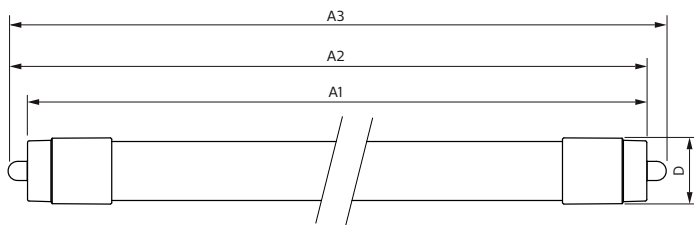
Temperature	
Ambient temperature range	-4 °F to 113 °F

# CorePro MainsFit (UL Type-B) T8

T-Case Maximum (Nom)	131 °F
<b>Controls and Dimming</b>	
Dimmable	Limited
<b>Mechanical and Housing</b>	
Bulb Finish	Frosted
Bulb Material	Glass
Product Length	94-1/2 inch
Bulb Shape	T8
<b>Approval and Application</b>	
Energy Saving Product	Yes
Approval Marks	RoHS compliance UL certificate DLC compliance

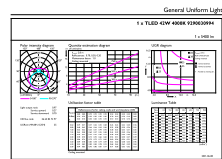
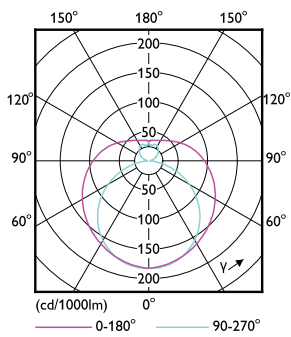
<b>Application Conditions</b>	
can it be used in closed luminaires	Yes
<b>Product Data</b>	
Order product name	42T8HO/COR/96-840/MF54/G/FA8 10/1
Full product name	42T8HO/COR/96-840/MF54/G/FA8 10/1
Order code	575134
Material Nr. (12NC)	929003099404
Numerator - Quantity Per Pack	1
EAN/UPC - Product/Case	046677575137
Numerator - Packs per outer box	10
EAN/UPC - Case	50046677575132

## Dimensional drawing



Product	D2	A1	A2	A3
42T8HO/COR/96-840/MF54/G/FA8 10/1	1-1/8 inch	93-5/16 inch	93-11/16 inch	94-1/16 inch

## Photometric data

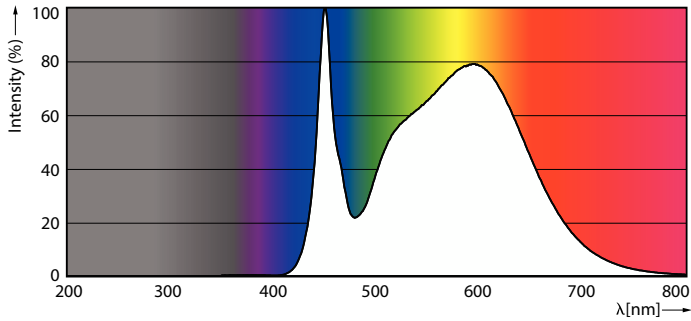


Light Distribution Diagram - 42T8HO/COR/96-840/MF54/G/FA8 10/1

General uniform lighting - 42T8HO/COR/96-840/MF54/G/FA8 10/1

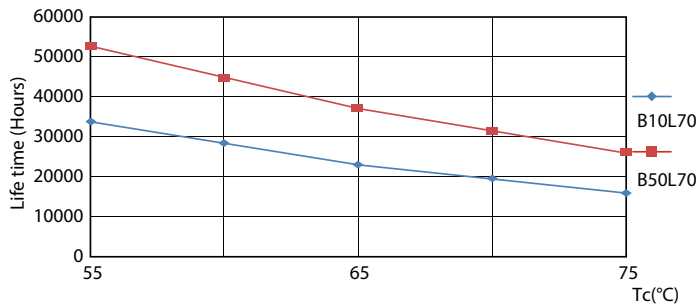
# CorePro MainsFit (UL Type-B) T8

## Photometric data

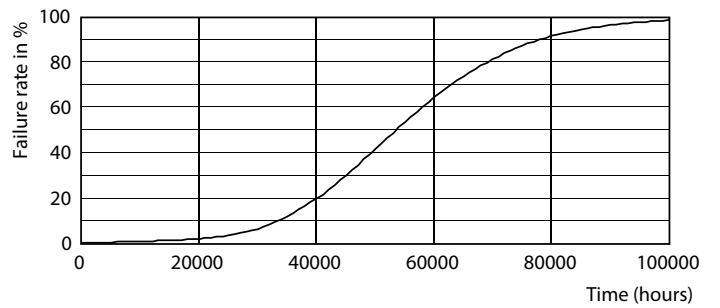


Spectral Power Distribution Colour - 42T8HO/COR/96-840/MF54/G/FA8 10/1

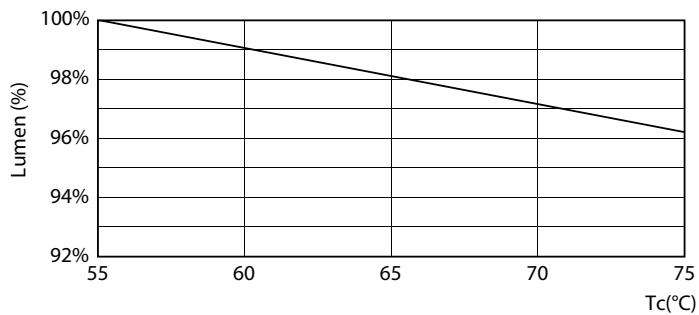
## Lifetime



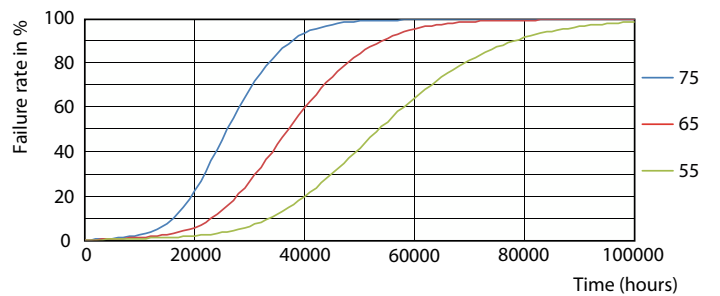
Life Expectancy Diagram - 42T8HO/COR/96-840/MF54/G/FA8 10/1



Life Expectancy Diagram - 42T8HO/COR/96-840/MF54/G/FA8 10/1



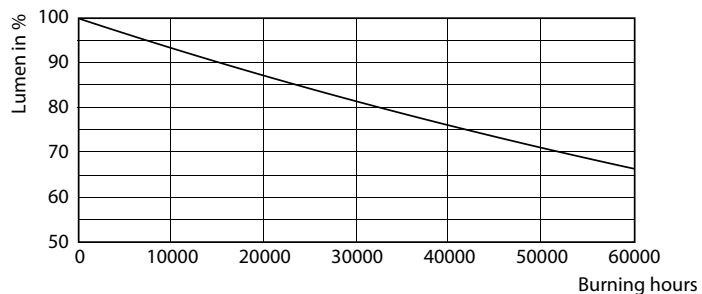
Lumen Maintenance Diagram - 42T8HO/COR/96-840/MF54/G/FA8 10/1



Life Expectancy Diagram - 42T8HO/COR/96-840/MF54/G/FA8 10/1

# CorePro MainsFit (UL Type-B) T8

## Lifetime



Lumen Maintenance Diagram - 42T8HO/COR/96-840/MF54/G/FA8 10/1

