



# MASTER UltraEfficient LED bulb

## MAS LEDBulbND2.3-40W E27830 A60CL G EELA

This is the most efficient LED bulb from Philips brand. 210lm/W helps to concrete the company statement of sustainability. 50000 hour lifetime helps to extend the replacement cycle to reduce the waste. This is not only the high SPEC product, but also keep the light quality of Philips brand

### Product data

General Information	
Cap-Base	E27
Nominal lifetime	50,000 hour(s)
Switching Cycle	50,000
Lighting Technology	LED
Flux measurement reference	Sphere
CE mark	Yes
EU RoHS compliant	Yes

Light Technical	
Color Code	830 [CCT of 3000K]
Luminous Flux	485 lm
Color Designation	White (WH)
Correlated Color Temperature (Nom)	3000 K
Luminous Efficacy (rated) (Nom)	210.00 lm/W
Color Consistency	<6
Color rendering index (CRI)	80
LLMF At End Of Nominal Lifetime (Nom)	70 %

Operating and Electrical	
Flickering value (PstLM) - Flickering value as per EN 61000-3-3	1
Stroboscopic effect visibility measure (SVM)	0.4
Photobiological safety according to EN 62471	RG1
Line Frequency	50 to 60 Hz
Input Frequency	50 to 60 Hz
Power Consumption	2.3 W
Lamp Current (Nom)	30 mA
Wattage Equivalent	40 W
Starting Time (Nom)	0.5 s
Warm-up time to 60% light	0.5 s
Power Factor (Fraction)	0.4
Voltage (Nom)	220-240 V

# MASTER UltraEfficient LED bulb

## Temperature

T-Case Maximum (Nom)	35 °C
----------------------	-------

## Controls and Dimming

Dimmable	No
----------	----

## Mechanical and Housing

Bulb Finish	Clear
Bulb Shape	A60

## Approval and Application

Energy Efficiency Class	A
Energy Consumption kWh/1000 h	3 kWh
EPREL Registration Number	1370027
EyeComfort	Yes

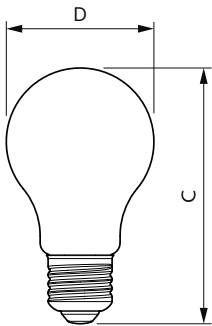
## Application Conditions

can it be used in closed luminaires	No
-------------------------------------	----

## Product Data

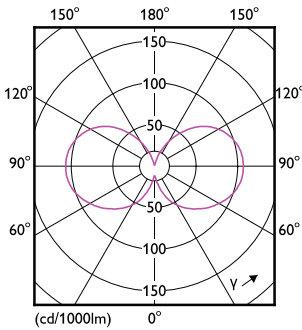
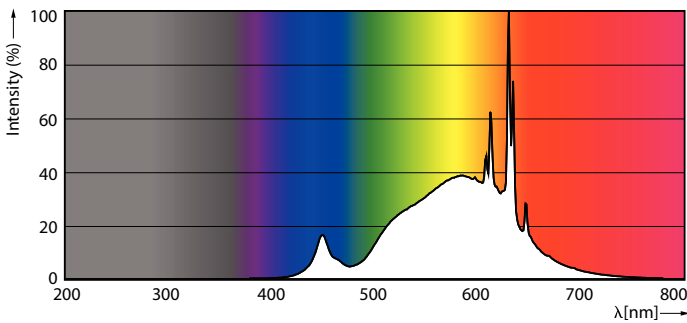
Order product name	MAS LEDBulbND2.3-40W E27830 A60CL G EELA
Full product name	MAS LEDBulbND2.3-40W E27830 A60CL G EELA
Full product code	871951442073100
Order code	929003066402
Material Nr. (12NC)	929003066402
Numerator - Quantity Per Pack	1
EAN/UPC - Product/Case	8719514420731
Numerator - Packs per outer box	10
EAN/UPC - Case	8719514420748

## Dimensional drawing



Product	D	C
MAS LEDBulbND2.3-40W E27830 A60CL G EELA	60 mm	105 mm

## Photometric data

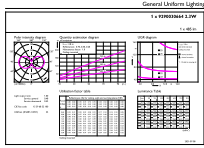


Spectral Power Distribution Colour - MAS LEDBulbND2.3-40W E27830  
A60CL G EELA

Light Distribution Diagram - MAS LEDBulbND2.3-40W E27830 A60CL G  
EELA

# MASTER UltraEfficient LED bulb

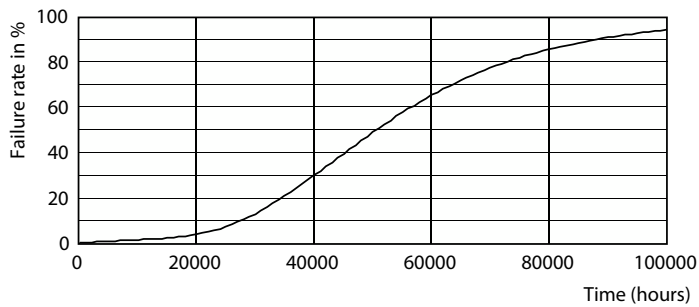
## Photometric data



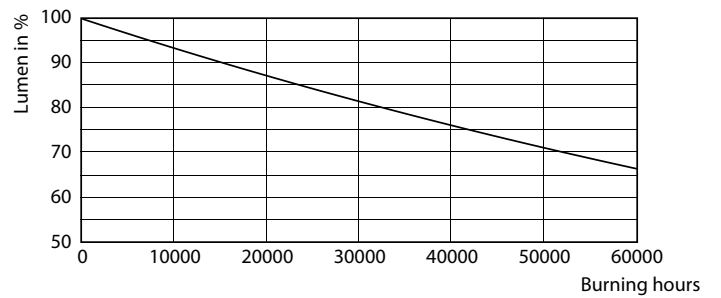
Technical Parameters 43  
Page 10

General uniform lighting - MAS LEDBulbND2.3-40W E27830 A60CL G EELA

## Lifetime



Life Expectancy Diagram - MAS LEDBulbND2.3-40W E27830 A60CL G EELA



Lumen Maintenance Diagram - MAS LEDBulbND2.3-40W E27830 A60CL G EELA

