



MASTER LEDtube Mains T5



MAS LEDtube 1200mm HE 16.5W 840 T5 EU

The new Philips Master LEDtube Mains T5 brings simplicity to your lighting project. You don't need to pay attention to the driver technology anymore. Thanks to a unique design, Philips MASTER LEDtube Mains T5 installs in luminaires operating on mains power connection. So simple to operate! . Perfectly safe, reliable & easy to install Philips MASTER LEDtube Mains T5 is the ideal alternative to standard fluorescent tubes to maximize value over lifetime with high energy saving and lower maintenance costs.

Product data

General Information	
Cap-Base	G5
Nominal lifetime	50,000 hour(s)
Switching Cycle	200,000
Lighting Technology	LED
Flux measurement reference	Sphere
CE mark	Yes
EU RoHS compliant	Yes

Light Technical	
Color Code	840 [CCT of 4000K]
Beam Angle (Nom)	200 degree(s)
Luminous Flux	2,500 lm
Color Designation	Cool White (CW)
Correlated Color Temperature (Nom)	4000 K
Luminous Efficacy (rated) (Nom)	151 lm/W
Color Consistency	<6
Color rendering index (CRI)	80

Operating and Electrical	
LLMF At End Of Nominal Lifetime (Nom)	70 %
Flickering value (PstLM) - Flickering value as per EN 61000-3-3	1
Stroboscopic effect visibility measure (SVM)	0.4
Photobiological safety according to EN 62471	RG0

Line Frequency	50 to 60 Hz
Input Frequency	50 to 60 Hz
Power Consumption	16.5 W
Lamp Current (Nom)	85 mA
Starting Time (Nom)	0.5 s
Warm-up time to 60% light	0.5 s
Power Factor (Fraction)	0.9
Voltage (Nom)	220-240 V
LED alternative to fluorescent lamp power	28 W
Inrush current at mains	7
Max. lamp no. on MCB B type 10A - Mains	76

MASTER LEDtube Mains T5

Max. lamp no. on MCB B type 10A – EM ballast without Comp. Cap.	-
Max. lamp no. on MCB B type 10A – EM ballast with Comp. Cap.	-
Max. lamp no. on MCB B type 16A – Mains	121
Max. lamp no. on MCB B type 16A – EM ballast without Comp. Cap.	-
Max. lamp no. on MCB B type 16A – EM ballast with Comp. Cap.	-
Ballast Compatibility	Mains

Temperature

Ambient temperature range	-20 to +45 °C
T-Case Maximum (Nom)	55 °C

Controls and Dimming

Dimmable	No
----------	----

Mechanical and Housing

Bulb Finish	Frosted
Bulb Material	Glass
Product Length	1,200 mm
Bulb Shape	T5

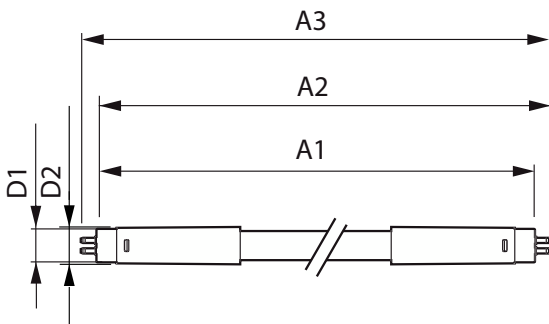
Approval and Application

Energy Efficiency Class	D
Energy Saving Product	Yes
Approval Marks	RoHS compliance TUV CE marking KEMA Keur certificate
Energy Consumption kWh/1000 h	17 kWh
EPREL Registration Number	1476407

Product Data

Order product name	MAS LEDtube 1200mm HE 16.5W 840 T5 EU
Full product name	MAS LEDtube 1200mm HE 16.5W 840 T5 EU
Full product code	871951433433500
Order code	929003044502
Material Nr. (12NC)	929003044502
Numerator - Quantity Per Pack	1
EAN/UPC - Product/Case	8719514334335
Numerator - Packs per outer box	10
EAN/UPC - Case	8719514334342

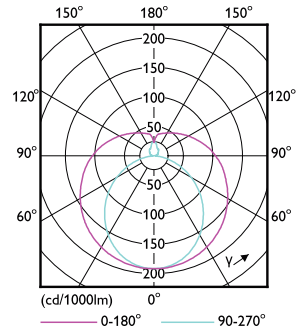
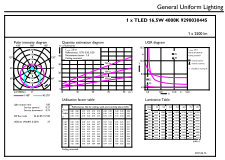
Dimensional drawing



Product	D1	D2	A1	A2	A3
MAS LEDtube 1200mm HE 16.5W 840 T5 EU	15.7 mm	19 mm	1,149 mm	1,156.1 mm	1,163.2 mm

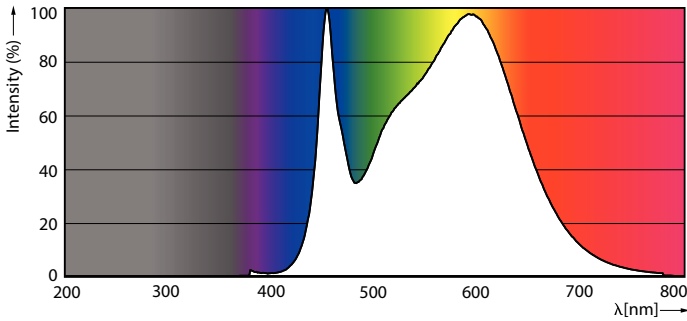
MASTER LEDtube Mains T5

Photometric data



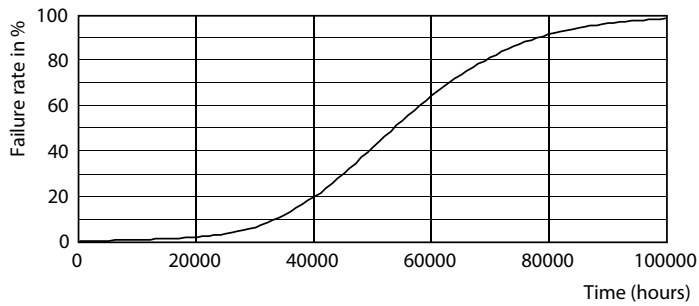
General uniform lighting - MAS LEDtube 1200mm HE 16.5W 840 T5 EU

Light Distribution Diagram - MAS LEDtube 1200mm HE 16.5W 840 T5 EU

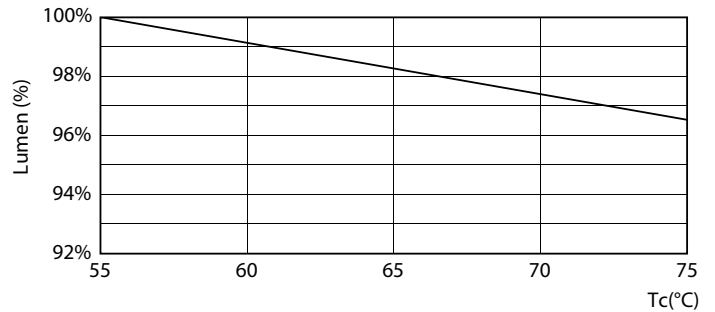


Spectral Power Distribution Colour - MAS LEDtube 1200mm HE 16.5W 840 T5 EU

Lifetime



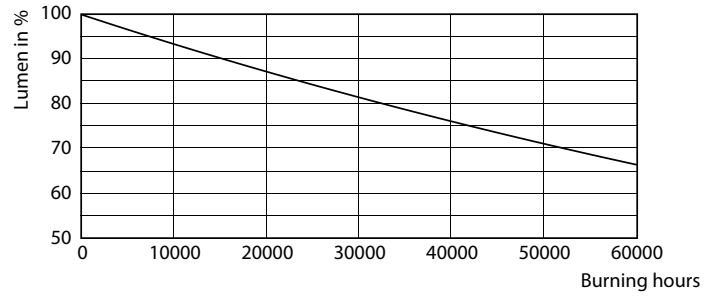
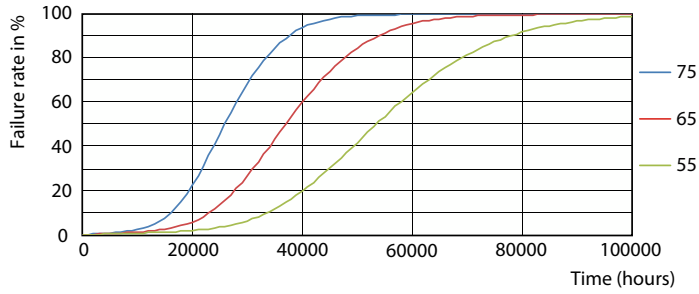
Life Expectancy Diagram - MAS LEDtube 1200mm HE 16.5W 840 T5 EU



Lumen Maintenance Diagram - MAS LEDtube 1200mm HE 16.5W 840 T5 EU

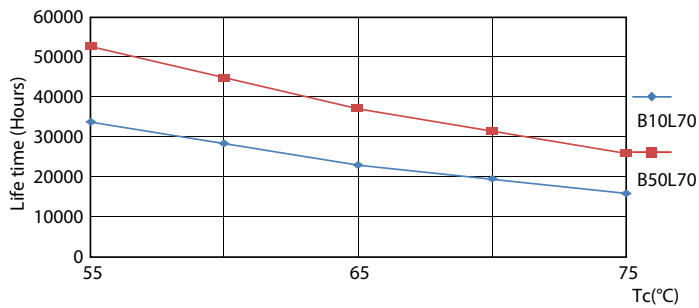
MASTER LEDtube Mains T5

Lifetime



Life Expectancy Diagram - MAS LEDtube 1200mm HE 16.5W 840 T5 EU

Lumen Maintenance Diagram - MAS LEDtube 1200mm HE 16.5W 840 T5 EU



Life Expectancy Diagram - MAS LEDtube 1200mm HE 16.5W 840 T5 EU

