



# MASTER LEDtube Mains T5



## MAS LEDtube 1200mm HE 16.5W 830 T5 EU

The new Philips Master LEDtube Mains T5 brings simplicity to your lighting project. You don't need to pay attention to the driver technology anymore. Thanks to a unique design, Philips MASTER LEDtube Mains T5 installs in luminaires operating on mains power connection. So simple to operate! . Perfectly safe, reliable & easy to install Philips MASTER LEDtube Mains T5 is the ideal alternative to standard fluorescent tubes to maximize value over lifetime with high energy saving and lower maintenance costs.

### Product data

General Information		LLMF At End Of Nominal Lifetime (Nom)	
Cap-Base	G5		70 %
Nominal lifetime	50,000 hour(s)	Flickering value (PstLM) - Flickering value as per EN 61000-3-3	1
Switching Cycle	200,000	Stroboscopic effect visibility measure (SVM)	0.4
Lighting Technology	LED	Photobiological safety according to EN 62471	RG0
Flux measurement reference	Sphere	<b>Operating and Electrical</b>	
CE mark	Yes	Line Frequency	50 to 60 Hz
EU RoHS compliant	Yes	Input Frequency	50 to 60 Hz
<b>Light Technical</b>		Power Consumption	16.5 W
Color Code	830 [CCT of 3000K]	Lamp Current (Nom)	85 mA
Beam Angle (Nom)	200 degree(s)	Starting Time (Nom)	0.5 s
Luminous Flux	2,300 lm	Warm-up time to 60% light	0.5 s
Color Designation	White (WH)	Power Factor (Fraction)	0.9
Correlated Color Temperature (Nom)	3000 K	Voltage (Nom)	220-240 V
Luminous Efficacy (rated) (Nom)	139 lm/W	LED alternative to fluorescent lamp power	28 W
Color Consistency	<6	Inrush current at mains	7
Color rendering index (CRI)	80	Max. lamp no. on MCB B type 10A - Mains	76

# MASTER LEDtube Mains T5

Max. lamp no. on MCB B type 10A – EM ballast without Comp. Cap.	-
Max. lamp no. on MCB B type 10A – EM ballast with Comp. Cap.	-
Max. lamp no. on MCB B type 16A – Mains	121
Max. lamp no. on MCB B type 16A – EM ballast without Comp. Cap.	-
Max. lamp no. on MCB B type 16A – EM ballast with Comp. Cap.	-
Ballast Compatibility	Mains

## Temperature

Ambient temperature range	-20 to +45 °C
T-Case Maximum (Nom)	55 °C

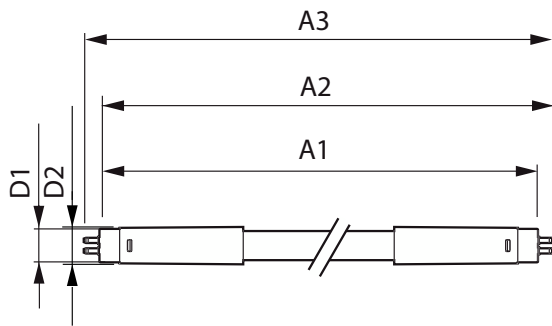
## Controls and Dimming

Dimmable	No
----------	----

## Mechanical and Housing

Bulb Finish	Frosted
Bulb Material	Glass
Product Length	1,200 mm
Bulb Shape	T5

## Dimensional drawing



## Approval and Application

Energy Efficiency Class	D
Energy Saving Product	Yes
Approval Marks	RoHS compliance TUV CE marking KEMA Keur certificate
Energy Consumption kWh/1000 h	17 kWh
EPREL Registration Number	1476410

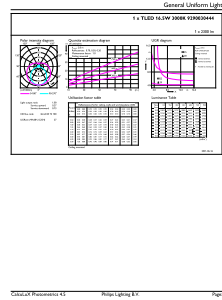
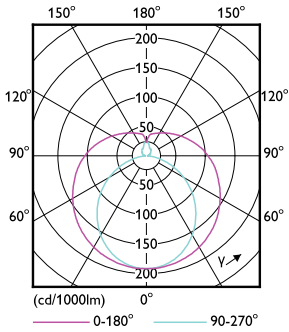
## Product Data

Order product name	MAS LEDtube 1200mm HE 16.5W 830 T5 EU
Full product name	MAS LEDtube 1200mm HE 16.5W 830 T5 EU
Full product code	871951433431100
Order code	929003044402
Material Nr. (12NC)	929003044402
Numerator - Quantity Per Pack	1
EAN/UPC - Product/Case	8719514334311
Numerator - Packs per outer box	10
EAN/UPC - Case	8719514334328

Product	D1	D2	A1	A2	A3
MAS LEDtube 1200mm HE 16.5W 830 T5 EU	15.7 mm	19 mm	1,149 mm	1,156.1 mm	1,163.2 mm

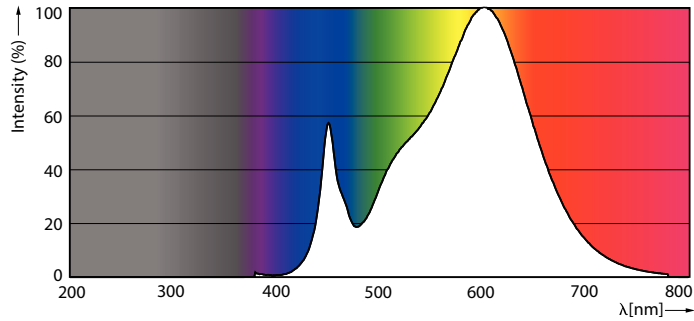
# MASTER LEDtube Mains T5

## Photometric data



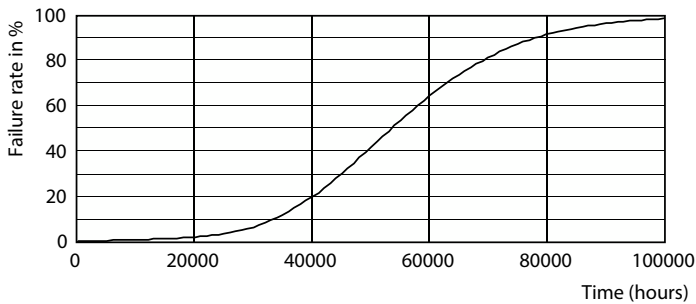
Light Distribution Diagram - MAS LEDtube 1200mm HE 16.5W 830 T5 EU

General uniform lighting - MAS LEDtube 1200mm HE 16.5W 830 T5 EU

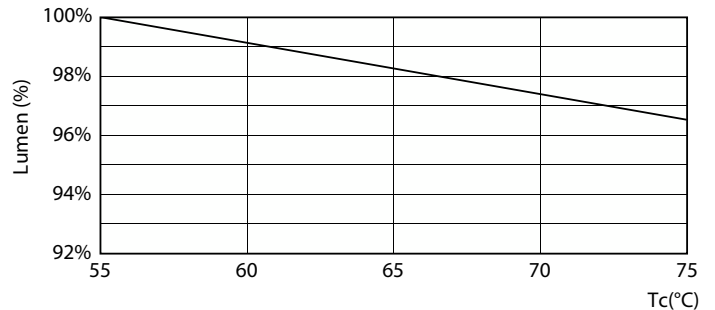


Spectral Power Distribution Colour - MAS LEDtube 1200mm HE 16.5W 830 T5 EU

## Lifetime



Life Expectancy Diagram - MAS LEDtube 1200mm HE 16.5W 830 T5 EU



Lumen Maintenance Diagram - MAS LEDtube 1200mm HE 16.5W 830 T5 EU

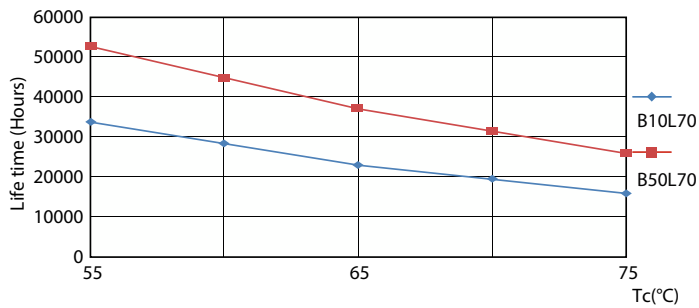
# MASTER LEDtube Mains T5

## Lifetime



Life Expectancy Diagram - MAS LEDtube 1200mm HE 16.5W 830 T5 EU

Lumen Maintenance Diagram - MAS LEDtube 1200mm HE 16.5W 830 T5 EU



Life Expectancy Diagram - MAS LEDtube 1200mm HE 16.5W 830 T5 EU

