



MASTER LEDtube Mains T5



MAS LEDtube 600mm HE 8W 830 T5 EU

The new Philips Master LEDtube Mains T5 brings simplicity to your lighting project. You don't need to pay attention to the driver technology anymore. Thanks to a unique design, Philips MASTER LEDtube Mains T5 installs in luminaires operating on mains power connection. So simple to operate! . Perfectly safe, reliable & easy to install Philips MASTER LEDtube Mains T5 is the ideal alternative to standard fluorescent tubes to maximize value over lifetime with high energy saving and lower maintenance costs.

Product data

General Information		LLMF At End Of Nominal Lifetime (Nom)	
Cap-Base	G5		70 %
Nominal lifetime	50,000 hour(s)	Flickering value (PstLM) - Flickering value as per EN 61000-3-3	1
Switching Cycle	200,000	Stroboscopic effect visibility measure (SVM)	0.4
Lighting Technology	LED	Photobiological safety according to EN 62471	RG0
Flux measurement reference	Sphere	Operating and Electrical	
CE mark	Yes	Line Frequency	50 to 60 Hz
EU RoHS compliant	Yes	Input Frequency	50 to 60 Hz
Light Technical		Power Consumption	8 W
Color Code	830 [CCT of 3000K]	Lamp Current (Nom)	40 mA
Beam Angle (Nom)	200 degree(s)	Starting Time (Nom)	0.5 s
Luminous Flux	1,000 lm	Warm-up time to 60% light	0.5 s
Color Designation	White (WH)	Power Factor (Fraction)	0.9
Correlated Color Temperature (Nom)	3000 K	Voltage (Nom)	220-240 V
Luminous Efficacy (rated) (Nom)	125 lm/W	LED alternative to fluorescent lamp power	14 W
Color Consistency	<6	Inrush current at mains	4.5
Color rendering index (CRI)	80	Max. lamp no. on MCB B type 10A - Mains	160

MASTER LEDtube Mains T5

Max. lamp no. on MCB B type 10A – EM ballast without Comp. Cap.	-
Max. lamp no. on MCB B type 10A – EM ballast with Comp. Cap.	-
Max. lamp no. on MCB B type 16A – Mains	254
Max. lamp no. on MCB B type 16A – EM ballast without Comp. Cap.	-
Max. lamp no. on MCB B type 16A – EM ballast with Comp. Cap.	-
Ballast Compatibility	Mains

Temperature

Ambient temperature range	-20 to +45 °C
T-Case Maximum (Nom)	50 °C

Controls and Dimming

Dimmable	No
----------	----

Mechanical and Housing

Bulb Finish	Frosted
Bulb Material	Glass
Product Length	600 mm
Bulb Shape	T5

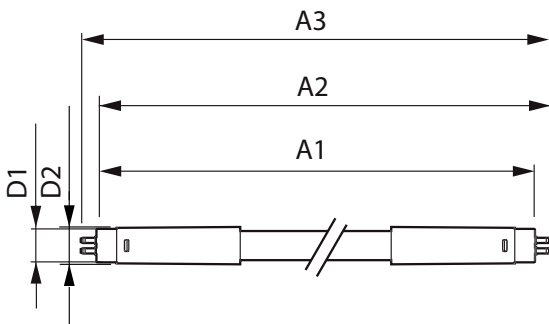
Approval and Application

Energy Efficiency Class	E
Energy Saving Product	Yes
Approval Marks	RoHS compliance TUV CE marking KEMA Keur certificate
Energy Consumption kWh/1000 h	8 kWh
EPREL Registration Number	1476408

Product Data

Order product name	MAS LEDtube 600mm HE 8W 830 T5 EU
Full product name	MAS LEDtube 600mm HE 8W 830 T5 EU
Full product code	871951433425000
Order code	929003044102
Material Nr. (12NC)	929003044102
Numerator - Quantity Per Pack	1
EAN/UPC - Product/Case	8719514334250
Numerator - Packs per outer box	10
EAN/UPC - Case	8719514334267

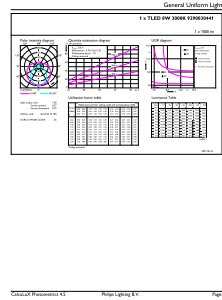
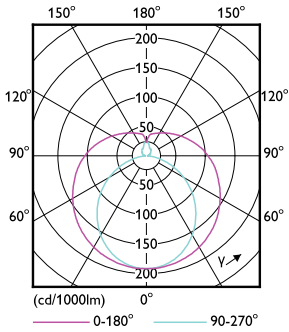
Dimensional drawing



Product	D1	D2	A1	A2	A3
MAS LEDtube 600mm HE 8W 830 T5 EU	15.7 mm	19 mm	549 mm	556.1 mm	563.2 mm

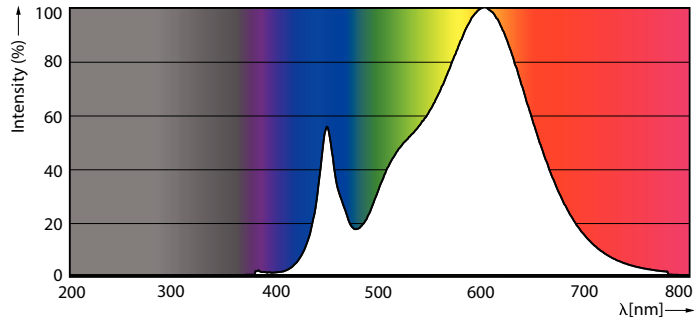
MASTER LEDtube Mains T5

Photometric data



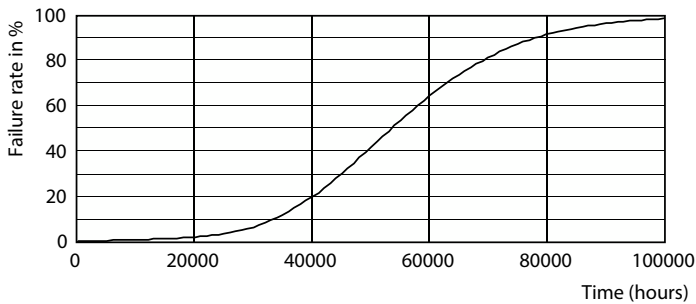
Light Distribution Diagram - MAS LEDtube 600mm HE 8W 830 T5 EU

General uniform lighting - MAS LEDtube 600mm HE 8W 830 T5 EU

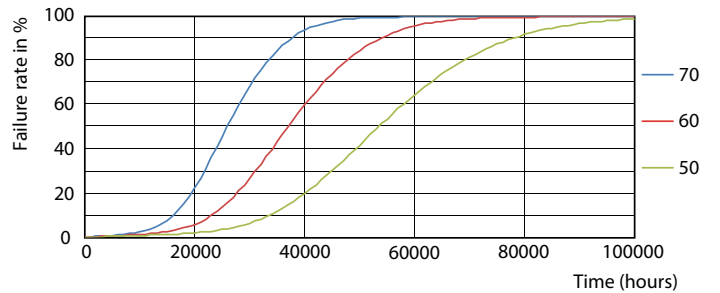


Spectral Power Distribution Colour - MAS LEDtube 600mm HE 8W 830 T5 EU

Lifetime



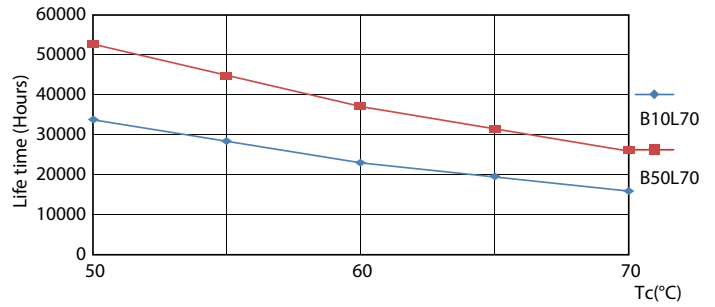
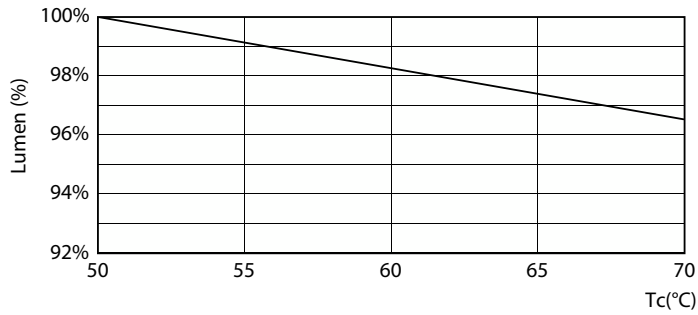
Life Expectancy Diagram - MAS LEDtube 600mm HE 8W 830 T5 EU



Life Expectancy Diagram - MAS LEDtube 600mm HE 8W 830 T5 EU

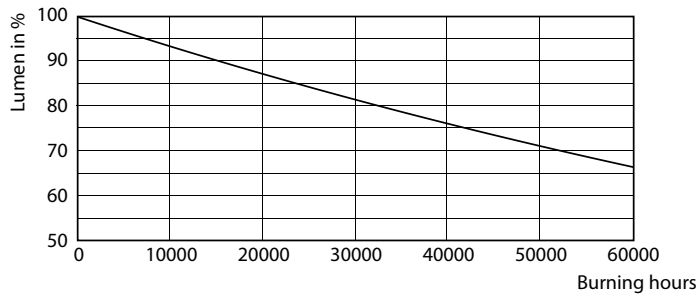
MASTER LEDtube Mains T5

Lifetime



Lumen Maintenance Diagram - MAS LEDtube 600mm HE 8W 830 T5 EU

Life Expectancy Diagram - MAS LEDtube 600mm HE 8W 830 T5 EU



Lumen Maintenance Diagram - MAS LEDtube 600mm HE 8W 830 T5 EU

