



# CorePro LEDtube EM/ Mains



## CorePro LEDtube 1500mm 20W 865 T8

The CorePro LEDtube is an affordable LED solution suitable for replacing T8 fluorescent lamps. The product provides a natural lighting effect for use in general lighting applications, as well as instant energy savings – an environmentally friendly solution.

### Warnings and Safety

• -

### Product data

General Information	
Cap base	G13 [Medium Bi-Pin Fluorescent]
Nominal lifetime	50,000 h
Switching Cycle	200,000
Lighting Technology	LED
Flux measurement reference	Sphere
CE mark	Yes
EU RoHS compliant	Yes
Light Technical	
Colour Code	865 [CCT of 6500K]
Beam angle (nom.)	240 degree(s)
Luminous Flux	2,200 lm
Colour designation	Cool Daylight
Correlated Colour Temperature	6500 K
Luminous efficacy (rated) (nom.)	110 lm/W
Colour consistency	<6
Colour rendering index (CRI)	80

LLMF at end of nominal lifetime (nom.)	70 %
Flickering value (PstLM)	1
Stroboscopic effect	0.9
Photobiological safety according to EN 62471	RG0
Operating and Electrical	
Line Frequency	50 to 60 Hz
Input frequency	50 to 60 Hz
Power Consumption	20 W
Lamp current (nom.)	105 mA
Starting time (nom.)	0.5 s
Warm-up time to 60% light	0.5 s
Power Factor (Fraction)	0.9
Voltage (nom.)	220-240 V
LED alternative to fluorescent lamp power	58 W
Inrush current at mains	8.7
Max. lamp no. on MCB B type 10A – Mains	34

## CorePro LEDtube EM/Mains

Max. lamp no. on MCB B type 10A — EM ballast without Comp. Cap.	54
Max. lamp no. on MCB B type 10A — EM ballast with Comp. Cap.	10
Max. lamp no. on MCB B type 16A — Mains	55
Max. lamp no. on MCB B type 16A — EM ballast without Comp. Cap.	87
Max. lamp no. on MCB B type 16A — EM ballast with Comp. Cap.	17
Ballast Compatibility	EM/Mains

### Temperature

Ambient temperature range	-20°C to 45°C
T-Case maximum (nom.)	60 °C

### Controls and Dimming

Dimmable	No
----------	----

### Mechanical and Housing

Lamp Finish	Frosted
Bulb material	Glass
Product length	1,500 mm
Bulb shape	T8

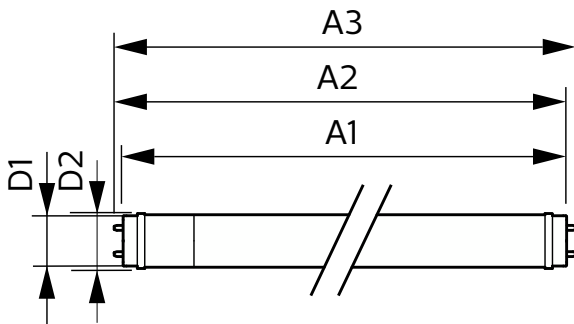
### Approval and Application

Energy Efficiency Class	E
Energy-saving product	Yes
Approval marks	RoHS compliance CE marking KEMA Keur certificate
Energy consumption kWh/1,000 hours	20 kWh
EPREL registration number	1384718

### Product Data

Order product name	CorePro LEDtube 1500mm 20W 865 T8
Full product name	CorePro LEDtube 1500mm 20W 865 T8
Full EOC	871951432541800
Order code	32541800
Material no. (12 NC)	929003022602
SAP numerator – quantity per pack	1
EAN/UPC – Product/Case	8719514325418
Numerator – packs per outer box	10
EAN/UPC - Case	8719514325425

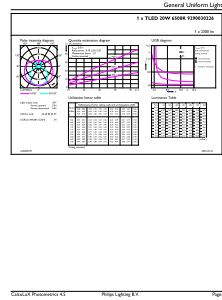
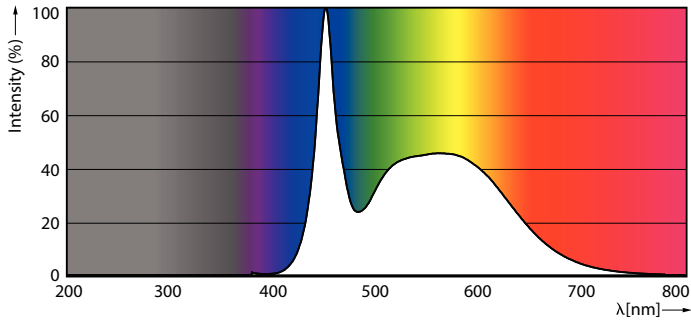
### Dimensional drawing



Product	D1	D2	A1	A2	A3
CorePro LEDtube 1500mm 20W 865 T8	25.7 mm	28 mm	1,500 mm	1,507.1 mm	1,514.2 mm

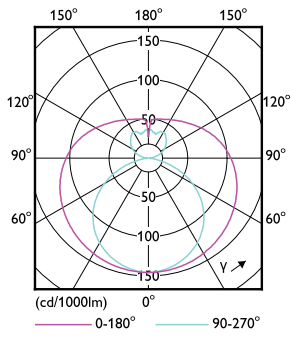
# CorePro LEDtube EM/Mains

## Photometric data



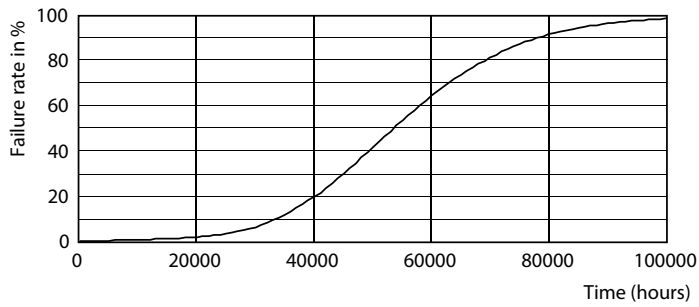
Spectral Power Distribution Colour - CorePro LEDtube 1500mm 20W 865 T8

General uniform lighting - CorePro LEDtube 1500mm 20W 865 T8

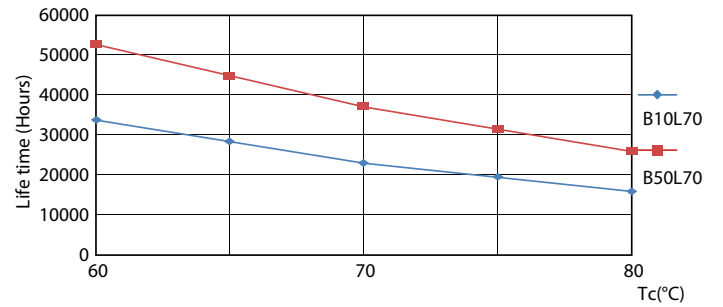


Light Distribution Diagram - CorePro LEDtube 1500mm 20W 865 T8

## Lifetime



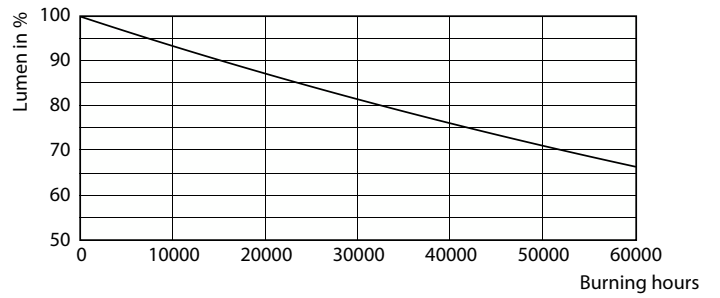
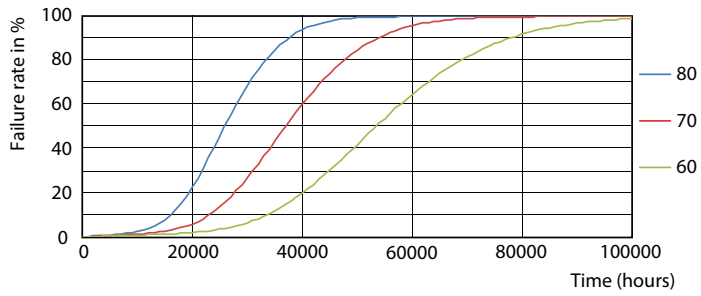
Life Expectancy Diagram - CorePro LEDtube 1500mm 20W 865 T8



Life Expectancy Diagram - CorePro LEDtube 1500mm 20W 865 T8

# CorePro LEDtube EM/Mains

## Lifetime



Life Expectancy Diagram - CorePro LEDtube 1500mm 20W 865 T8

Lumen Maintenance Diagram - CorePro LEDtube 1500mm 20W 865 T8

