



# MASTER LEDtube EM/ Mains T8



## MAS LEDtube 1500mm UO 21.7W 840 T8

The Philips MASTER LEDtube integrates a LED light source into a traditional fluorescent form factor. Its unique design creates a perfectly uniform visual appearance, which cannot be distinguished from traditional fluorescent. These T8 LED tubes are the right choice for absolute performance and are designed to stand up to everyday conditions. Unparalleled savings thanks to low energy consumption and an exceptionally long lifetime ensure this tube masters every demanding application.

### Warnings and Safety

- NOTE: The overall energy efficiency and light distribution of any installation that uses these lamps will be determined by the design of the installation.

### Product data

General Information		Correlated Color Temperature (Nom)	
Cap-Base	G13 ROT		4000 K
Nominal lifetime	75,000 hour(s)	Luminous Efficacy (rated) (Nom)	170 lm/W
Switching Cycle	200,000	Color Consistency	<6
Lighting Technology	LED	Color rendering index (CRI)	80
Flux measurement reference	Sphere	LLMF At End Of Nominal Lifetime (Nom)	70 %
CE mark	Yes	Flickering value (PstLM) - Flickering value as per EN 61000-3-3	0.5
EU RoHS compliant	Yes	Stroboscopic effect visibility measure (SVM)	0.2
		Photobiological safety according to EN 62471	RGO
Light Technical		Operating and Electrical	
Color Code	840 [CCT of 4000K]	Line Frequency	50 to 60 Hz
Beam Angle (Nom)	160 degree(s)	Input Frequency	50 to 60 Hz
Luminous Flux	3,700 lm	Power Consumption	21.7 W
Color Designation	Cool White (CW)		

# MASTER LEDtube EM/Mains T8

Lamp Current (Max)	108 mA
Lamp Current (Min)	89 mA
Starting Time (Nom)	0.5 s
Warm-up time to 60% light	0.5 s
Power Factor (Fraction)	0.9
Voltage (Nom)	220-240 V
LED alternative to fluorescent lamp power	58 W
Inrush current at mains	8.4
Max. lamp no. on MCB B type 10A - Mains	70
Max. lamp no. on MCB B type 10A – EM ballast without Comp. Cap.	70
Max. lamp no. on MCB B type 10A – EM ballast with Comp. Cap.	10
Max. lamp no. on MCB B type 16A - Mains	110
Max. lamp no. on MCB B type 16A – EM ballast without Comp. Cap.	110
Max. lamp no. on MCB B type 16A – EM ballast with Comp. Cap.	16
Ballast Compatibility	EM/Mains

## Temperature

Ambient temperature range	-20 °C to 45 °C
T-Case Maximum (Nom)	60 °C

## Controls and Dimming

Dimmable	No
----------	----

## Mechanical and Housing

Bulb Finish	Frosted
-------------	---------

Bulb Material	Plastic
Product Length	1,500 mm
Bulb Shape	T8

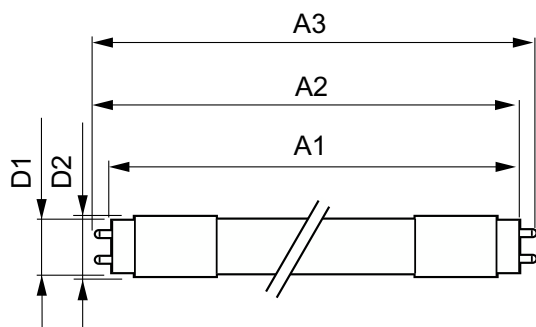
## Approval and Application

Energy Efficiency Class	C
Energy Saving Product	Yes
Approval Marks	RoHS compliance TUV CE marking KEMA Keur certificate
Energy Consumption kWh/1000 h	22 kWh
EPREL Registration Number	1206977

## Product Data

Order product name	MAS LEDtube 1500mm UO 21.7W 840 T8
Full product name	MAS LEDtube 1500mm UO 21.7W 840 T8
Full product code	871951431664500
Order code	929002998602
Material Nr. (12NC)	929002998602
Numerator - Quantity Per Pack	1
EAN/UPC - Product/Case	8719514316645
Numerator - Packs per outer box	10
EAN/UPC - Case	8719514316652

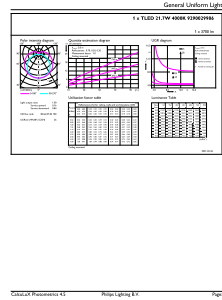
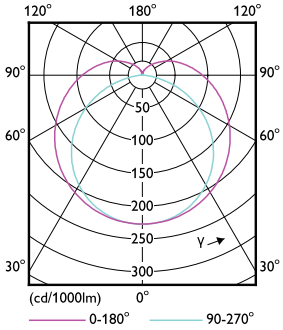
## Dimensional drawing



Product	D1	D2	A1	A2	A3
MAS LEDtube 1500mm UO 21.7W 840 T8	25.8 mm	28 mm	1,498.8 mm	1,505.9 mm	1,513 mm

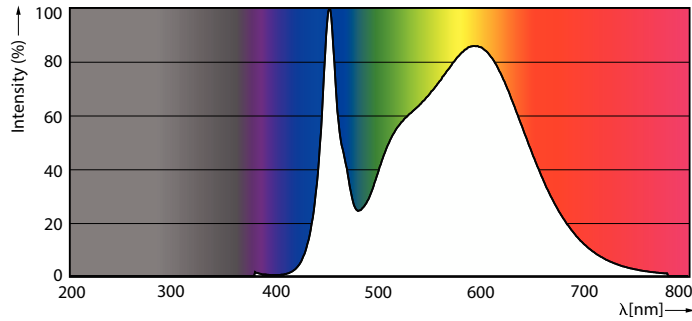
# MASTER LEDtube EM/Mains T8

## Photometric data



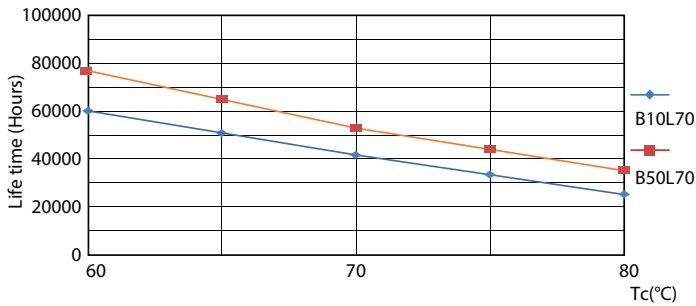
Light Distribution Diagram - MAS LEDtube 1500mm UO 21.7W 840 T8

General uniform lighting - MAS LEDtube 1500mm UO 21.7W 840 T8

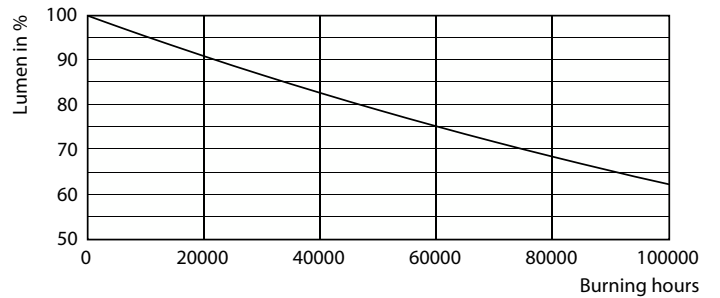


Spectral Power Distribution Colour - MAS LEDtube 1500mm UO 21.7W 840 T8

## Lifetime



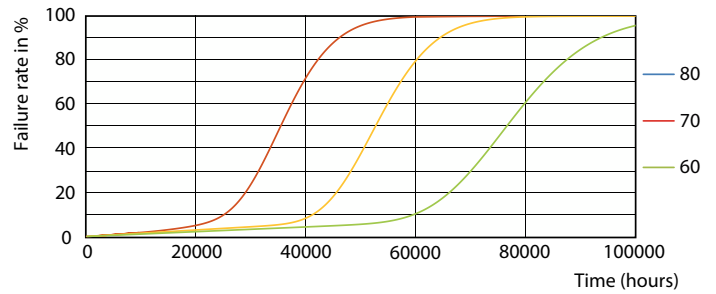
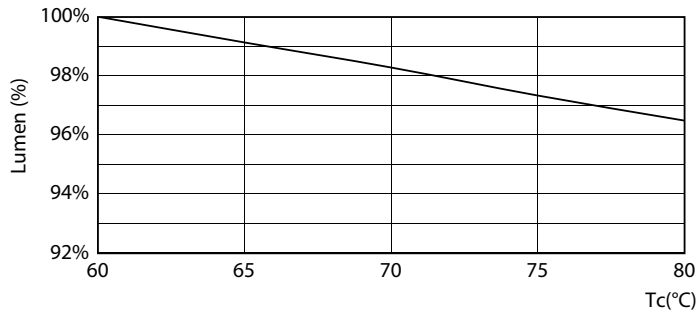
Life Expectancy Diagram - MAS LEDtube 1500mm UO 21.7W 840 T8



Lumen Maintenance Diagram - MAS LEDtube 1500mm UO 21.7W 840 T8

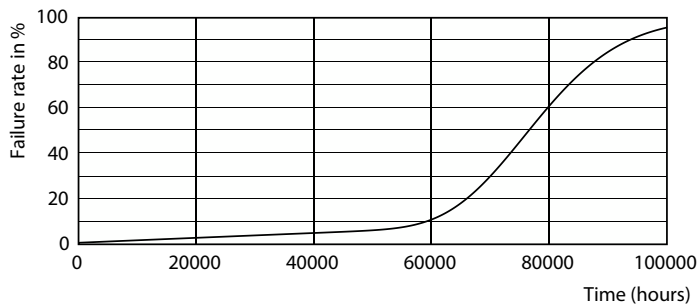
# MASTER LEDtube EM/Mains T8

## Lifetime



Lumen Maintenance Diagram - MAS LEDtube 1500mm UO 21.7W 840 T8

Life Expectancy Diagram - MAS LEDtube 1500mm UO 21.7W 840 T8



Life Expectancy Diagram - MAS LEDtube 1500mm UO 21.7W 840 T8

