



# CoreLine Projector gen2

## ST151T LED30S/930 MB WH

25 degree(s), 930 warm white, Power supply unit (On/Off), White

The well-known CoreLine Projector with its latest generation has undergone important design and performance improvement, raising the bar even higher and setting a new standard for track projectors used in retail and hospitality applications.

### Warnings and Safety

- The luminaire should be mounted outside of arm's reach
- The luminaire should be installed by a qualified electrician and wired in accordance with the latest IEE electrical regulations or the national requirements

### Product data

General Information	
Light source replaceable	No
Number of gear units	1 unit
Driver included	Yes
Lighting Technology	LED
Value ladder	Value
CE mark	Yes
Warranty period	5 years
Flammability mark	-
ENEC mark	ENEC mark
Glow-wire test	Temperature 650 °C, duration 30 s
EU RoHS compliant	Yes

Light Technical	
Luminous Flux	3,000 lm
Saturated Red (R9)	>50
Correlated Color Temperature (Nom)	3000 K
Luminous Efficacy (rated) (Nom)	100 lm/W
Color rendering index (CRI)	>90
Flickering value (PstLM) - Flickering value as per EN 61000-3-3	1
Stroboscopic effect visibility measure (SVM)	1.6
Beam angle of light source	25 degree(s)
Light source color	930 warm white
Optic type	Medium beam
Luminaire light beam spread	25°

# CoreLine Projector gen2

Unified glare rating CEN	19
<b>Operating and Electrical</b>	
Input Voltage	220 to 240 V
Line Frequency	50 or 60 Hz
Initial CLO power consumption	30 W
Average CLO power consumption	30 W
Inrush current	43.8 A
Inrush time	0.0115 ms
Power Consumption	30 W
Power Factor (Fraction)	0.9
Connection	3C Track
Cable	-
Number of products on MCB of 16 A type B	30

<b>Temperature</b>	
Ambient temperature range	-20 to +40 °C

<b>Controls and Dimming</b>	
Dimmable	No
Driver/power unit/transformer	Power supply unit (On/Off)
Constant light output	No

<b>Mechanical and Housing</b>	
Housing Material	Aluminum
Reflector material	-
Optic material	Polycarbonate
Optical cover material	Polycarbonate
Fixation material	-
Housing Color	White
Optical cover finish	-
Overall length	207 mm
Overall width	87 mm
Overall height	125 mm
Overall diameter	80 mm
Dimensions (Height x Width x Depth)	125 x 87 x 207 mm

<b>Approval and Application</b>	
Ingress protection code	IP20 [Finger-protected]
Mech. impact protection code	IK03 [0.3 J]
Sustainability rating	-
Protection class IEC	Safety class I
Photobiological risk	Photobiological risk group 0 @200mm to EN62778
Photobiological risk specification	0.2 m

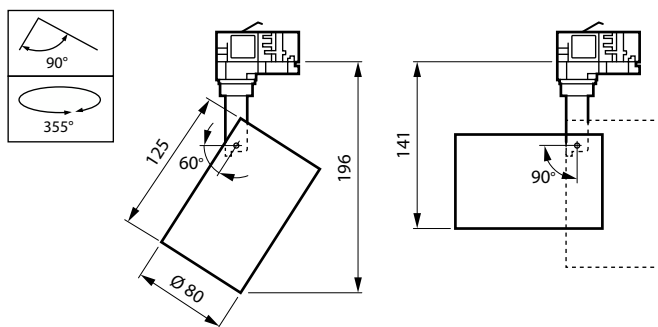
<b>Initial Performance (IEC Compliant)</b>	
Luminous flux tolerance	+/-10%
Initial chromaticity	(0.4355, 0.4045) SDCM <4
Power consumption tolerance	+/-10%

<b>Over Time Performance (IEC Compliant)</b>	
Control gear failure rate at median useful life	0.05 %
50000 h	
Lumen maintenance at median useful life*	L70
50000 h	

<b>Application Conditions</b>	
Performance ambient temperature Tq	25 °C
Maximum dim level	Not applicable
Suitable for random switching	No

<b>Product Data</b>	
Order product name	ST151T LED30S/930 MB WH
Full product name	ST151T LED30S/930 MB WH
Full product code	871951452857499
Order code	911401846782
Material Nr. (12NC)	911401846782
Numerator - Quantity Per Pack	1
EAN/UPC - Product/Case	8719514528574
Numerator - Packs per outer box	10
EAN/UPC - Case	8719514528659

## Dimensional drawing



## CoreLine Projector gen2

