



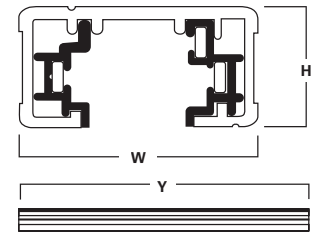
**SINGLE CIRCUIT TRACK**

**FEATURES**

- Miniature track provides versatility for every lighting need
- Miniature track is only 11/16" (17.5mm) deep by 1-3/8" (35mm) wide
- Connectors simply push into the ends of the track eliminating splicing
- Entire track system is fully polarized and grounded
- Channel is extruded aluminum with .060" nominal wall thickness
- Solid copper buss bars encased in rigid extruded PVC insulators
- Polarized connectors and end caps are molded polycarbonate
- Electrical capacity is 20 Amps
- Finishes: White (P) and Black (MB)

Compliances may not apply to all product configurations. Please consult the product spec sheet for compliance details.

**COMPLIANCES:** UL/cUL Listed, CSA Listed



	L	W	H
<b>L650</b> 2' Nominal	20-1/8" [511mm]	1-3/8" [35mm]	11/16" [18mm]
<b>L651</b> 4' Nominal	44-1/8" [1121mm]	1-3/8" [35mm]	11/16" [18mm]
<b>L652</b> 8' Nominal	92-1/8" [2340mm]	1-3/8" [35mm]	11/16" [18mm]
<b>L653</b> 12' Nominal	140-1/8" [3559mm]	1-3/8" [35mm]	11/16" [18mm]

**ORDERING INFORMATION**

**SAMPLE NUMBER:** L651MB

Track	Finishes	Connectors (Order Separately)	Accessories (Order Separately)	Current Limiters (Order Separately)
<b>L650</b> =2' Miniature Single Circuit Track System <b>L651</b> =4' Miniature Single Circuit Track System <b>L652</b> =8' Miniature Single Circuit Track System <b>L653</b> =12' Miniature Single Circuit Track System	<b>MB</b> =Black <b>P</b> =White	<b>DE600</b> =Dead End <b>L900</b> =Outbox Box Cover <b>L901</b> =Live End Connector <b>L902</b> =Flexible Connector <b>L903</b> =Straight Connector <b>L904</b> ="L" Connector <b>L905</b> ="T" Connector <b>L906</b> ="X" Connector <b>L907</b> =Outlet Box for Use with T-Bar Ceiling <b>L908</b> =Mini Joiner <b>L909</b> =Floating Canopy Connector <b>L950</b> =Cord and Plug Connector <b>L979</b> =Conduit Continuation Kit <b>L980</b> =Live End Conduit Adapter  <b>Finishes</b> <b>MB</b> =Black <b>P</b> =White	<b>L48</b> =48" Steel Stem <b>L951</b> =Wire Way Cover for Pendant Assembly Kit <b>L983</b> =T-Bar Attachment Clip <b>L992</b> =Pendant Kit assembly <b>L994</b> =Pendant Adapter  <b>Finishes</b> <b>MB</b> =Black <b>P</b> =White	<b>Current Limiter-Center Feed</b> <b>LC903CB120</b> =120W (1A @ 120V) <b>LC903CB1200</b> =1200W (10A @ 120V) <b>LC903CB300</b> =300W (2.5A @ 120V) <b>LC903CB600</b> =600W (5A @ 120V) <b>LC903CB960</b> =960W (8A @ 120V)  <b>Current Limiter-End Feed</b> <b>LC901CB120</b> =120W (1A @ 120V) <b>LC901CB1200</b> =1200W (10A @ 120V) <b>LC901CB300</b> =300W (2.5A @ 120V) <b>LC901CB600</b> =600W (5A @ 120V) <b>LC901CB960</b> =960W (8A @ 120V)  <b>Finishes</b> <b>MB</b> =Black <b>P</b> =White

**CONNECTORS AND ACCESSORIES**



L900 Outlet Box Cover



L901 Live End Connector



L902 Flexible Connector



L903 Straight Connector



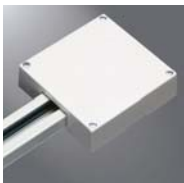
L904 L Connector



L905 T Connector



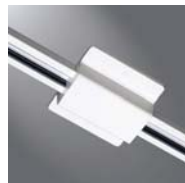
L906 X Connector



L907 Outlet Box for use with T-Bar Ceiling



L908 Mini Joiner



L909 Floating Canopy and Connector



L950 Cord and Plug Connector



L951 Wire Way Cover for Pendant Assembly Kit



L979 Conduit Continuation Kit



L980 Live End Conduit Adapter



L983 T-Bar Attachment Clip



L992 Pendant Kit Assembly



L994 45° Pendant Adapter



DE600 Dead End



LC901 Current Limiter

Specifications and dimensions subject to change without notice. Consult your Cooper Lighting Solutions Representative or visit [www.cooperlighting.com](http://www.cooperlighting.com) for available options, accessories and ordering information.