

DESCRIPTION

H36RTAT is a Non-IC AIR-TITE™ remodel fixture for use with H3 3" series trims. For installation from below the ceiling. Housing is AIR-TITE rated to prevent airflow between heated or air conditioned spaces and unconditioned attic areas. For use with 120V GU10 lamps.

Non-IC Housing is AIR-TITE™ but insulation must be kept 3" away from all sides of housing.

Catalog #		Type
Project		
Comments		Date
Prepared by		

SPECIFICATION FEATURES

Housing

Formed of 20 gauge CRS with white powder coat finish.

Remodel Plaster Frame

"Easy clip" provided to secure plaster frame in ceiling while installation is being completed. Adjustable cam-locks provide positive lock of housing to plaster frame to complete housing installation.

Junction Box

- UL Listed for through branch circuit wiring (maximum 8 No.12 ga., 90°C conductors).
- Four 1/2" trade size conduit knockouts with true pry-out slots.

- Three Slide-N-Side™ wire traps allow non-metallic sheathed cable to be installed without tools and without removing knockouts. Accepts a wide range of non-metallic sheathed cable.
- Allows wiring connections to be made outside the junction box.
- Simply insert the cable directly into the trap after connections are made.
- Three push-in wire connectors are included and eliminate the need for separate wire nuts.
- Accommodates the following standard non-metallic sheathed cable sizes: (US) #14/2, #14/3, #12/2, #12/3

(Canada) #14/2, #14/3, #12/2

- No-accessible ceiling installation requires nonmetallic "NM" sheathed cable connection.

Socket

GU10 socket for 120V GU10 lamps.

Labels

- UL/cUL Listed 1598 Luminaire
- UL/cUL Damp Location Listed
- UL/cUL Listed for Feed Through
- Certified Under ASTM-E283 for air tight construction



H36RTAT

**3" Non-Insulated Ceiling
AIR-TITE™ Recessed Housing
120V GU10**

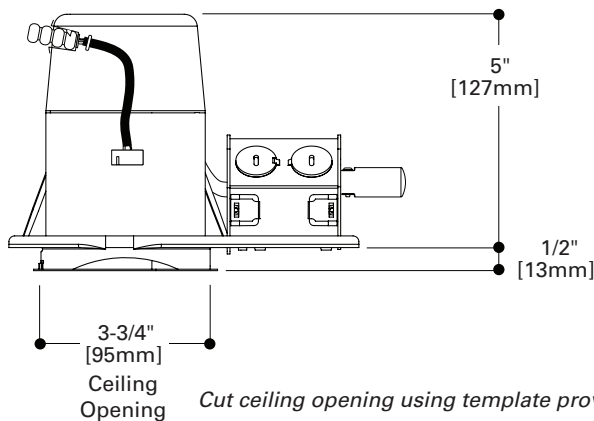
3" TRIMS

FOR USE IN NON-INSULATED CEILINGS

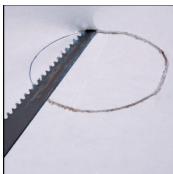
CAN BE USED IN INSULATED CEILINGS BUT INSULATION MUST BE KEPT 3" FROM ALL SIDES OF THE HOUSING



120V GU10



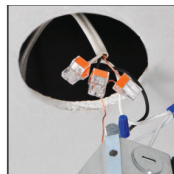
REMODEL HOUSING INSTALLATION



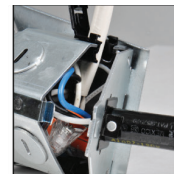
Cut hole in ceiling using template supplied.



Bring power to fixture using non metallic sheathed cable or flexible metal cable.



The Halo Slide-N-Side™ wire traps let you make all wiring connections outside the junction box.



Slide cable into Slide-N-Side™ wire trap and close junction box cover.



Insert plaster frame into ceiling opening.



Support clip keeps plaster frame in place during rest of installation.



Insert housing into position and align slots in housing wall with indicator label on inside of plaster frame opening. Then secure in position with cam locks.



Insert trim to complete installation.

ORDERING INFORMATION

SAMPLE NUMBER: H36RTAT-3001WHBB

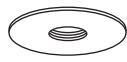
Order housing and trims separately.

Housing

Trims

H36RTAT

H36RTAT= 3" AIR-TITE™ Non-IC
Small Aperture Line
Voltage GU10
Remodel Housing



3001 Adjustable Pinhole Baffle - 15° Tilt
50W 120V GU10
3001WHBB=White with Black Baffle
3001BKBB=Black with Black Baffle
3001SNBB=Satin Nickel with Black Baffle
3001TBZBB=Tuscan Bronze with Black Baffle
OD: 4-1/4" [108mm]



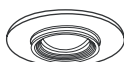
3009 Adjustable Gimbal- 35° Tilt
50W 120V GU10
3009WHBB=White with Black Baffle
3009WHWB=White with White Baffle
3009BKBB=Black with Black Baffle
3009SNBB=Satin Nickel with Black Baffle
3009TBZBB=Tuscan Bronze with Black Baffle
OD: 4-1/4" [108mm]



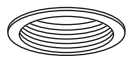
3020 Wall Wash
50W 120V GU10
3020WW=White Downlight & Wall Wash
with Integral Kick Reflector
OD: 4-1/4" [108mm]



3002 Adjustable Pinhole Reflector- 15° Tilt
50W 120V GU10
3002WHC=White with Clear Reflector
OD: 4-1/4" [108mm]



3010 Super Adjustable- 0 - 80° Adjustment
50W 120V GU10
3010WH=White
3010SN=Satin Nickel
3010TBZ=Tuscan Bronze
OD: 4-1/4" [108mm]



3003 Adjustable Baffle- 35° Tilt
50W 120V GU10
3003WHBB=White with Black Baffle
3003WHWB=White with White Baffle
3003BKBB=Black with Black Baffle
3003SNB=Satin Nickel with Satin Nickel Baffle
3003TBZB=Tuscan Bronze with Tuscan Bronze Baffle
OD: 4-1/4" [108mm]



3011 Square Adjustable - 15° Tilt
50W 120V GU10
3011WHBB=White with Black Baffle
3011WHWB=White with White Baffle
3011BKBB=Black with Black Baffle
3011SNBB=Satin Nickel with Black Baffle
3011TBZBB=Tuscan Bronze with Black Baffle
OD: 4-1/4" [108mm]



3004 Adjustable Reflector- 35° Tilt
50W 120V GU10
3004WHC=White with Clear Reflector
3004SN=Satin Nickel with Satin Nickel Reflector
3004TBZ=Tuscan Bronze with Tuscan Bronze Reflector
3004WHH=White with Haze Reflector
3004WHW=White with White Reflector
OD: 4-1/4" [108mm]



3012 Square Regressed Lens Adjustable Showerlight - 15° Tilt
50W 120V GU10
3012WHBB=White with Black Baffle
3012WHWB=White with White Baffle
3012BKBB=Black with Black Baffle
3012SNBB=Satin Nickel with Black Baffle
3012TBZBB=Tuscan Bronze with Black Baffle
OD: 4-1/4" [108mm]



3006 Adjustable Slot Aperture- 35° Tilt
50W 120V GU10
3006WHBB=White with Black Baffle
3006BKBB=Black with Black Baffle
3006SNBB=Satin Nickel with Black Baffle
3006TBZBB=Tuscan Bronze with Black Baffle
OD: 4-1/4" [108mm]



3013 Square Adjustable Gimbal - 35° Tilt
50W 120V GU10
3013WH=White
3013BK=Black
3013SN=Satin Nickel
3013TBZ=Tuscan Bronze
OD: 4-1/4" [108mm]



3007 Regressed Lens Showerlight- 15° Tilt - Wet Location Listed
50W 120V GU10
3007WHC=White with Clear Reflector
3007PCC=Polished Chrome with Clear Reflector
3007SN=Satin Nickel with Satin Nickel Reflector
3007TBZ=Tuscan Bronze with Tuscan Bronze Reflector
OD: 4-1/4" [108mm]



3017 All-Glass Frost Curve Showerlight - Wet Location Listed
50W 120V GU10
3017FGS=All-Glass Frost Curve with Clear Glass Center - Showerlight
OD: 4-1/4" [108mm]



3008 Showerlight - Wet Location Listed
50W 120V GU10
3008FG=White Polymer and Glass Lens with Frosted Perimeter
OD: 4-1/4" [108mm]

Accessories

Lamp
Z28= GU10, 50W, 120V lamp