

Installation Guide

— TrueForce Core LED road lamp

Please take the time to read this installation guide. The guide contains important information and notes regarding the installation and operation.

IMPORTANT!

- Always switch off the power supply before commencing work!
- Please read the installation instructions carefully and follow the wiring instructions to ensure safety.
- The product is NOT dimmable.
- The product can be operated on Direct Mains or ElectroMagnetic (EM) gear without ignitor. Ignitor ALWAYS needs to be disconnected from the system.
- Recommended to remove capacitor to improve system power factor.
- The product is not compatible with electronic gear.
- Suitable for use in operating temperature range between -40°C to +45°C.
- Do not change the structure or any components of the product to ensure safety.
- The product is designed to fit in standard IEC compliant E27/E40 lamp holders.
- The product should be installed by qualified professional.
- Perform inspection before installation to ensure the luminaire and lamp holder are in good condition to carry the weight and performance of the product.
- Do not use in open luminaire.
- *The product fulfills IP65 requirements except lamp cap, outdoor applications require the lamp to be used in luminaires with suitable IP rating.
- Please do not apply the product in applications which contains emergency or/and explosive proof luminaires.
- The total system performance may vary depending on the lighting/luminaire system.
- For latest information, please refer to www.philips.com/lighting.
- In case of doubt, please consult Philips representative.

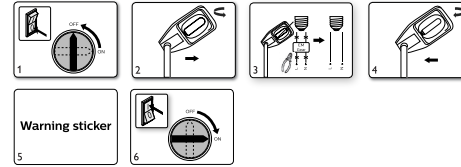
DISCLAIMER:
Signify disclaims liability for any direct, indirect or incidental damages in case of installation performed either not according to this guide or not performed by a professional electrician.

CE RoHS COMPLIANT IP65*

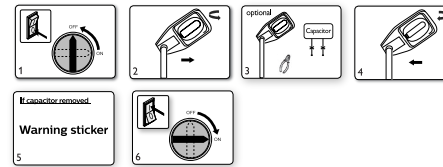
PHILIPS



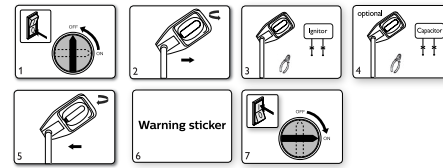
For replacing HPL/SON/Other Lamps, Convert to Direct Mains (Recommended)



For replacing HPL Lamps and keeping the EM ballast



For replacing SON Lamps and keeping the EM ballast

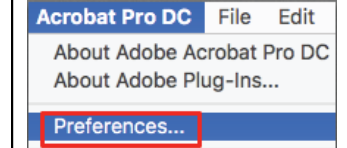


© 2021 Signify Holding
@Ignify
All rights reserved. Reproduction in whole or in part is prohibited without the prior written consent of the copyright owner.
The information presented in this document does not form part of any quotation or contract, is believed to be accurate and reliable and may be changed without notice. No liability will be accepted by the publisher for any consequence of its use. Publication thereof does not convey nor imply any license under patent or other industrial or intellectual property rights.
04/2021
www.philips.com/lighting 3241 658 24591

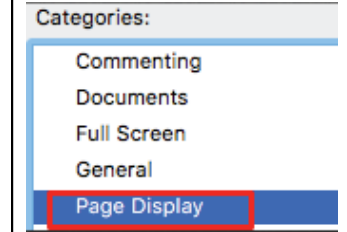
SIGNIFY	
Brand	Philips
Product Family	LEDtube
Shape	
Wattage	
Template Ref.	NA
SGS number	6371919
12-NC.NBR	324165824591
Masterdrawing NA	
CRC Ref.	CRC000
Barcode No.	NA
Operator(s)	pollypan
VERSION No.	v1
Date in	20150514
Date amended	20210415
Black	Diecut
Date Check <input type="checkbox"/> Check briefing Traffic	
Artwork document <input type="checkbox"/> Legend <input type="checkbox"/> Number of colors <input type="checkbox"/> 12NC <input type="checkbox"/> Trapping/Bleed <input type="checkbox"/> Barcode <input type="checkbox"/> Images hires <input type="checkbox"/> Diecut <input type="checkbox"/> Jobsizes	
Approval	
<input type="checkbox"/> QC Lithographer	SGS Shanghai Production
<input type="checkbox"/> Product Manager	yi.y.zhu@signify.com
<input type="checkbox"/> Traffic Manager	Joanna Wu

Acrobat PDF
View Setting
确保PDF显示正确, 请按
以下设定叠印预览:

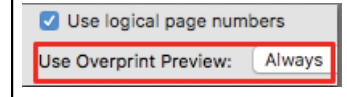
Step 1



Step 2



Step 3



Document Info	Code 12NC:	Designer:	Duplexbox:	Author	Date	Change number	Revision description
	324165824591	Design date: 2021-04-22	324165824591	SH SGS	2021/04/22		
	Description: TrueForce SON-T EU		EAN1 number: NA				
			Die-Cut: NA				
			Surface treatment: N/A				
			CRC: CRC000				