

DESCRIPTION

Gimbal Ring style lampholder designed for simplicity of form and minimal presence accommodates up to 50W Low Voltage MR16 lamps. Must be used with L2001 electronic power supply (order separately). Compatible with Halo and Lazer-by-Halo track systems (not for use with 4-Circuit track)

| | |
|-------------|------|
| Catalog # | Type |
| Project | |
| Comments | |
| Prepared by | Date |

SPECIFICATION FEATURES

A...Electrical Quick Lock Adapter

Polycarbonate casing. Attaches electrically and mechanically to L2001 power supply. Visual polarity line assures proper electrical connections.

B...Yoke

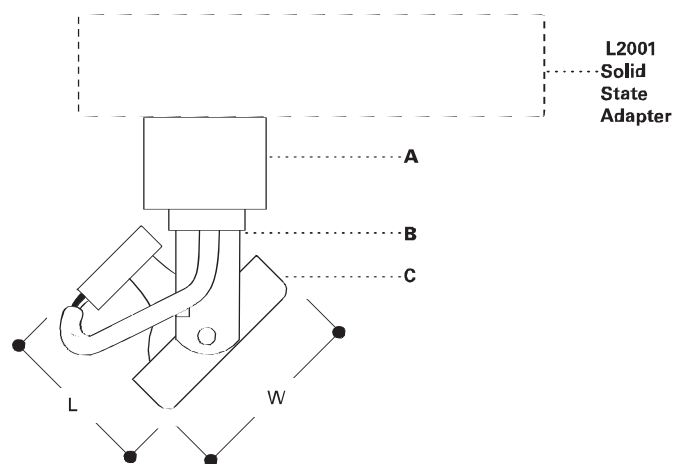
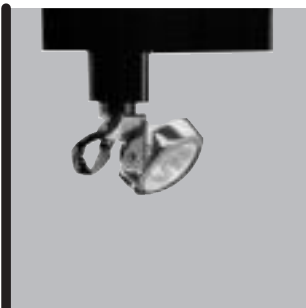
Yoke allows lampholder to rotate 338° horizontally and adjust vertically from 0° to 90° for maximum aiming adjustability.

C...Gimbal Ring

Die formed gimbal ring contains lamp retention clip. Gimbal ring will accept a single glass lens or filter. Cover glass (required) is supplied with the fixture.

Listings

UL listed and CSA Certified for use with Halo nad Lazer-by-Halo track and Halo track systems



L2716

50W 12V
MR16

LOW VOLTAGE
GIMBAL RING
LAMPHOLDER

POWER-TRAC

ORDERING INFORMATION

SAMPLE NUMBER: L2716P

Lampholders

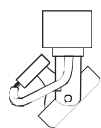
L2716

Finishes

P=Satin White
B=Polished Brass
MB=Black

Accessories

L1960=Barn Doors
L100=Series Color Filters/ Lenses
L200=Baffle
L1955=Concentrator



L2716

NOTE: REQUIRES L2001 TRANSFORMER FOR OPERATION
NOTE: NOT FOR USE WITH 4-CIRCUIT TRACK

For use with: 50W 12V MR16

L =1 7/8" [48mm]
W=2 1/8" [54mm]
E=2 5/8" [67mm]

Accessories

L1960 Barn Doors
L100 Series Color Filters/ Lenses
L200 Baffle
L1955 Concentrator

ADV990398

ACCESSORIES

L100 Series Optical Lenses

L110N=Diffuse Sandblasted Lens

Provides an even beam spread from MR16 lamps - especially useful in wall washing

L111=Soft Focus Lens

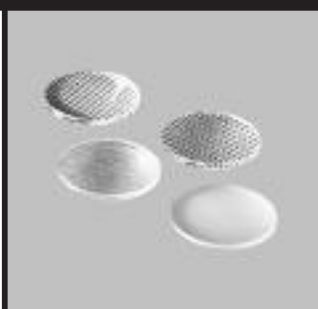
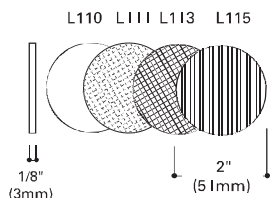
Smooths irregular beam pattern while maintaining high controlled illumination levels and beam angles of MR16 lamps

L113=Prismatic Spread Lens

Provides a symmetrical broadening of MR16 lamp beams. Suitable when a wide, uniform light distribution is required.

L115=Linear Spread Lens

Fans out the MR16 beam 55° (27 1/2° to each side) to produce a wide rectangular pattern



L100 SERIES LENSES

2" UV AND COLOR FILTERS

For use with MR 16 Lampholders. Provides either a soft or intense hue to accent a lighting installation. Replaces the glass shield provided with the lampholder

L112=Red gel filter

L114=Ultraviolet dichroic filter

L120=Red dichroic filter

L121=Amber dichroic filter

L122=Yellow dichroic filter

L123=Green dichroic filter

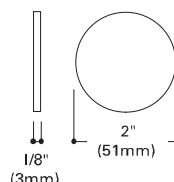
L124=Daylight blue dichroic Filter

L125=Blue dichroic Filter

L127=Cosmetic (2700°K) dichroic filter

L130=Yellow Gel Filter

L131=Amber Gel Filter

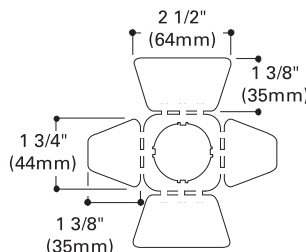


COLOR FILTERS

Barn Door Shutters

L1960=Barn Door Shutters for L2716. Barn door is designed to clip onto lampholder- no additional clips are required.

Color Code: MB

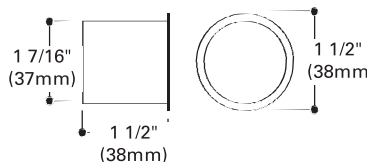


BARN DOOR SHUTTERS

Accessory Baffle

L200=Reduces glare and spill light

Color Code: MB



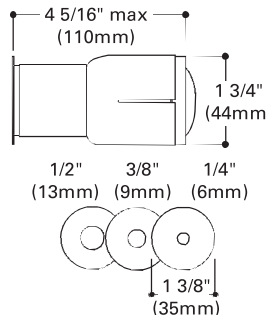
BAFFLE

Beam concentrator

L1955=Concentrates beam of MR16FL lamp to produce a well defined round spot of light.

Comes with three auxiliary round beam templates for choice of beam angle size

Color Code: MB



BEAM CONCENTRATOR

Note: Specifications and Dimensions subject to change without notice.