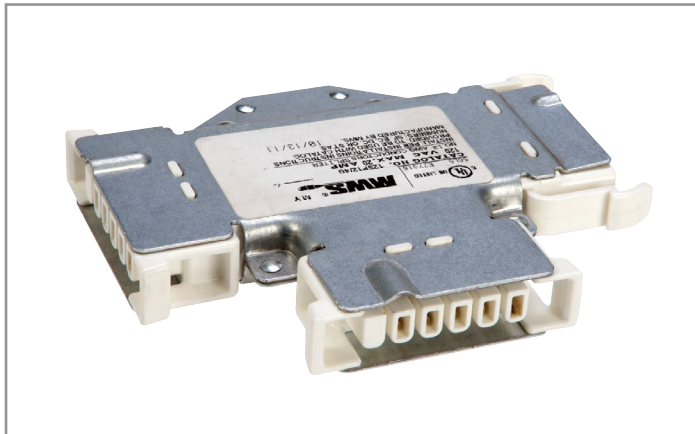


Project		Catalog #		Type	
Prepared by		Notes		Date	




MWS

CT


Circuit T Modular Wiring System

Typical Applications

Office • Education • Healthcare • Hospitality • Retail • Industrial • Manufacturing • Sports Venues

 **Interactive Menu**

- Order Information page 2
- Product Specifications page 2
- System View page 2
- Product Warranty

 **CLICK HERE**

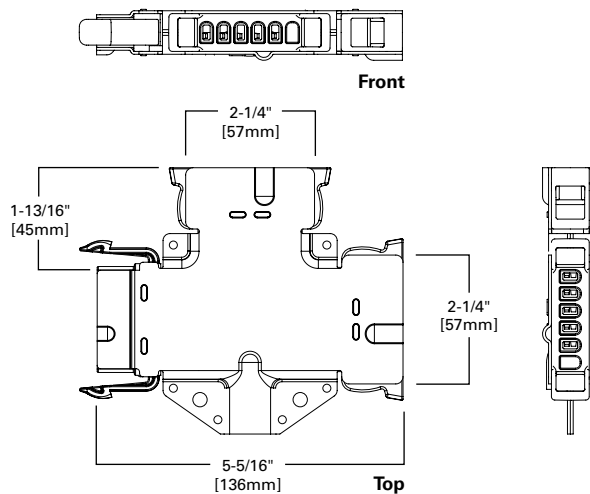
Product Certification



Top Product Features

- UL Listed under Standard 183 for make or break under load
- Meets requirements of Article 604 of the National Electrical Code
- Rated at 20 amperes with full-size ground wire
- Copper conductors with THHN insulation rated at 90°C
- Galvanized steel exterior with integral keying for voltage

Dimensional and Mounting Details



 additional product diagrams

Order Information

SAMPLE ORDER NUMBER: 27CT12/4GBK

Voltage	Component	Conductors and Size	Wiring	Options
12=120V 20=208V 24=240V 27=277V 34=347V 48=480V	CT=Circuit T	10/4G=10 gauge, 5 wires through Black/White/Red/Blue/Green 12/4G=12 gauge, 5 wires through Black/White/Red/Blue/Green	120V/ 277V/ 347V BK=3 Circuits through + Ground + Neutral Black/White/Green Down BU=3 Circuits through + Ground + Neutral Blue/White/Green Down RD=3 Circuits through + Ground + Neutral Red/White/Green Down 208V/ 240V/ 480V BB=4 Hots + Ground through Black/Blue/Green Down BR=4 Hots + Ground through Black/Red/Green Down BY=4 Hots + Ground through Blue/Yellow/Green Down NB=5 wires through with Black, Ground and Neutral for the Black Wires Down NR=5 wires through with Red, Ground and Neutral for the Red Wires Down RB=4 Hots + Ground through Red/Blue/Green Down	2N=2 Neutral

Product Specifications

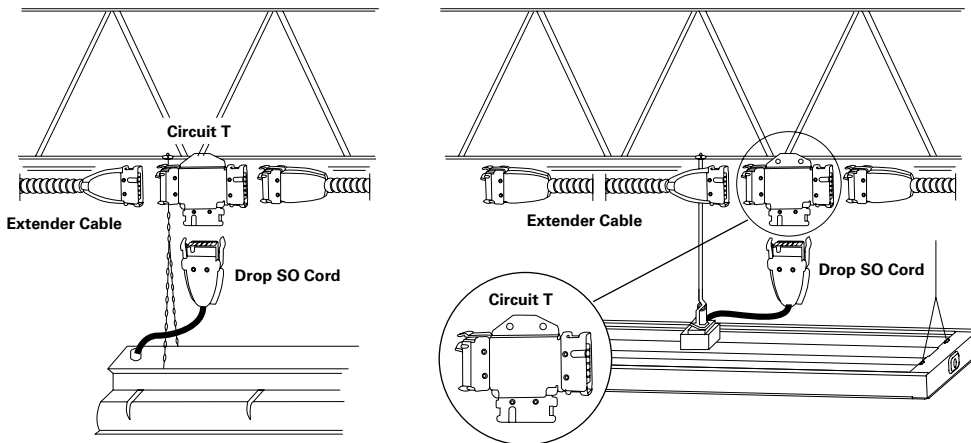
- UL Listed under Standard 183 for make or break under load
- MWS components assembled with 12 AWG/10 AWG conductors rated at 20 amperes with full size ground wire
- Copper conductors are THHN insulated wire rated 90°C
- Galvanized steel exterior with integral keying for voltage and amperage
- Feeds power to luminaires wired with Drop SO Cords (DC) or Cables (DC)
- Unique double-blade contact ensures proper mating of electrical components to prevent pushback or pullout

Catalog number description indicates circuit selection.

- BK**=Black or Hot #1
- RD**=Red or Hot #2
- BU**=Blue or Hot #3
- BR**=Hots #1 + #2
- RB**=Hots #2 + #3
- BB**=Hots #1 + #3
- BY**=Hots #3 + #4
- NB**=Neutral #1 + Hot #1
- NR**=Neutral #2 + Hot #2

All unused outlets require a MWS dust cover. MWS ST, SP, SD, CT and TC are shipped with one dust cover attached.

System View (not to scale)



Circuit T (CT)

Feeds power through and taps desired circuit to other fixtures.

Typical MWS Wiring System Application shown utilizing **Circuit T (CT)**.

Consult MWS Installation, Application and Specification Manual for additional comprehensive system information.

MWS Autocad Drafting

Please reach out to your local representative for MWS layout design assistance.

Shipping Data

Unit Wt.	Standard Qty./Carton
1.0 lbs.	24

All electrical boxes, conduit, connections and switches by others.
 Install dust covers on unused open ends.
 Scale is exaggerated on fixtures and MWS system applications.