



Installation Guide

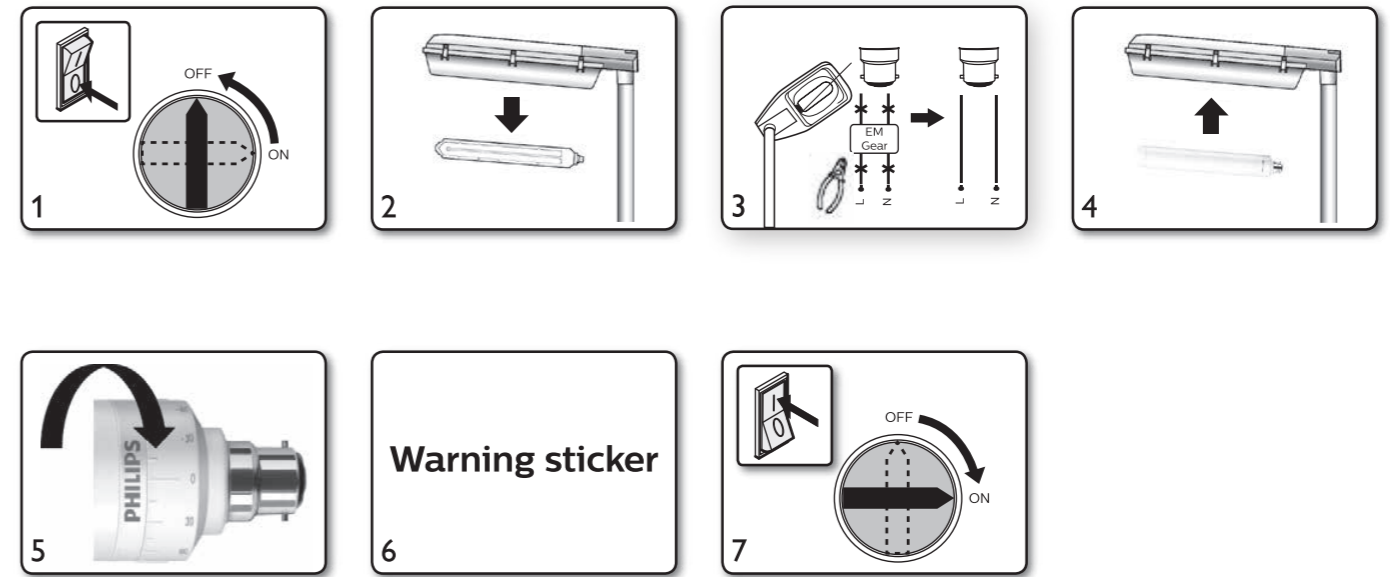
— Philips TrueForce LED lamps

Please take the time to read this installation guide. The guide contains important information and notes regarding the installation and operation.

IMPORTANT!

- Always switch off the power supply before commencing work!
- The product is not compatible to use with electromagnetic/electronic ballast.
- Please read the installation instructions carefully and follow the wiring instructions to ensure safety.
- The product is NOT dimmable.
- The product can be only operated on Direct Mains.
- Suitable for use in operating temperature range between -40°C to +55°C.
- Recommended to use in luminaire with IP ≥ IPX4 to ensure maximum product life.
- Do not change the structure or any components of the product to ensure safety.
- The product is designed to fit in standard IEC compliant B22-d/BY22-d lamp holders.
- The product should be installed by qualified professional installer.
- Perform inspection before installation to ensure the luminaire and lamp holder are in good condition to carry the weight and performance of the product.
- The product fulfilled IP60 requirement.
- Please do not apply the product in applications which contains emergency or/and explosive proof luminaires.
- The total system performance may vary depending on the lighting/luminaire system.
- For latest information, please refer to www.lighting.philips.com.
- In case of doubt, please consult Philips representative.

For replacing SOX, convert to direct mains



DISCLAIMER:

Signify disclaims liability for any direct, indirect or incidental damages in case of installation performed either not according to this guide or not performed by a professional electrician.

CE RoHS COMPLIANT IP60

PHILIPS



© 2021 Signify Holding
©ignify

Philips and the Philips Shield Emblem are registered trademarks of Koninklijke Philips N.V.

All rights reserved. Reproduction in whole or in part is prohibited without the prior written consent of the copyright owner. The information presented in this document does not form part of any quotation or contract, is believed to be accurate and reliable and may be changed without notice. No liability will be accepted by the publisher for any consequence of its use. Publication thereof does not convey nor imply any license under patent or other industrial or intellectual property rights.

01/2021
www.philips.com/lighting

3241 657 64391