



All-in-one Solar street light range up-to 18000 lumens, suitable for high ambient temperature applications

GreenVision All-in-one Solar Street Light

Integrated solar street light with Lithium Ferro Phosphate battery, solar panel and MPPT charge controller built into the luminaire. Pressure die cast aluminium for sturdiness and long life. Specially designed pole mounting bracket allows different tilt angles, lateral and pole top mounting. Adjustable LED module for better distribution of light when required.

Benefits

- Brings light to areas without access to electric grid
- Preserves landscape as no trenching for cabling required
- Sturdy construction
- Suitable for high ambient temperature operation
- Saves energy, environment friendly

GreenVision All-in-one Solar Street Light

Features

- High luminous efficacy of > 180 lm/Watt to maximize battery performance
- MPPT charge controller for maximum efficiency
- Specially designed pole mounting bracket with adjustable tilt angles, which can also be used in post top & lateral mounting positions
- 3G compliant pressure die-cast aluminum housing for sturdiness and excellent heat dissipation
- Factory set dimming profile along with microwave sensor for run time maximization. Dimming can be configured at site with the help of configuration remote controller.
- Self diagnostic feature with LED Indicators.

Application

- Road and streetlighting
- Perimeter lighting
- Parks, pedestrian paths, cycle tracks
- Shopping centers, plazas
- Industries, office and school campuses
- Sub-urban areas

Versions



GreenVision SolarAIO-BRP715 LED90

GreenVision SolarAIO-BRP715 LED50

GreenVision SolarAIO-BRP715 LED120

GreenVision SolarAIO-BRP715 LED180

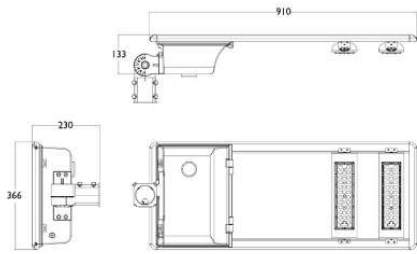


GreenVision SolarAIO-BRP715 LED70

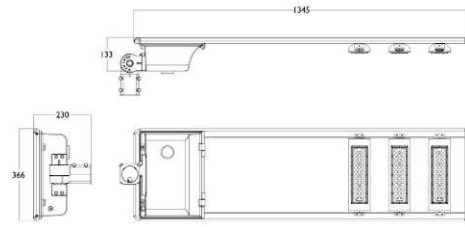
GreenVision All-in-one Solar Street Light

Dimensional drawing

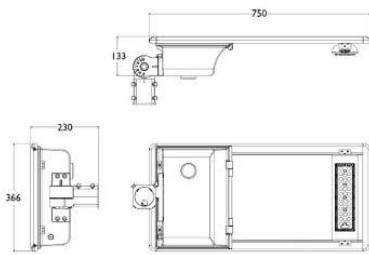
BRP715 LED90 CW Solar



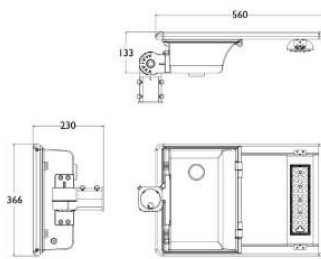
BRP715 LED180 CW Solar



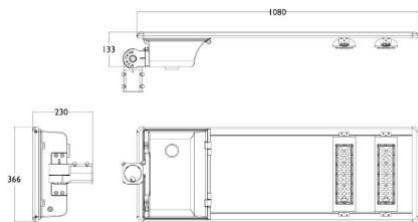
BRP715 LED70 CW Solar



BRP715 LED50 CW Solar



BRP715 LED120 CW Solar



GreenVision All-in-one Solar Street Light

Light Technical

Correlated Color Temperature (Nom)	5700 K
Color rendering index (CRI)	>70

Operating and Electrical

Battery charging & discharging cycles	2000
Battery type	Lithium Ferro Phosphate
Charge controller type	MPPT
Panel type	Mono crystalline

Temperature

Ambient temperature range	-20 to +55 °C
---------------------------	---------------

Controls and Dimming

Dimmable	Yes
Configurability	Configurable

Mechanical and Housing

Housing Color	Black
Overall height	133 mm
Overall width	366 mm

Approval and Application

Ingress protection code	IP65
-------------------------	------

Application Conditions

Ambient temperature range for charging	0 °C to +55 °C
Ambient temperature range for discharging (when light is on)	-20 °C to +55 °C
Battery location	Inbuilt
Grid connection type	Off grid
Solar dimming profile	Dimming along with microwave sensor

Operating and Electrical

Order Code	Full Product Name	Battery ampere	Panel peak		
		hour	Battery voltage	wattage	Panel voltage
911401625708	BRP715 LED90 CW Solar	24 Ah	12.8 V	50 W	18 V
911401625508	BRP715 LED50 CW Solar	12 Ah	12.8 V	25 W	18 V
911401625808	BRP715 LED120 CW Solar	30 Ah	12.8 V	60 W	18 V
911401625908	BRP715 LED180 CW Solar	24 Ah	25.6 V	80 W	36 V
911401625608	BRP715 LED70 CW Solar	18 Ah	12.8 V	40 W	18 V

Mechanical and Housing

Order Code	Full Product Name	Overall length
911401625708	BRP715 LED90 CW Solar	910 mm
911401625508	BRP715 LED50 CW Solar	560 mm
911401625808	BRP715 LED120 CW Solar	1,080 mm

Order Code	Full Product Name	Overall length
911401625908	BRP715 LED180 CW Solar	1,345 mm
911401625608	BRP715 LED70 CW Solar	750 mm

GreenVision All-in-one Solar Street Light

