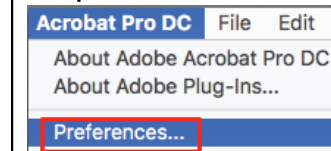


具体内容见以下页面

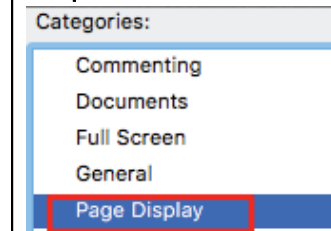
Document Info	Code 12NC:	Designer:	Basic Info	Duplexbox:	Author	Date	Change number	Revision description
		324165581822		SH SGS		324165581822	SH SGS	2020/10/16
	Description:	Design date:		EANI number:				
	TForce Core LED HPL E27 & E40 FR	2020-10-16		N/A				
				Die-Cut:				
				148x210mm				
				Surface treatment:				
				N/A				
				CRC:				
				CRC000				

Acrobat PDF
View Setting
确保PDF显示正确，请按
以下设定叠印预览：

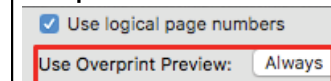
Step 1



Step 2



Step 3



Installation Guide

— Philips TrueForce Core LED lamp



Please take the time to read this installation guide. The guide contains important information and notes regarding the installation and operation.

IMPORTANT!

- Always switch off the power supply before commencing work!
- Please read the installation instructions carefully and follow the wiring instructions to ensure safety.
- The product is NOT dimmable.
- The product can be operated on Direct Mains or ElectroMagnetic (EM) gear without ignitor. Ignitor ALWAYS needs to be disconnected from the system.
- Recommended to remove capacitor to improve system power factor.
- The product is not compatible with electronic gear.
- Suitable for use in operating temperature range between -20°C to +45°C.
- Do not change the structure or any components of the product to ensure safety.
- The product is designed to fit in standard IEC compliant E27/E40 lamp holders.
- The product should be installed by qualified professional.
- Perform inspection before installation to ensure the luminaire and lamp holder are in good condition to carry the weight and performance of the product.
- Recommended not to use in open luminaire.
- Please do not apply the product in applications which contains emergency or/and explosive proof luminaires.
- The total system performance may vary depending on the lighting/luminaire system.
- For latest information, please refer to www.philips.com/lighting.
- In case of doubt, please consult Philips representative.
- *outdoor applications require the lamp cap to be protected with suitable lamp socket.

DISCLAIMER:

Signify disclaims liability for any direct, indirect or incidental damages in case of installation performed either not according to this guide or not performed by a professional electrician.

CE RoHS COMPLIANT IP65*

PHILIPS

size: 80g双胶纸, L×W 148×210mm double side print

SIGNIFY

Brand Philips
Product Family LEDBulb_ND
Shape _____
Wattage _____
Template Ref. N/A
SGS number 6197092
12-NC.NBR 324165581822
Masterdrawing 148x210mm
CRC Ref. _____

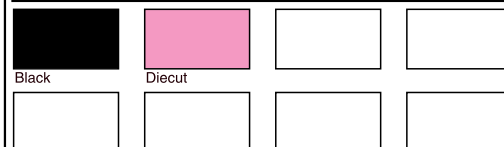
Barcode No. N/A

Operator(s) winterchen

VERSION No. **v1**

Date in 20171110

Date amended 20201012



Date Check _____

Check briefing Traffic

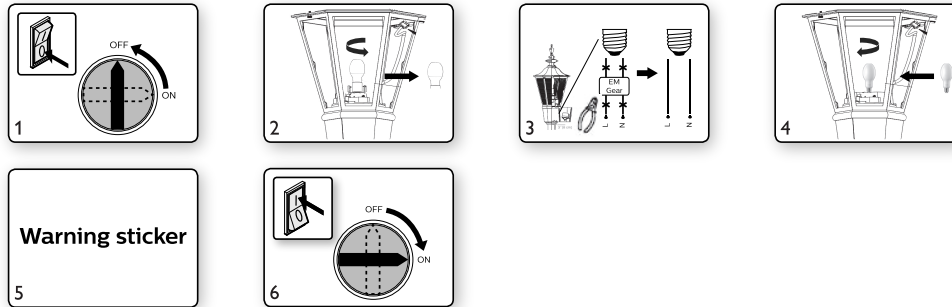
Artwork document

- | | |
|----------------------------------|---|
| <input type="checkbox"/> Legend | <input type="checkbox"/> Number of colors |
| <input type="checkbox"/> 12NC | <input type="checkbox"/> Trapping/Bleed |
| <input type="checkbox"/> Barcode | <input type="checkbox"/> Images hires |
| <input type="checkbox"/> Diecut | <input type="checkbox"/> Jobsizes |

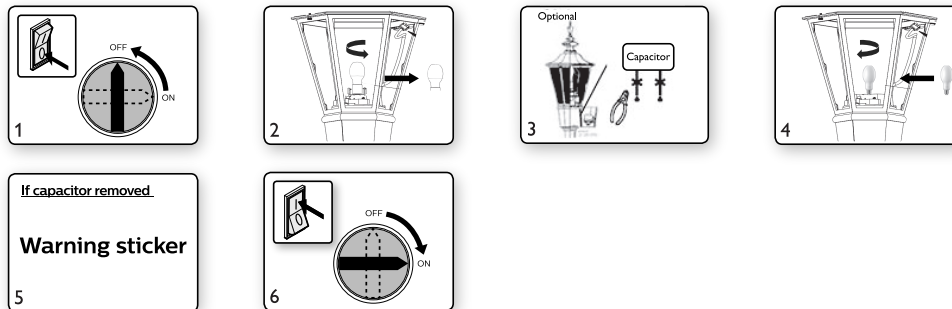
Approval

- QC Lithographer SGS Shanghai Production
 Product Manager jerry.zhang_1@signify.com
 Traffic Manager Esdon Lu

For replacing HPL/SON/Other Lamps, Convert to Direct Mains (Recommended)

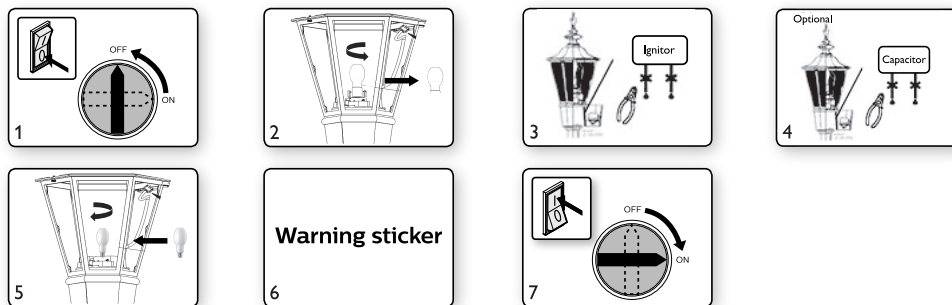


For replacing HPL Lamps and keeping the EM ballast



- After capacitor is removed, open wires should be terminated properly.
- If capacitor remains the power factor might be lower.

For replacing SON Lamps and keeping the EM ballast



- After capacitor/ignitor is removed, open wires should be terminated properly.
- If capacitor remains the power factor might be lower.



© 2020 Signify Holding
 ©ignify

All rights reserved. Reproduction in whole or in part is prohibited without the prior written consent of the copyright owner. The information presented in this document does not form part of any quotation or contract, is believed to be accurate and reliable and may be changed without notice. No liability will be accepted by the publisher for any consequence of its use. Publication thereof does not convey nor imply any license under patent or other industrial or intellectual property rights.

10/2020
www.philips.com/lighting

3241 655 81822

SIGNIFY

Brand Philips
 Product Family LEDBulb_ND
 Shape _____
 Wattage _____
 Template Ref. N/A
 SGS number 6197092
 12-NC.NBR 324165581822
 Masterdrawing 148x210mm
 CRC Ref. _____

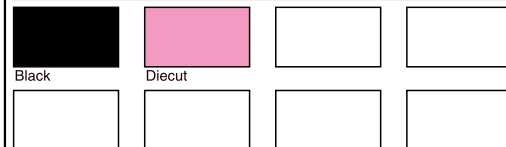
Barcode No. N/A

Operator(s) winterchen

VERSION No. **v1**

Date in 20171110

Date amended 20201012



Date Check _____

Check briefing Traffic

Artwork document

Legend Number of colors

12NC Trapping/Bleed

Barcode Images hires

Diecut Jobsizes

Approval

QC Lithographer SGS Shanghai Production

Product Manager jerry.zhang_1@signify.com

Traffic Manager Esdon Lu