

# PHILIPS

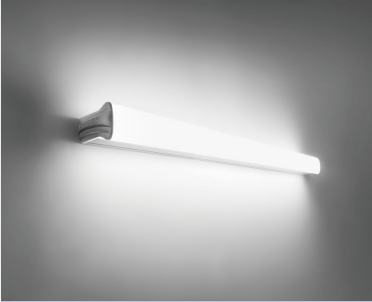
## Wall light

Linea

31173 Shellline 10W 6500K

other

LED



31173/31/D4



## Light and relaxed

Philips myLiving Decolinea Slimline batten wall light combine performance and looks into its simple design. With long life LED technology and up to 15,000 hours usage, this light is the ideal replacement of the traditional T5 batten.

### Easy installation

- Easy installation

### Energy saving

- Built-in LED, as part of the system

### Energy efficient

- 80% energy saving, compared to traditional light sources

# Highlights

## Easy installation



No more hassle in installation. Just fix or hang securely on the wall and plug in, now this luminaire is ready to light on.

## Integrated LED light source



A light source you can trust. With integrated LED light source, you won't have to worry about maintenance or lamp replacement while having the perfect light ambiance in your home.

## 80% energy saving



Save up to 80% energy compared to your standard bulb. It pays for itself and saves you money year after year. So reduce your energy bill and start saving Now.

# Specifications

## Design and finishing

- Color: Other
- Material: Synthetic

## Extra feature/accessory incl.

- Diffused light effect: Yes
- LED integrated: Yes

## Miscellaneous

- Especially designed for: Living- & Bedroom, Home office & Study
- Style: Contemporary
- Type: Wall Lights
- EyeComfort: No

## Product dimensions and weight

- Net weight: 0.112 kg
- Height: 3.4 cm
- Length: 60.5 cm
- Width: 2.8 cm

## Service

- Warranty: 1 year(s)

## Technical specifications

- Lifetime up to: 15,000 hour(s)
- Total lumen output fixture: 600 lm
- Mains power: Range 110 V - 240 V, 50-60 Hz
- LED: Yes
- Built in LED: Yes
- Number of bulbs: 1
- Wattage bulb included: 9 W
- IP code: IP20, protection against objects bigger than 12.5 mm, no protection against water
- Class of protection: II - double insulated



Issue date: 2025-02-11  
Version: 0.274

© 2025 Signify Holding. All rights reserved. Signify does not give any representation or warranty as to the accuracy or completeness of the information included herein and shall not be liable for any action in reliance thereon. The information presented in this document is not intended as any commercial offer and does not form part of any quotation or contract, unless otherwise agreed by Signify. Philips and the Philips Shield Emblem are registered trademarks of Koninklijke Philips N.V.