



# For top performance and sustainability

## MASTER LEDtube T8 UltraEfficient

With energy prices rising and the EU's Green Deal<sup>2</sup> continuing to fund energy efficient building renovations, many are looking into make their company's lighting more sustainable. The new Philips MASTER LEDtube Ultra Efficient T8 is a true breakthrough on the way to more sustainable lighting. It replaces your current fluorescent tube or LED tube directly and offers immediately great energy cost reduction as well as a much longer lifetime!

### Benefits

- Absolute performance in energy saving: up to 44% compared with standard LED tube
- Reliable performance of up to 100,000 hours
- Energy cost and CO<sub>2</sub> savings from the start

### Features

- Ultra efficiency achieve an incredible class A/B energy efficiency rating
- Up to 100,000 hours lifetime
- Plastic design makes it true shatterproof according to IEC 61549 standards
- Rotatable end-cap that gives light where needed
- HACCP-enabled, supported by product level NSF certificate

### Application

- Industry & warehouse
- Office, education & retail

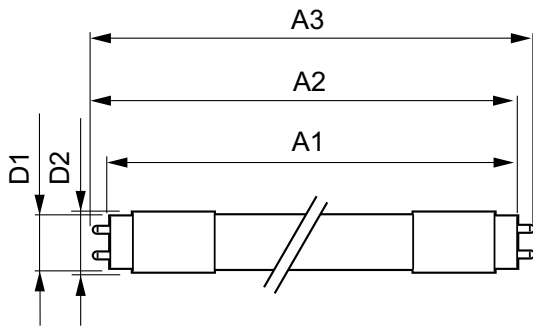
# MASTER LEDtube T8 UltraEfficient

## Versions



LEDtube 1200mm 15W G13

## Dimensional drawing



Product	D1	D2	A1	A2	A3
MAS LEDtube 1500mm UE 20W 865 T8	25.8 mm	28 mm	1,498.8 mm	1,505.9 mm	1,513 mm

