

Solar Panels for Philips Solar Lighting.

Solar Panel Sub System

A Range of Solar panels from 20 W to 325 W specially designed for Philips Solar Street lighting, Flood lighting and Solar Indoor Systems

Benefits

- Robust quality managed by Philips quality discipline, supplied by world class manufacturers
- Customization available
- Plug and play design for easy connection and installation
- TUV certification

Features

- Connectors with excellent aging resistance and UV endurance, for harsh environment operations.
- Environmentally sealed to IP67
- Ambient temperature range : -40~+85。 C
- Simple crimp-and-poke application
- Tactile and audible mating feedback

Application

- Solar Street Lighting
- Solar Flood Lighting
- Solar Indoor Systems

Solar Panel Sub System

Versions

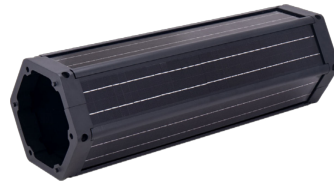


Solar Panel Sub System

Solar Panel Sub System

Solar Panel Sub System

Solar Panel Sub System

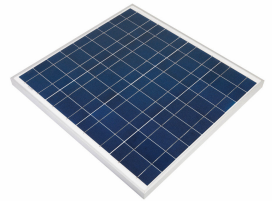


Solar Panel Sub System

Solar Panel Sub System

Cylindrical Vertical Solar Panel

Solar Panel Sub System



Solar Panel Sub System

Solar Panel Sub System

Solar Panel Sub System

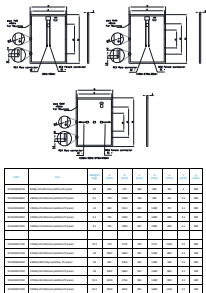
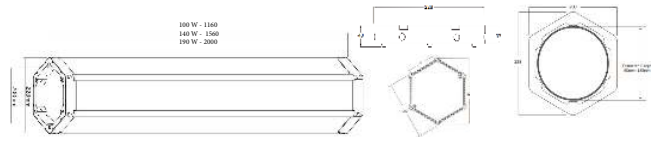
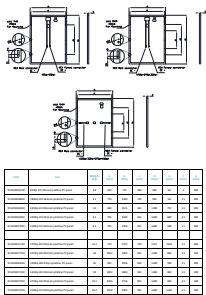
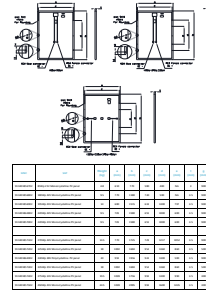
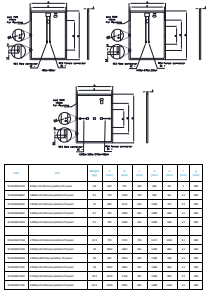
90W 18V Panel subsystem



Solar Panel Sub System

Solar Panel Sub System

Dimensional drawing



Operating and Electrical

Order Code	Full Product Name	Cable connection kit	Panel peak wattage	Panel type	Panel voltage
911401857102	270Wp 42V Monocrystalline PV panel	-	270 W	Mono crystalline	42 V
911401803102	60W 17V Panel subsystem Vmpp 17.9V	Included	60 W	Poly crystalline	17 V
911401803302	75W 17V Panel subsystem Vmpp 17.89V	Included	75 W	Poly crystalline	17 V

Order Code	Full Product Name	Cable connection kit	Panel peak wattage	Panel type	Panel voltage
911401803502	125W 17V Panel subsystem Vmpp 18.7V	Included	125 W	Poly crystalline	17 V
911401803702	100W 17V Panel subsystem Vmpp 18.22V	Included	100 W	Poly crystalline	17 V
911401803802	105W 17V Panel subsystem Vmpp 18V	Included	105 W	Poly crystalline	17 V

Solar Panel Sub System

Order Code	Full Product Name	Cable connection kit	Panel peak wattage	Panel type	Panel voltage
911401803902	155W 17V Panel subsystem Vmpp 18.93V	Included	155 W	Poly crystalline	17 V
911401804002	130W 19V Panel subsystem Vmpp 20.16V	Included	130 W	Poly crystalline	19 V
911401804402	315W 36V Panel subsystem Vmpp 37.37V	Included	315 W	Poly crystalline	36 V
911401804502	310W 36V Panel subsystem Vmpp 37.13V	Included	310 W	Poly crystalline	36 V
911401857402	375Wp 34V Monocrystalline PV panel	-	375 W	Mono crystalline	34 V
911401857502	450Wp 41V Monocrystalline PV panel	-	450 W	Mono crystalline	41 V
911401862002	330Wp 38V Polycrystalline PV panel	-	330 W	Poly crystalline	38 V
911401857202	325Wp 34V Monocrystalline PV panel	-	325 W	Mono crystalline	34 V
911401862802	220Wp 42V Monocrystalline PV panel	-	220 W	Mono crystalline	42 V
911401821902	140Wp Vertical Panel Subsystem Vmpp 18V	Included	140 W	Mono crystalline	18 V

Order Code	Full Product Name	Cable connection kit	Panel peak wattage	Panel type	Panel voltage
911401822002	140Wp Vertical Panel Subsystem Vmpp 36V	Included	140 W	Mono crystalline	36 V
911401822102	200Wp Vertical Panel Subsystem Vmpp 18V	Included	190 W	Mono crystalline	18 V
911401822202	200Wp Vertical Panel Subsystem Vmpp 36V	Included	190 W	Mono crystalline	36 V
911401856802	180Wp 42V Monocrystalline PV panel	-	180 W	Mono crystalline	42 V
911401857002	220Wp 21V Monocrystalline PV panel	-	220 W	Mono crystalline	21 V
911401857302	335Wp 35V Monocrystalline PV panel	-	335 W	Mono crystalline	35 V
911401856902	195Wp 41V Monocrystalline PV panel	-	195 W	Mono crystalline	41 V
911401893501	200W 36V Panel subsystem Vmpp 38.99V	Included	200 W	Poly crystalline	36 V
911401856702	85Wp 21V Monocrystalline PV panel	-	85 W	Mono crystalline	21 V

Temperature

Order Code	Full Product Name	Ambient temperature range
911401857102	270Wp 42V Monocrystalline PV panel	-40 °C to 85 °C
911401803102	60W 17V Panel subsystem Vmpp 17.9V	-40 to +85 °C
911401803302	75W 17V Panel subsystem Vmpp 17.89V	-40 to +85 °C
911401803502	125W 17V Panel subsystem Vmpp 18.7V	-40 to +85 °C
911401803702	100W 17V Panel subsystem Vmpp 18.22V	-40 to +85 °C
911401803802	105W 17V Panel subsystem Vmpp 18V	-40 to +85 °C
911401803902	155W 17V Panel subsystem Vmpp 18.93V	-40 to +85 °C
911401804002	130W 19V Panel subsystem Vmpp 20.16V	-40 to +85 °C
911401804402	315W 36V Panel subsystem Vmpp 37.37V	-40 to +85 °C
911401804502	310W 36V Panel subsystem Vmpp 37.13V	-40 to +85 °C
911401857402	375Wp 34V Monocrystalline PV panel	-40 °C to 85 °C
911401857502	450Wp 41V Monocrystalline PV panel	-40 °C to 85 °C
911401862002	330Wp 38V Polycrystalline PV panel	-40 °C to 85 °C
911401857202	325Wp 34V Monocrystalline PV panel	-40 °C to 85 °C
911401862802	220Wp 42V Monocrystalline PV panel	-40 °C to 85 °C

Order Code	Full Product Name	Ambient temperature range
911401821902	140Wp Vertical Panel Subsystem Vmpp 18V	-40 to +85 °C
911401822002	140Wp Vertical Panel Subsystem Vmpp 36V	-40 to +85 °C
911401822102	200Wp Vertical Panel Subsystem Vmpp 18V	-40 to +85 °C
911401822202	200Wp Vertical Panel Subsystem Vmpp 36V	-40 to +85 °C
911401856802	180Wp 42V Monocrystalline PV panel	-40 °C to 85 °C
911401857002	220Wp 21V Monocrystalline PV panel	-40 °C to 85 °C
911401857302	335Wp 35V Monocrystalline PV panel	-40 °C to 85 °C
911401856902	195Wp 41V Monocrystalline PV panel	-40 °C to 85 °C
911401893501	200W 36V Panel subsystem Vmpp 38.99V	-40 to +85 °C
911401856702	85Wp 21V Monocrystalline PV panel	-40 °C to 85 °C

Mechanical and Housing

Solar Panel Sub System

Order Code	Full Product Name	Overall height	Overall length	Overall width
911401857102	270Wp 42V Monocrystalline PV panel	3.5 mm	1,725 mm	770 mm
911401803102	60W 17V Panel subsystem Vmpp 17.9V	35 mm	639 mm	666 mm
911401803302	75W 17V Panel subsystem Vmpp 17.89V	35 mm	774 mm	666 mm
911401803502	125W 17V Panel subsystem Vmpp 18.7V	35 mm	1,195 mm	666 mm
911401803702	100W 17V Panel subsystem Vmpp 18.22V	35 mm	990 mm	666 mm
911401803802	105W 17V Panel subsystem Vmpp 18V	35 mm	990 mm	666 mm
911401803902	155W 17V Panel subsystem Vmpp 18.93V	35 mm	1,476 mm	666 mm
911401804002	130W 19V Panel subsystem Vmpp 20.16V	35 mm	1,244 mm	666 mm
911401804402	315W 36V Panel subsystem Vmpp 37.37V	40 mm	1,956 mm	992 mm
911401804502	310W 36V Panel subsystem Vmpp 37.13V	40 mm	1,956 mm	992 mm
911401857402	375Wp 34V Monocrystalline PV panel	3.5 mm	1,756 mm	1,039 mm
911401857502	450Wp 41V Monocrystalline PV panel	3.5 mm	2,095 mm	1,039 mm
911401862002	330Wp 38V Polycrystalline PV panel	3.5 mm	1,956 mm	992 mm

Order Code	Full Product Name	Overall height	Overall length	Overall width
911401857202	325Wp 34V Monocrystalline PV panel	3.5 mm	1,684 mm	1,002 mm
911401862802	220Wp 42V Monocrystalline PV panel	3.5 mm	1,580 mm	705 mm
911401821902	140Wp Vertical Panel Subsystem Vmpp 18V	1,560 mm	228 mm	220 mm
911401822002	140Wp Vertical Panel Subsystem Vmpp 36V	1,560 mm	228 mm	220 mm
911401822102	200Wp Vertical Panel Subsystem Vmpp 18V	2,000 mm	228 mm	220 mm
911401822202	200Wp Vertical Panel Subsystem Vmpp 36V	2,000 mm	228 mm	220 mm
911401856802	180Wp 42V Monocrystalline PV panel	3.5 mm	1,180 mm	770 mm
911401857002	220Wp 21V Monocrystalline PV panel	3.5 mm	1,580 mm	705 mm
911401857302	335Wp 35V Monocrystalline PV panel	3.5 mm	1,684 mm	1,002 mm
911401856902	195Wp 41V Monocrystalline PV panel	3.5 mm	1,515 mm	680 mm
911401893501	200W 36V Panel subsystem Vmpp 38.99V	40 mm	1,318 mm	992 mm
911401856702	85Wp 21V Monocrystalline PV panel	3 mm	770 mm	610 mm

Approval and Application

Order Code	Full Product Name	Ingress protection code
911401857102	270Wp 42V Monocrystalline PV panel	-
911401803102	60W 17V Panel subsystem Vmpp 17.9V	IP67
911401803302	75W 17V Panel subsystem Vmpp 17.89V	IP67
911401803502	125W 17V Panel subsystem Vmpp 18.7V	IP67
911401803702	100W 17V Panel subsystem Vmpp 18.22V	IP67
911401803802	105W 17V Panel subsystem Vmpp 18V	IP67
911401803902	155W 17V Panel subsystem Vmpp 18.93V	IP67
911401804002	130W 19V Panel subsystem Vmpp 20.16V	IP67
911401804402	315W 36V Panel subsystem Vmpp 37.37V	IP67
911401804502	310W 36V Panel subsystem Vmpp 37.13V	IP67
911401857402	375Wp 34V Monocrystalline PV panel	-
911401857502	450Wp 41V Monocrystalline PV panel	-
911401862002	330Wp 38V Polycrystalline PV panel	-

Order Code	Full Product Name	Ingress protection code
911401857202	325Wp 34V Monocrystalline PV panel	-
911401862802	220Wp 42V Monocrystalline PV panel	-
911401821902	140Wp Vertical Panel Subsystem Vmpp 18V	IP65
911401822002	140Wp Vertical Panel Subsystem Vmpp 36V	IP65
911401822102	200Wp Vertical Panel Subsystem Vmpp 18V	IP65
911401822202	200Wp Vertical Panel Subsystem Vmpp 36V	IP65
911401856802	180Wp 42V Monocrystalline PV panel	-
911401857002	220Wp 21V Monocrystalline PV panel	-
911401857302	335Wp 35V Monocrystalline PV panel	-
911401856902	195Wp 41V Monocrystalline PV panel	-
911401893501	200W 36V Panel subsystem Vmpp 38.99V	IP67
911401856702	85Wp 21V Monocrystalline PV panel	-

Solar Panel Sub System

