

# PHILIPS

Wall light

Led outdoor

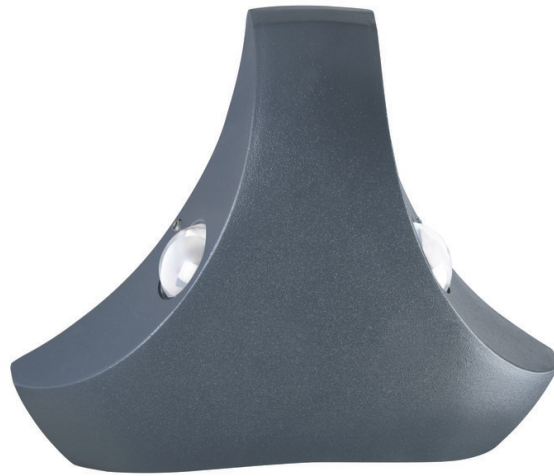
9W

Aluminium

Grey

IP 44

919215200008



## Tri-directional beam

Superior illumination. Classic anthracite finish. Premium aluminium material. Optimum performance

### Light effect

- Provides a bright white light

### Sustainable light solutions

- High quality LED light

### Beacon of trust

- You can trust what the Philips packaging is saying

### Premium quality

- Die-casted aluminum for a premium look and feel

### Specially designed for your outdoors

- Resistant to all weather conditions

# Highlights

## Superior light quality High quality LED light



The LED technology, integrated into this Philips lamp, is a uniquely developed solution by Philips. While instantly turned on, it enables an optimal light output and brings out vivid colors in your home.

## Reliable quality

Philips keeps its promises about lamp performance. You can trust what the Philips packaging is saying about light output, lifetime and wattage equivalent to incandescent lamps.

## Premium materials



## Resistant to all weather



This Philips Hue outdoor sensor is specially designed for use in outdoor environments and has undergone rigorous tests to ensure its performance. This lamp is designed with IP54: it is protected against water splashed from any direction. The product will withstand heavy rainfall and other weather conditions.

# Specifications

## Bulb characteristics

- Intended use: Outdoor

## Design and finishing

- Color: Grey
- Material: Aluminium

## Extra feature/accessory incl.

- Anti rust anti dust: Yes
- Bi-directional light beams: Yes
- Centerpiece: Yes
- Fully weatherproof: Yes
- LED integrated: Yes
- Made for LED only: Yes
- Perfectly suited for up/down mounting: Yes
- Photometric data available: Yes
- Premium quality material: Yes
- Resistant high quality material: Yes
- Warm White Light: Yes
- Waterproof: Yes

## Light characteristics

- Color rendering index (CRI): 80

## Miscellaneous

- Especially designed for: Garden & Patio
- Style: Expressive
- Type: Spot Light

## Service

- Warranty: 1 year(s)

## Technical specifications

- Lifetime up to: 25,000 hour(s)
- Total lumen output fixture: 550
- Bulb technology: LED
- Light color: 3000K
- Mains power: 220-240 V
- LED: Yes
- Built in LED: Yes
- Wattage bulb included: 9
- IP code: IP44
- Class of protection: Class I

**Packaging dimensions and weight**

- EAN/UPC - product: 8727900078251
- Net weight: 0.59 kg
- Gross weight: 2.04 kg
- Height: 17 cm
- Length: 18.8 cm
- Width: 5.8 cm
- Material number (12NC): 919215200008



Issue date: 2024-09-17  
Version: 0.368

© 2024 Signify Holding. All rights reserved. Signify does not give any representation or warranty as to the accuracy or completeness of the information included herein and shall not be liable for any action in reliance thereon. The information presented in this document is not intended as any commercial offer and does not form part of any quotation or contract, unless otherwise agreed by Signify. Philips and the Philips Shield Emblem are registered trademarks of Koninklijke Philips N.V.

[www.lighting.philips.com](http://www.lighting.philips.com)