

# PHILIPS

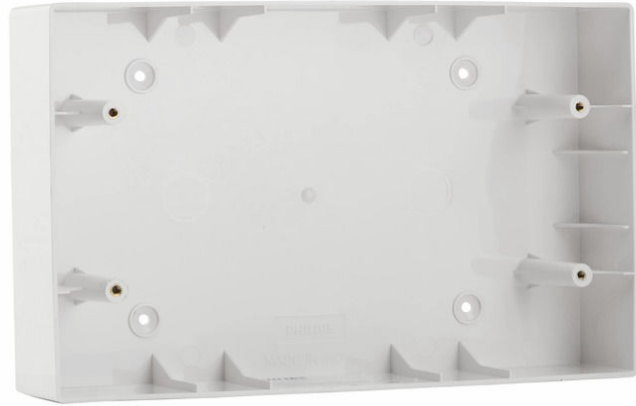
Surface Installation  
Box

Switches & Sockets

White

12 Module

913713871701



## Switch to safe living

Philips Accessories that add safety to your life & design to your Home Décor.

### Easy to use

- Glossy finish
- Suitable for most available grid frames
- Wide range to choose from

### Convenience

- Convenient mounting

# Highlights

## Glossy finish

Glossy external finish for easy to clean and long lasting finish.

## Suitable for most available grid frames

Designed keeping in mind all the available grid frames.

## Wide range to choose from

Available in 2M, 3M, 4M, 6M, 8M Linear, 8M Square, 12M & 18M size.

## Convenient mounting

Can be mounted either on surface or inside the wall.

# Specifications

## Design and finishing

- Material: Plastic
- Product Range: Durro
- Minimum Installation Box Depth: 5 cm

## Product dimensions and weight

- Length: 24.4 cm
- Width: 15 cm
- Depth: 5 cm

## Packaging dimensions and weight

- EAN/UPC - product: 8719514258389
- Net weight: 185 g
- Gross weight: 195 g
- Height: 5 cm
- Length: 24.4 cm
- Width: 15 cm
- Thickness: 2 mm



Issue date: 2025-02-17  
Version: 0.334

© 2025 Signify Holding. All rights reserved. Signify does not give any representation or warranty as to the accuracy or completeness of the information included herein and shall not be liable for any action in reliance thereon. The information presented in this document is not intended as any commercial offer and does not form part of any quotation or contract, unless otherwise agreed by Signify. Philips and the Philips Shield Emblem are registered trademarks of Koninklijke Philips N.V.

[www.lighting.philips.com](http://www.lighting.philips.com)