

# PHILIPS

Grid & Cover

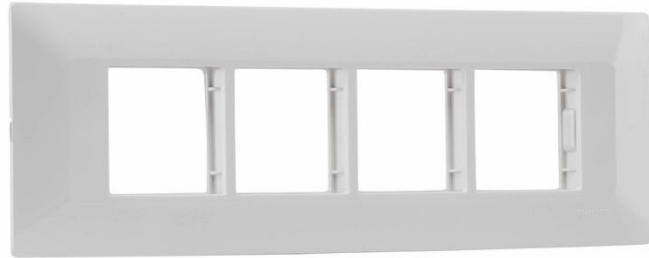
Switches & Sockets

Smart Antibacterial

White

8 Module Linear

913713823501



## Ensure a safer living with Smart Anti-bacterial Range

Philips Antibacterial Range kills 99% germs with in-built Silver Ion Technology.

### Easy to use

- Front insertion & front removal
- Glossy finish
- Smooth curvy finish for easy maintenance
- Guiding locators
- Sleek design
- Easy installation

### Safe to use

- Safe to use even with wet hands

### Advanced

- Silver Ion Technology
- BactiSafe
- Non Toxic life long

### Choose for a sustainable solution

- RoHS compliant

### Durability

- Flexible cover frame

**Convenience**

- Wide range to choose from
- Suitable for most available boxes

**Strength**

- Unique honeycomb construction

# Highlights

## Front insertion & front removal

Smart way to preserve your designer walls, remove your switch/socket without dismantle the plates. Inserts can be fixed or removed from front.

## Glossy finish

Glossy external finish for easy to clean and long lasting finish.

## Smooth curvy finish for easy maintenance

Smooth curve and glossy finish doesn't not allowed dust to accumulate on surface and makes it easy to clean.

## Guiding locators

Guiding locators provided in grid frame to guide the insert for easy installation.

## Sleek design

Sleek Design so that the product doesn't come out too much from the wall.

## Easy installation

Slot for Horizontal and vertical mounting/Hanging.

## Safe to use even with wet hands

No seepage of water due to precision & covered design.

## Silver Ion Technology

Material has Silver Ions which turn bacteria into deadly zombies.

## BactiSafe

Kills 99% bacteria as per test protocol JIS Z 2801:2010 conducted on E. Coli & Staphylococcus.

## Non Toxic life long

Silver Ion technology has longer life of more than 10 years as it's in built in material & has no side effects.

## RoHS compliant

All the switches/sockets are free from any hazardous substance to the environment making it safe to use.

## Flexible cover frame

Flexible cover frames which completely flushes well even with uneven walls.

## Wide range to choose from

Different sizes available to meet customer requirement.

## Suitable for most available boxes

Covers are designed in such a way that fits with most of the available installation boxes including the wooden boxes.

## Unique honeycomb construction

Honeycomb construction provide the better strength to grid frames which last long.

# Specifications

## Design and finishing

- Color: White
- Material: PC
- Module/Gang: 8 Module Linear
- Product Range: Smart Antibacterial
- Minimum Installation Box Depth: 5 cm

## Product dimensions and weight

- Length: 26.03 cm
- Width: 8.8 cm
- Depth: 1.5 cm

## Service

- Warranty: 2 year(s)

## Packaging dimensions and weight

- EAN/UPC - product: 8718699738464
- Net weight: 0.08 kg
- Gross weight: 0.08 kg
- Height: 1.5 cm
- Length: 26 cm
- Width: 8.8 cm



Issue date: 2025-02-17  
Version: 0.341

© 2025 Signify Holding. All rights reserved. Signify does not give any representation or warranty as to the accuracy or completeness of the information included herein and shall not be liable for any action in reliance thereon. The information presented in this document is not intended as any commercial offer and does not form part of any quotation or contract, unless otherwise agreed by Signify. Philips and the Philips Shield Emblem are registered trademarks of Koninklijke Philips N.V.