

PHILIPS

Mobile Portable Light

Smart LED

Full color

Dual zone light effect

Touch panel control



8719514463714



Two color zones to take with you everywhere

Enjoy a combination of soft light and colorful gradients that turn your personal space into all kinds of special. Take Mobile LED light with you anywhere around your home or outside and give your cozy corner an inviting glow.

Easy setup

- Easy plug and play

Smart control

- Control from anywhere with your smartphone
- Go hands-free with voice control
- Touch to control the light

Smart features

- Automate your light with schedules

Light modes

- Customize Scenes with preset dynamic light modes
- Unique dual zone light effect

Form factor

- Portable design to bring light everywhere

Highlights

Easy plug and play



WiZ works with your existing Wi-Fi router, no additional gateway is needed. Simply plug in your new light, download the WiZ app and you're ready to go!

Control from anywhere



Control your WiZ lights wherever you are with smartphone. No need to worry if you've left your lights on before leaving home. WiZ app is available for iOS and Android.

Go hands-free with voice control



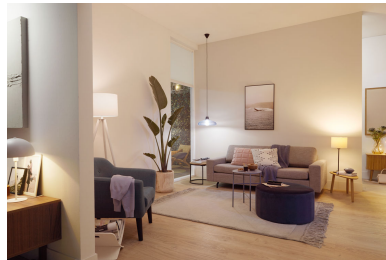
Control your lights with just the sound of your voice, simply enable integration with Google, Alexa or add to your Siri shortcuts.

Touch panel control



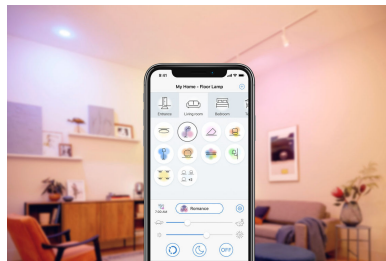
This lamp features a touch panel for turning it on/off, and changing your favorite, pre-set light modes. A simple swipe will dim the light. You won't even need your smartphone or a voice assistant.

Automate your light with schedules



Automate the lights to fit your daily or weekly routines. Schedule your light to turn on before you arrive home and keep it off when not needed.

Customized Scenes



Mix different color and white lights modes to create the perfect light ambience for your daily moment. Save it and call it out anytime with app, remote or voice.

Dual zone light effect



Try a variety of light modes to create a unique gradient light effect in your style. Simply set the upper and lower parts of the lamp to emit different colors.

Portable design



A handy, wireless lamp with a rechargeable built-in-battery. Carry this portable light wherever you go, to illuminate a garden party, a romantic dinner or even story time with the kids.

Specifications

Bulb characteristics

- Intended use: Indoor
- Lamp shape: Round

Design and finishing

- Color: White
- Material: Plastic

Durability

- Average life (at 2.7 hrs/day): 25 year(s)
- Lumen maintenance factor: 70%
- Number of switch cycles: 50,000

Extra feature/accessory incl.

- Adjustable spot head: No
- Dimmable with remote control: Yes
- LED integrated: Yes
- On/off switch on wire: No
- Remote control included: No

Light characteristics

- Color consistency: 6 SDCM
- Color rendering index (CRI): 80
- Warm-up time to 60% light: <2

Miscellaneous

- Especially designed for: Functional
- EyeComfort: Yes

Other characteristics

- Lamp current: 90 mA
- Efficacy: 29 lm/W

Power consumption

- Power factor: 0.6
- Voltage: 220-240 V

Product dimensions and weight

- Net weight: 0.65 kg
- Height: 19.3 cm
- Length: 11.6 cm
- Width: 11.6 cm

Service

- Warranty: 2 year(s)

Technical specifications

- Lifetime up to: 25,000 hour(s)
- Diameter: 116 mm
- Total lumen output fixture: 400
- Light color: 2200-6500 (RGB)
- Fixture dimmable: Wireless Dim - Do not use with dimmer
- LED: Yes
- Built in LED: Yes
- Wattage bulb included: 13.5
- IP code: IP20
- Class of protection: Class II



Issue date: 2024-11-22
Version: 0.88

© 2024 Signify Holding. All rights reserved. Signify does not give any representation or warranty as to the accuracy or completeness of the information included herein and shall not be liable for any action in reliance thereon. The information presented in this document is not intended as any commercial offer and does not form part of any quotation or contract, unless otherwise agreed by Signify. Philips and the Philips Shield Emblem are registered trademarks of Koninklijke Philips N.V.

www.lighting.philips.com