

# PHILIPS

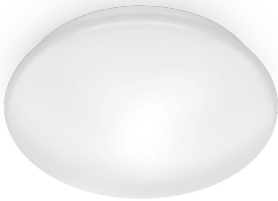
## Adria Ceiling 17W

Smart LED

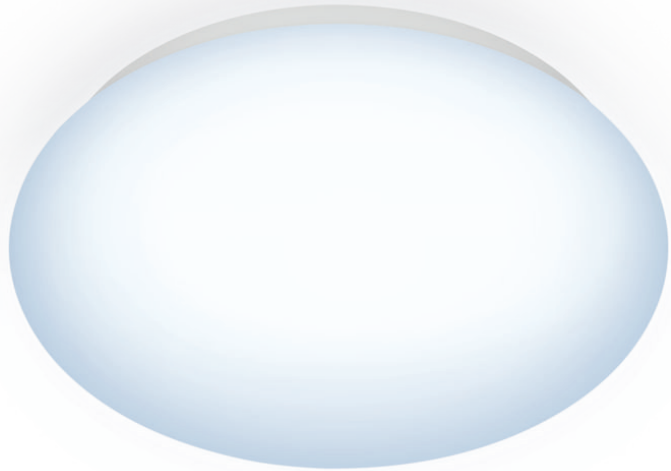
Daylight

Dimensions: Ø320

IP20/Plastic/White



8719514359208



## Easy to control, dimmable smart fixture

Dim the room (without a dimmer switch!) with the Philips Adria LED dimmable white smart ceiling light. Use with the WiZ app or your voice to turn on and off or dim and brighten the room on Wi-Fi setups.

### Easy setup

- Easy plug and play

### Smart control

- Control from anywhere with your smartphone
- Go hands-free with voice control

### Smart features

- Smart dimming via app or voice
- Automate your light with schedules
- Energy monitoring

### Light modes

- Cool white light

### Form factor

- Uniform light distribution

# Highlights

## Easy plug and play



WiZ works with your existing Wi-Fi router, no additional gateway is needed. Simply plug in your new light, download the WiZ app and you're ready to go!

## Control from anywhere



Control your WiZ lights wherever you are with smartphone. No need to worry if you've left your lights on before leaving home. WiZ app is available for iOS and Android.

## Go hands-free with voice control



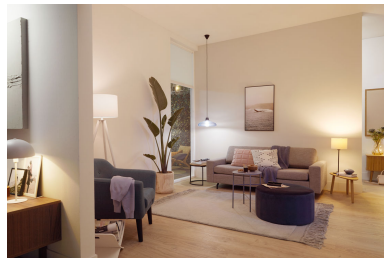
Control your lights with just the sound of your voice, simply enable integration with Google, Alexa or add to your Siri shortcuts.

## Smart dimming



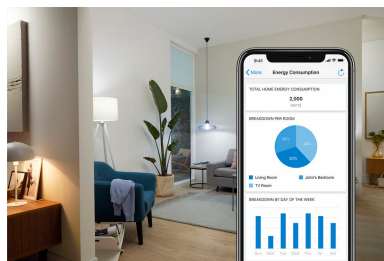
Dim your lights to your desired brightness level via your smartphone, remote or your voice. No need to install an expensive dimmer.

## Automate your light with schedules



Automate the lights to fit your daily or weekly routines. Schedule your light to turn on before you arrive home and keep it off when not needed.

## Energy monitoring



The WiZ app keeps records of the energy consumption of your lights. View your weekly or daily report and plan your lighting wisely for an optimized energy consumption at home.

## Cool white light



Brighten up your home with energizing cool white light. A smart light that simply adapts to your daily activities.

## Uniform light distribution



Get even light throughout the room with this light, which uniformly distributes its soft, bright light throughout the room.

# Specifications

## Bulb characteristics

- Intended use: Indoor
- Lamp shape: Round

## Design and finishing

- Color: White
- Material: Metal, Plastic

## Durability

- Average life (at 2.7 hrs/day): 15 year(s)
- Lumen maintenance factor: 70%
- Number of switch cycles: 15,000

## Extra feature/accessory incl.

- Adjustable spot head: No
- Dimmable with remote control: Yes
- LED integrated: Yes
- Remote control included: No

## Light characteristics

- Color consistency: <6 SDCM
- Color rendering index (CRI): 80
- Warm-up time to 60% light: <2

## Miscellaneous

- Especially designed for: Functional
- EyeComfort: Yes

## Other characteristics

- Lamp current: 143 mA
- Efficacy: 88 lm/W

## Power consumption

- Power factor: 0.5
- Voltage: 220-240 V

## Product dimensions and weight

- Net weight: 0.45 kg
- Height: 6.8 cm
- Length: 32 cm
- Width: 32 cm

## Service

- Warranty: 2 year(s)

## Technical specifications

- Lifetime up to: 15,000 hour(s)
- Diameter: 320 mm
- Total lumen output fixture: 1500
- Light color: 6500
- Fixture dimmable: Wireless Dim - Do not use with dimmer
- LED: Yes
- Built in LED: Yes
- Wattage bulb included: 17
- IP code: IP20
- Class of protection: Class I

## Packaging dimensions and weight

- EAN/UPC - product: 8719514359208
- Net weight: 0.42 kg
- Gross weight: 0.64 kg
- Height: 35.2 cm
- Length: 7.2 cm
- Width: 35.2 cm
- Material number (12NC): 929002687007



Issue date: 2024-07-25  
Version: 0.124

© 2024 Signify Holding. All rights reserved. Signify does not give any representation or warranty as to the accuracy or completeness of the information included herein and shall not be liable for any action in reliance thereon. The information presented in this document is not intended as any commercial offer and does not form part of any quotation or contract, unless otherwise agreed by Signify. Philips and the Philips Shield Emblem are registered trademarks of Koninklijke Philips N.V.

[www.lighting.philips.com](http://www.lighting.philips.com)