

PHILIPS

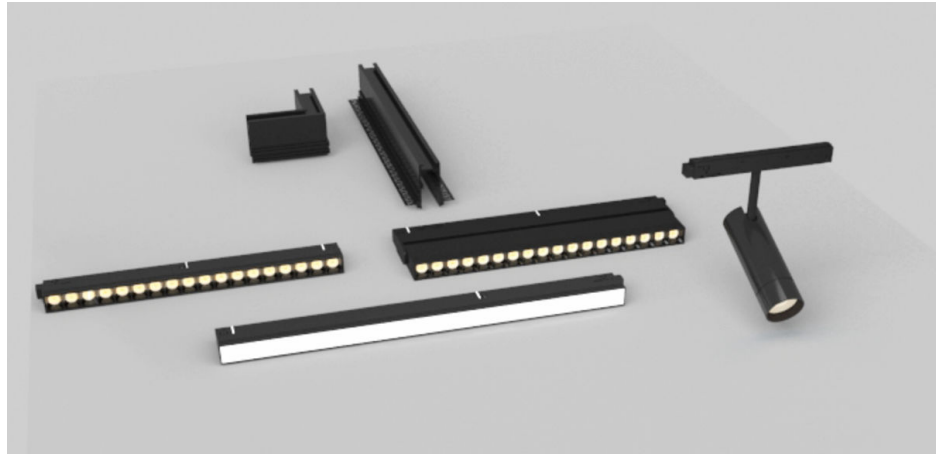
Recessed spot light

myLiving

Magnetic Sys

Black

6922341954610



Smart lighting for you daily living

Fashion concise line draw the outline of the environment light path. In order to create a high quality space with Non-center Piece design, Philips launches brand new Magnetic Sys products. With the unique patent GentleBright technology, using professional 2-zone diffuser design to precise control of light, filter stray light effectively, reduce glare and bring comfortable and bright pure light! Recessed trimless tracker can be collocated with high flexibility, multi-module application adapt to unlimited installation scenario, which shows off fashion versatile highlight exclusive sense of life, leading contemporary fashion lighting, and decorate the beauty of modern space!

Match your interior

- Decorative metallic finishing

Mounting

- Easy to install, safe to use

Highlights

Decorative metallic finishing

Contemporary metallic finishing adds a modern touch.

Easy to install, safe to use

The Philips LED retractable ceiling fan light has passed strict safety testing and includes drop-resistant screws and

a sturdy design alongside other important safety features.

Specifications

Bulb characteristics

- Intended use: Indoor

Design and finishing

- Color: Black
- Material: Aluminium
- Housing Color: Black
- Housing Material: Aluminium

Durability

- Ambient temperature range: -20 to +40 °C

Environmental

- Disposal of the product: At the end of (economic) life, dispose the product according to local rules and do not dispose the product with regular household waste. The correct disposal of your product will help prevent potential negative consequences for the environment and human health.

Extra feature/accessory incl.

- Adjustable spot head: No
- Dimmable with remote control: No
- Remote control included: No

Guarantee

- Warranty period: 1 years

Light characteristics

- Constant light output: No
- Initial chromaticity: (NA) NA
- Light source replaceable: No
- Reflector material: -

Miscellaneous

- Especially designed for: Bedroom, Living Room, Dining Room, Kitchen, Home Office, Hallway
- Style: Contemporary
- Type: Track Lights

Other characteristics

- Lamp current: 4000 mA
- EU RoHS compliant: Yes

Power

- Input Voltage: 48

Power consumption

- Power consumption tolerance: +/-10%

Product dimensions and weight

- Net weight: 1.21 kg
- Cut out length: 100.0 cm
- Cut out width: 3.5 cm
- Height: 5.3 cm
- Length: 100 cm
- Recessed distance: 5 cm
- Width: 7.55 cm
- Overall height: 53 mm
- Overall length: 1,000 mm
- Overall width: 75.5 mm

Service

- Warranty: 3 year(s)

Technical specifications

- Lifetime up to: 25,000 hour(s)
- Total lumen output fixture: -
- Mains power: 48
- Fixture dimmable: No
- LED: No
- IP code: IP20
- Class of protection: Class III
- Driver included: No
- Flammability mark: For mounting on normally flammable surfaces
- Glow-wire test: Temperature 650 °C, duration 30 s
- Ingress protection code: IP20 | Finger-protected

- Mech. impact protection code: IK03 | 0.3 J
- Protection class IEC: Safety class III
- Suitable for random switching: No
- Dimmable: No

Packaging dimensions and weight

- EAN/UPC - product: 6922341954610
- Net weight: 1.24 kg
- Gross weight: 1.33 kg
- Height: 3.5 cm
- Length: 6 cm
- Width: 108 cm



Issue date: 2024-11-21
Version: 0.122

© 2024 Signify Holding. All rights reserved. Signify does not give any representation or warranty as to the accuracy or completeness of the information included herein and shall not be liable for any action in reliance thereon. The information presented in this document is not intended as any commercial offer and does not form part of any quotation or contract, unless otherwise agreed by Signify. Philips and the Philips Shield Emblem are registered trademarks of Koninklijke Philips N.V.

www.lighting.philips.com