

# PHILIPS

Spot 50 W PAR16  
GU10 x3

Smart LED

Dimmable smart bulb

Up to 345 lumens

Easy plug and play

Control with app or voice



8720169296725



## Smart lighting for your daily living

Put the spotlight on your comfort and well-being! These smart spots have the standard GU10 shape that you know and love, but their real glass lenses bring an extra touch of elegance. And they offer you something that's anything but standard: tunable white light for all your needs and moods. Schedule cool white light when you need to get things done, or cosy warm white light when you want to kick back and relax – whatever lets you live your best, most comfortable home life. All this plus control via your voice, the WiZ remote, or the WiZ app whether you're home or away. Philips Smart GU10 spots connect using your existing Wi-Fi, no there's no additional hardware, networking or setup required.

### Easy setup

- Easy plug and play

### Smart control

- Control from anywhere with your smartphone

### Smart features

- Automate your light with schedules
- Automate your lights. Works with Connected by WiZ products

**Light modes**

- Millions of colours and dynamic light modes
- Cool white light

**Form factor**

- Uniform light distribution

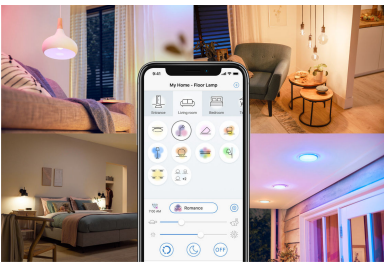
# Highlights

## Easy plug and play



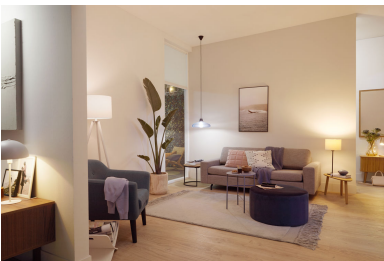
WiZ works with your existing Wi-Fi router, no additional gateway is needed. Simply plug in your new light, download the WiZ app and you're ready to go!

## Control from anywhere



Control your WiZ lights wherever you are with your smartphone. No need to worry if you've left your lights on before leaving home. The WiZ app is available for iOS and Android.

## Automate your light with schedules



Automate the lights to fit your daily or weekly routines. Schedule your light to turn on before you arrive home and keep it off when not needed.

## Automate your light



You can set the lights to turn on/off or change light mode according to motion detection. It works with all Connected by WiZ products.

## Millions of colours and dynamic light modes



Choose from a palette of millions of light colours to create an amazing atmosphere in your home. Enjoy the subtle differences that our dynamic light effects give your environment.

## Cool white light



Brighten up your home with energising cool white light. A smart light that simply adapts to your daily activities.

## Uniform light distribution



Get even light throughout the room with this light, which uniformly distributes its soft, bright light all around.

# Specifications

## Bulb characteristics

- Intended use: Indoor
- Lamp shape: PAR16
- Socket: GU10
- Technology: Smart Wi-Fi
- Type of glass: Clear
- Dimmable: Wireless Dim

## Lamp dimensions

- Height: 5.5 cm
- Weight: 0.05 kg
- Width: 5 cm

## Durability

- Average life (at 2.7 hrs/day): 15 year(s)
- Lumen maintenance factor: 70%
- Number of switch cycles: 50,000
- Nominal lifetime: 15,000 h

## Light characteristics

- Beam angle: 36 degree(s)
- Colour consistency: 6 SDCM
- Colour rendering index (CRI): 90
- Colour temperature: 2200-6500(RGB) K
- Light Colour Category: Full colour
- Nominal luminous flux: 345 lm
- Starting time: <0.5 s
- Warm-up time to 60% light: Instant full light

## Miscellaneous

- EyeComfort: Yes

## Other characteristics

- Lamp current: 40 mA
- Efficacy: 73 lm/W

## Packaging information

- EAN: 8720169296725
- EOC: 872016929672500
- Product title: PHI WFB 50W GU10 GLASS 922-65 RGB 3CT/6

## Power consumption

- Power factor: 0.48
- Voltage: AC 220-240 V
- Wattage: 4.7 W
- Wattage equivalent: 50 W
- Energy efficiency label (EEL): F

## Product dimensions and weight

- Length: 5.5 cm

## Rated values

- Rated beam angle: 36 degree(s)
- Rated lifetime: 15,000 h
- Rated luminous flux: 345 lm
- Rated peak intensity: 550 cd
- Rated power: 4.7 W

## Technical specifications

- Frequency: 50-60 Hz
- EPREL Registration Number: 1877832
- Flux measurement reference: Narrow Cone

## Packaging dimensions and weight

- EAN/UPC - product: 8720169296725
- Net weight: 0.15 kg
- Gross weight: 0.25 kg
- Height: 14.4 cm
- Length: 7.1 cm
- Width: 18.5 cm



Issue date: 2025-02-17  
Version: 0.171

© 2025 Signify Holding. All rights reserved. Signify does not give any representation or warranty as to the accuracy or completeness of the information included herein and shall not be liable for any action in reliance thereon. The information presented in this document is not intended as any commercial offer and does not form part of any quotation or contract, unless otherwise agreed by Signify. Philips and the Philips Shield Emblem are registered trademarks of Koninklijke Philips N.V.

[www.lighting.philips.com](http://www.lighting.philips.com)