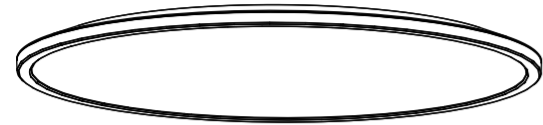
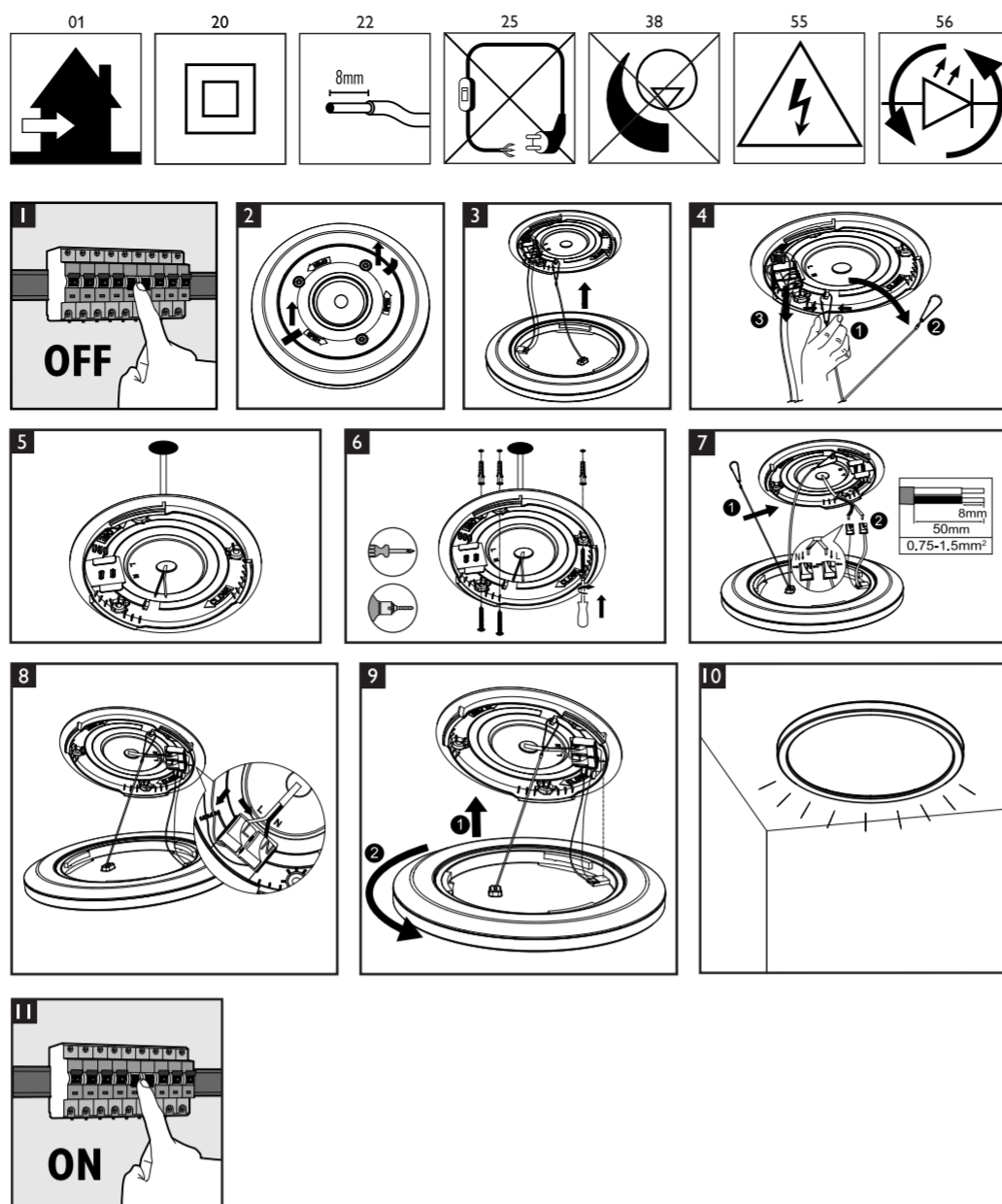


PHILIPS

9290032018  
9290032019  
9290032020  
9290032021  
9290032966



此图片不代表实际产品外观  
The picture does not represent the actual product.



Philips and the Philips Shield Emblem are registered trademarks of Koninklijke Philips N.V. and are used under licenst

Signify (China) Investment Co., Ltd.  
Building No. 9, Lane 888, Tianlin Road, Minhang District, Shanghai, China  
Postal code: 200233

Service hotline: 8008 201 201  
4009 201 201

昕诺飞(中国)投资有限公司  
中国上海市闵行区田林路888弄9号楼, 邮编: 200233  
服务热线: 8008 201 201  
4009 201 201

3241 660 11372  
Last update: 10/11/22

简体 安全说明书

本手册包含符合国际规范和安全标准的所有可能适用的带图标的参数及规格的定义。但是，并非所有定义均适用于您所购买的产品 - 有关特别适用于本产品的定义，请参阅附加手册中的图标。

- 为确保施工正确、安全安装、使用和运行，请务必仔细阅读这些说明并妥善保管以供日后参考。
- 安装、维护和修理前务必关闭电源。
- 要选择牢固安装产品所需的正确紧固件，请务必提前咨询专业人士。要考虑产品重量和安装表面材料。
- 如有疑问，请咨询专职或持证电工或联系零售店。确保始终按照相关规定安装产品。某些规定说明必须由持证电工安装电器产品 (例如 Part P for the UK, AS/NZS3000 IN for AUSTRALIA / NEW ZEALAND)。
- 务必牢固拧紧接线柱。尤其是低压接线 (12 V) 配件 (如果适用)。强烈建议定期检查并重新拧紧接线柱。
- 安装之前，请先观察接线颜色是否正确：蓝色 (N)、棕色 (L)。防护等级是否为 I。地线是否为黄色/绿色。
- 请勿将本产品安装在照明设备。请勿使用研磨剂或溶剂。避免所有电子部件接触液体。
- 将壁灯安装在儿童接触不到的地方。
- 如果将产品安装在金属表面，则必须将该表面连接至装置的保护接地导体或等电位连接导体。
- 请考虑产品的所有技术规格。确认产品识别标签上的说明图标和这些在安全说明书中所示的图标。
- 立即更换破裂或损坏的半透明罩并仅使用制造商认可的部件。
- 建议使用“飞利浦”品牌灯泡。
- 请勿将材料放在儿童接触不到的地方 (例如塑料袋)。
- 回收产品。产品均采用优质材料和组件设计制造的，可以回收利用。如果产品上贴有有线垃圾回收符号，则说明该产品符合欧洲指令 2012/19/EU。请熟悉当地针对电子和电器产品制订的指南、分类和收集机制。请遵循当地的规章制度，不要将产品与一般的生活垃圾一同弃置。正确弃置产品有助于避免对环境及人类健康造成潜在的负面影响。

注意：以下图标含义，分别解释前文中相应数字对应的安全图标：

- 01- 产品只能在室内安装。
- 20- 防护等级 II：产品或组件具有双重绝缘或加强绝缘。
- 22- 按图标所示为导线剥皮。
- 25- 产品仅适合直接连接电源。
- 38- 不允许外接调光器。
- 55- 注意：存在触电危险！应只能由制造商或其服务代理商或类似的专职人员更换本灯具中的光源。
- 56- 应只能由制造商或其服务代理商或类似的专职人员更换本灯具中的光源。设计和规格如有变更，请以实物为准。

EN SAFETY INSTRUCTIONS

This manual contains definitions of all potentially applicable iconic parameters and specifications in accordance with international codes and safety standards. However, not all definitions apply to the product you purchase - please refer to the icon in the manual for definitions that apply specifically to this product.

- In order to ensure the correct and safe installation, use and operation of the product, please follow these instructions carefully and keep them for future reference.
- Always turn off the power before installation, maintenance and repair.
- Be sure to consult a professional in advance to select the correct fasteners for a firmly installed product. Consider the weight of the product and the material of the mounting surface.
- If in doubt, please consult full-time or licensed electrician or contact retail stores. Ensure that the product is installed in accordance with relevant regulations at all times.
- Some regulations state that electrical appliances must be installed by a licensed electrician (e.g., Part P for the UK, AS/NZS3000 IN for AUSTRALIA/NEW ZEALAND).
- Be sure to tighten the wiring stud securely, especially for low voltage wiring (12V) accessories (if applicable). Regular inspection and re-tightening of wiring stud is strongly recommended.
- Before installation, please observe whether the wiring color is correct: blue (N), brown (L), the protection level is I, the ground line is yellow/green.
- Maintain indoor lighting equipment with a dry rag, do not use abrasive or solvent. Keep all electronic parts out of contact with liquids.
- Install the wall lamp out of reach of children.
- If the product is installed on a metal surface, the surface must be connected to the protective grounding conductor or equipotential connection conductor of the device.
- Always consider all technical specifications of the product. Confirm the description icon on the product identification label and the icon shown in this safety instruction.
- Replace cracked or damaged translucent lid immediately and use only parts approved by manufacturer.
- Keep packaging materials out of reach of children (e.g., plastic bags).
- Recycle products. The products are designed and manufactured with high quality materials and components and can be recycled. If product E has a wheel-bin symbol on it, it indicates that the product complies with the European directive 2012/19 / EU. Please familiarize yourself with the local guidelines, classification and collection mechanisms for electronic and electrical products. Please follow the local rules and regulations and do not dispose of old products with ordinary household waste. Proper disposal of products helps to avoid potential negative impacts on the environment and human health.

Note: the following are the meanings of the ICONS, respectively explaining the security ICONS corresponding to the corresponding Numbers in the preceding text:

- 01- product can only be installed indoors
- 20- Protection class II: the product or component is provided with double or reinforced insulation
- 22- peel the wire as shown in the icon
- 25- the product is only suitable for direct connection to power supply.
- 38- external dimmers are not allowed.
- 55- caution: electric shock hazard! The light source in this luminaire shall be replaced only by the manufacturer or its service agent or similar professional personnel
- 56- the light source in this luminaire shall be replaced only by the manufacturer or its service agent or similar professional personnel.

If there is any change in design and technical specification, please refer to the actual product.

© 2022 Signify Holding  
@ignify

产品中有害物质的名称及含量

部件名称	有害物质					
	铅 (Pb)	汞 (Hg)	镉 (Cd)	六价铬 (Cr (VI))	多溴联苯 (PBB)	多溴二苯醚 (PBDE)
光源	○	○	○	○	○	○
LED控制装置	×	○	○	○	○	○
外壳	○	○	○	○	○	○
面罩	○	○	○	○	○	○

本表格依据 SJ/T 11364 的规定编制。

○: 表示该有害物质在该部件所有均质材料中的含量均在 GB/T 26572 规定的限量要求以下。  
×: 表示该有害物质至少在该部件的某一均质材料中的含量超出 GB/T 26572 规定的限量要求。

昕诺飞中国服务热线：  
8008201201 / 4009201201

客户网上问询地址：  
www.philips.com/lighting

昕诺飞(中国)投资有限公司



SIGNIFY	
Brand	PHILIPS
Product Family	ED LUM CEILING
Shape	NA
Wattage	N/A
Template Ref.	N/A
SGS number	7161764
12-NC.NBR	324166011372
Masterdrawing	N/A
CRC Ref.	
Barcode No.	6947830499366
Operator(s)	Polly.pan
VERSION No.	v1
Date in	
Date amended	20221130
Black	Diecut
Date Check	
<input type="checkbox"/>	Check briefing Traffic
Artwork document	
<input type="checkbox"/>	Legend
<input type="checkbox"/>	12NC
<input type="checkbox"/>	Barcode
<input type="checkbox"/>	Diecut
<input type="checkbox"/>	Number of colors
<input type="checkbox"/>	Trapping/Bleed
<input type="checkbox"/>	Images hires
<input type="checkbox"/>	Jobsizes
Approval	
<input type="checkbox"/>	QC Lithographer SGS Shanghai Production
<input type="checkbox"/>	Product Manager fanny.hsu@signify.com
<input type="checkbox"/>	Traffic Manager Jenny Zhang