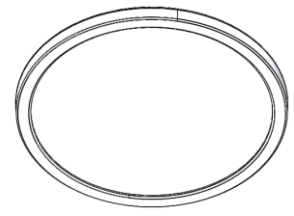


Dismantling Recommendation on Disposal at End of Life

•Composition Explanation –Ceiling Type B



Plastic part	Electrical part	Metal part
Housing 	PCBA 	Safety cable
Optical parts 	Driver PCB 	Screws
Others: -Deco rim -Terminal block , -Connector . -Rubbers -Other plastic parts	Other small electrical part	Other small metal part

Dismantling

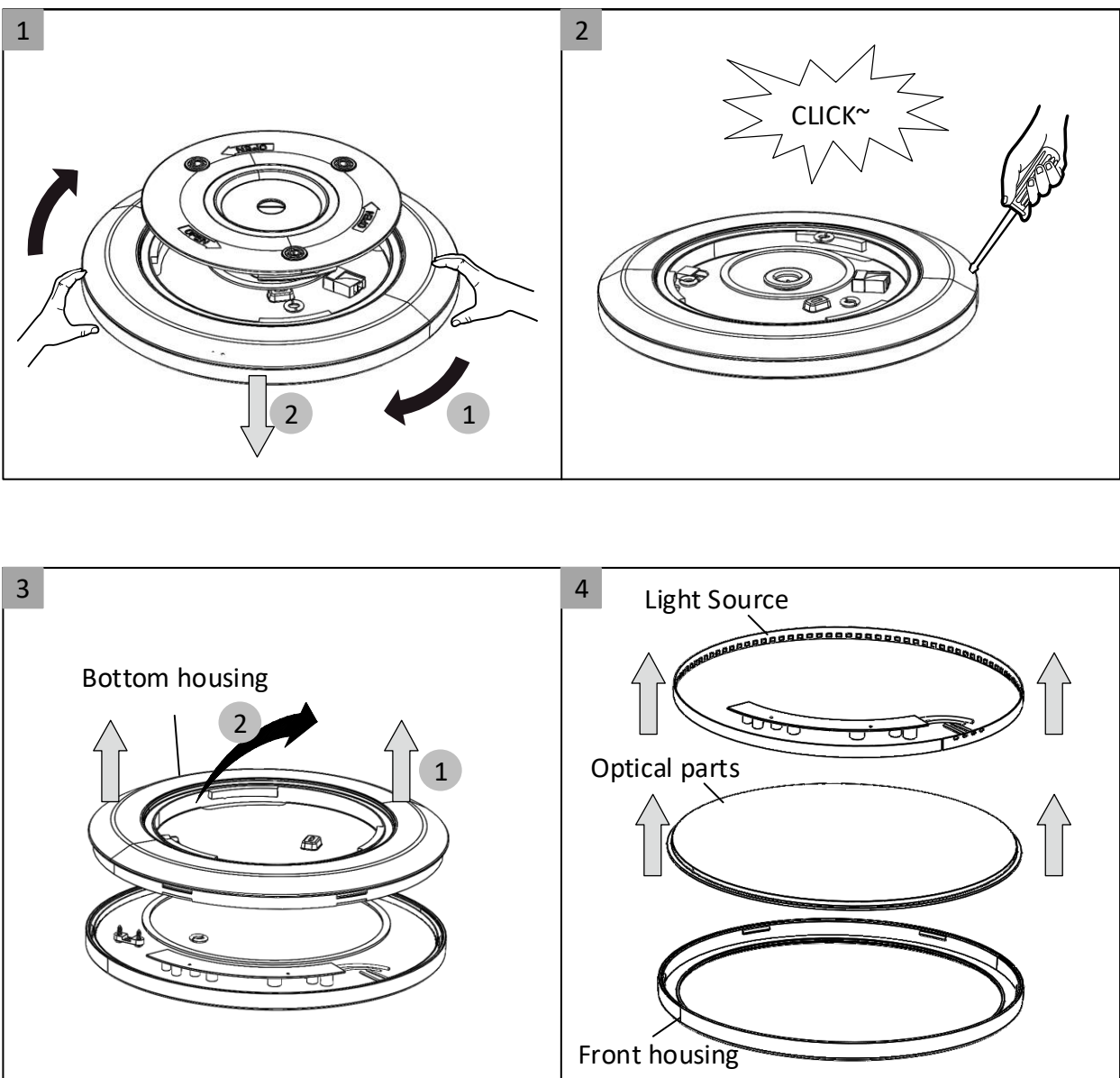
- Steps: refer to the following disassembly instruction
- Type: without permanent damage

Recommendation on disposal

- Plastic part :reuse and recycling
- Electrical part :incineration and disposal
- Metal part :recycling

Philips and the Philips shield Emblem are registered trademarks of Koninklijke Philips N.V

•The Steps to Remove the Components



Philips and the Philips shield Emblem are registered trademarks of Koninklijke Philips N.V