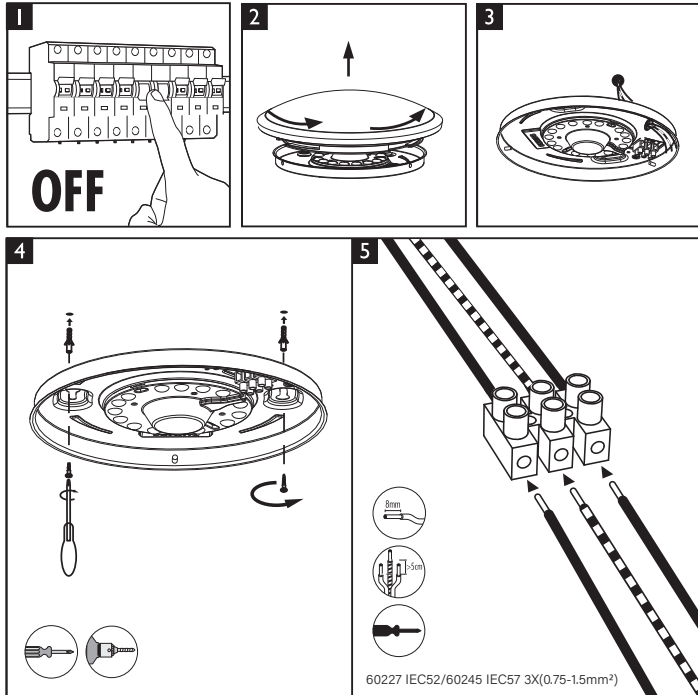
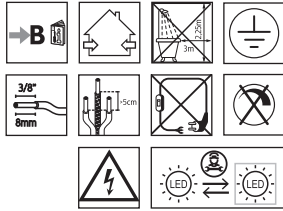


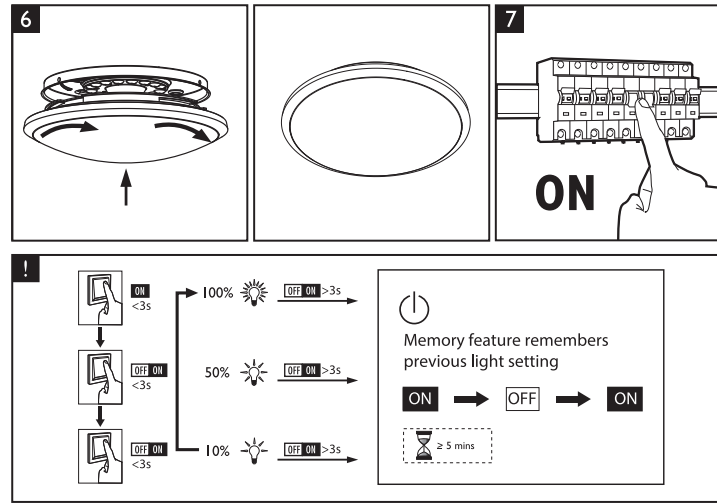
PHILIPS

Cavalal

front



back



F 9290026680
9290046444

Philips and the Philips shield emblem are registered trademarks of Koninklijke Philips N.V.

Signify
I.B.R.S. / C.C.R.I. Numéro 10461
5600 VB Eindhoven, the Netherlands
www.philips.com/lighting

© 2024 Signify Holding
©signify

Signify Commercial UK Limited
Unit 3, Guildford Business Park,
Guildford, Surrey, GU2 8XG, UK



3241 657 69583
Last update: 07/12/24

size: 105mmx148mm

SIGNIFY

Brand PHILIPS
Product Family LED
Shape N/A
Wattage NA
Template Ref. N/A
SGS number 6400829
12-NC.NBR 3241 657 69583
Masterdrawing N/A
CRC Ref. _____

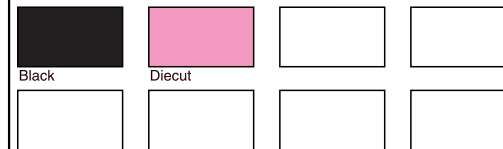
Barcode No. N/A

Operator(s) Tospo

VERSION No. **v3**

Date in 20171110

Date amended 20240712



Date Check _____

Check briefing Traffic

Artwork document

Legend Number of colors

12NC Trapping/Bleed

Barcode Images hires

Diecut Jobsizes

Approval

QC Lithographer SGS Shanghai Production

Product Manager fanny.hsu@signify.com

Traffic Manager Sadie Shen

DISCLAIMER:

Please note that the original Artwork was not built by SGS. SGS only made change on specific content as listed in below. Therefore, SGS does not hold any responsibility for other content in this file. If you have any questions regarding the artwork, please contact with Philips Lighting PCC accordingly.

| Author/作者 | Date/日期 | Revision description/更改描述 |
|-----------|------------|----------------------------|
| Winter | 2021/01/27 | add F icon |
| Winter | 2021/05/06 | follow mail to change icon |
| Tospo | 2024/07/12 | add Model name |