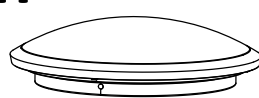
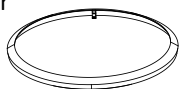

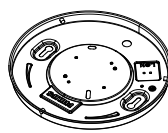




Dismantling Recommendation on Disposal at End of Life



•Composition Explanation –Ceiling CL255 12W 2700K white IP20 P
 Ceiling CL255 12W 2700K black IP20 P

Plastic part	Electrical part	Metal part
Cover 	PCB 	Body 
Deco cover 		
Lens 		
Other small plastic part -Terminal block -Connector -Dirver box	Other small electrial part	Other small metal part -Screws

Dismantling

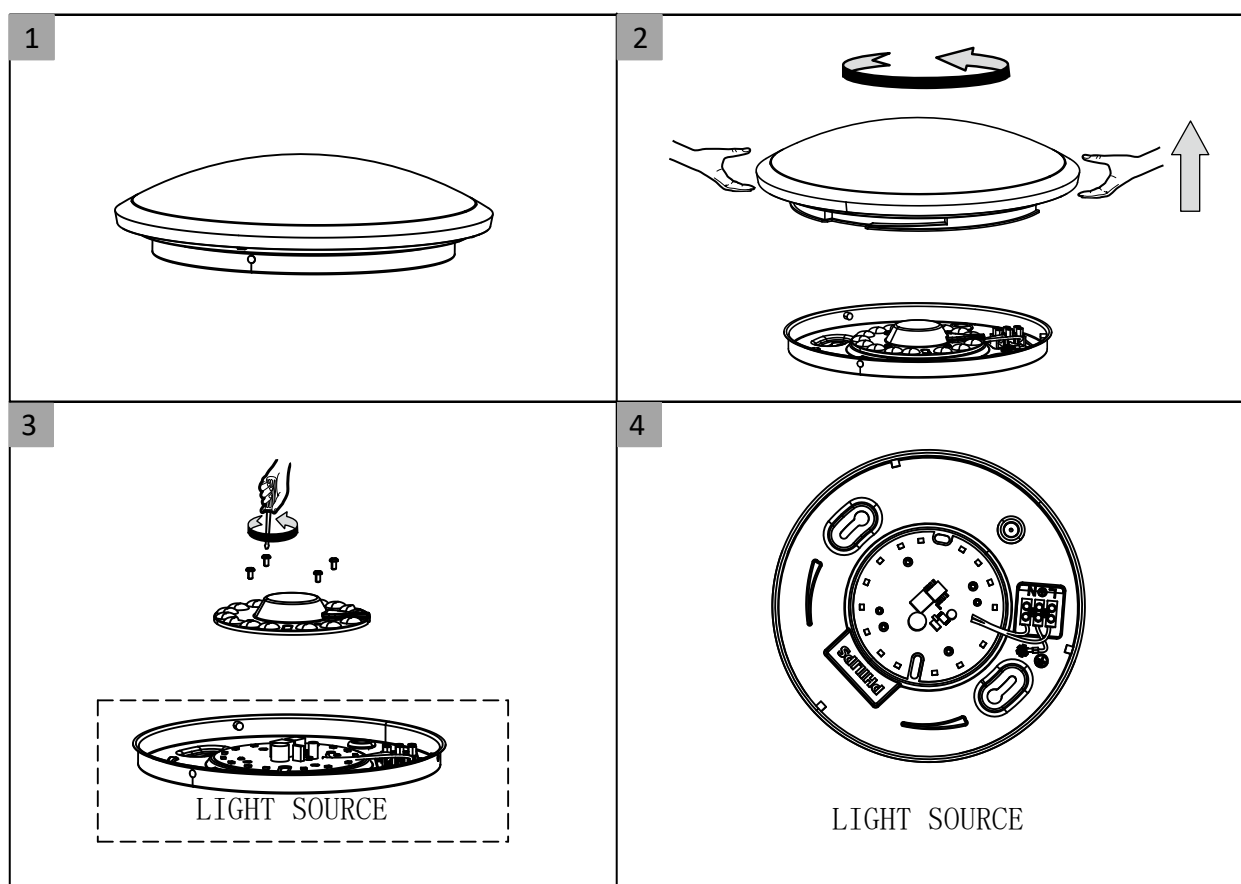
- Steps: refer to disassembly instruction
- Type: without permanent damage

Recommendation on disposal

- Plastic part :reuse and recycling
- Electrical part :incineration and disposal
- Metal part :recycling

Philips and the Philips shield Emblem are registered trademarks of Koninklijke Philips N.V

•The Steps to Remove the Components



Philips and the Philips shield Emblem are registered trademarks of Koninklijke Philips N.V