

User manual

“Configurability
enables flexibility
and differentiation”

1 Table of contents

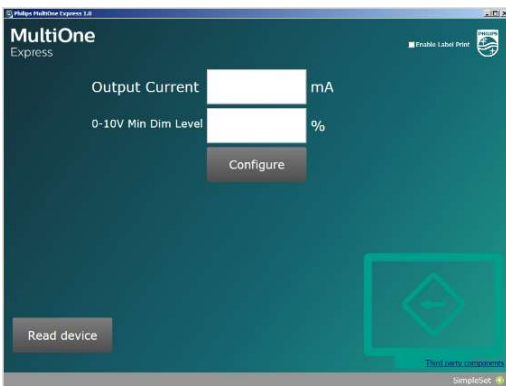
1	Table of Contents.....	2
2	Introduction.....	3
3	Requirements.....	4
4	How to Configure a Driver.....	5
5	How to Read a Driver.....	8
6	How to Print a Label.....	10
7	Troubleshooting.....	11
8	Copyright.....	14
9	Disclaimer.....	15
10	Limitations of Damages.....	16

2 Introduction

The MultiOne Express system is a self-contained windows-based system which can be used to manually and quickly configure SimpleSet drivers without the need of feature file.

MultiOne Express supports Adjustable Output Current and Minimum Dim Level configurability, and Label Print capabilities.

System Components:



MultiOne Express Application



SimpleSet Tool



SimpleSet Driver



Optional Label Printer

3 Requirements

Minimum Requirements:

- Windows 7 SP1, 8, 8.1 or 10 based system
- USB 2.0 port
- At least 45 MB of free disk space
- Microsoft .NET Framework 4.6.1
- Philips LCN9620 (929000999506) or LCN9630 (929001546306) Configuration Tools



Philips LCN9620 Flatbed

- Approximately 1" NFC range
- Easily mountable
- Designed for high volume environments



Philips LCN9630 Antenna

- Approximately 3" NFC range
- Flexible antenna cable which can be aligned to the target driver for optimal configuration

Label Print Requirements:

- USB 2.0 port
- Minimum 2" x 3/4" label size
- Zebra GX430T or Dymo 450 Turbo printer



Zebra GX430T Printer

- Mid-range cost
- High performance & speed
- High volume environments



Dymo 450 Turbo Printer

- Low cost
- Low volume environments

4 How to Configure a Driver

1. Connect the Configuration Tool to the USB port

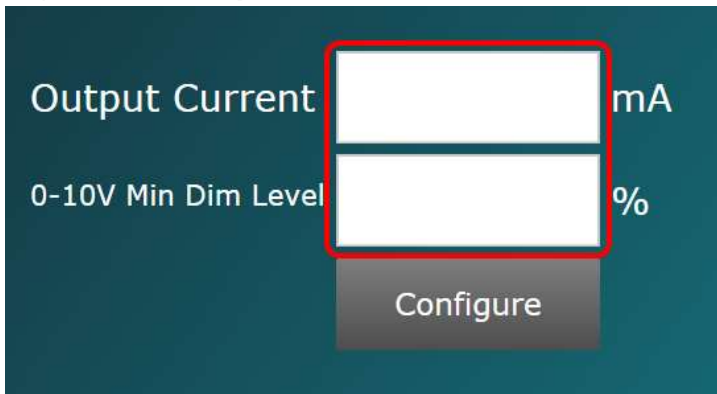


Note: When using the LCN9630 Antenna tool, the tool's DC Power Adapter must be connected

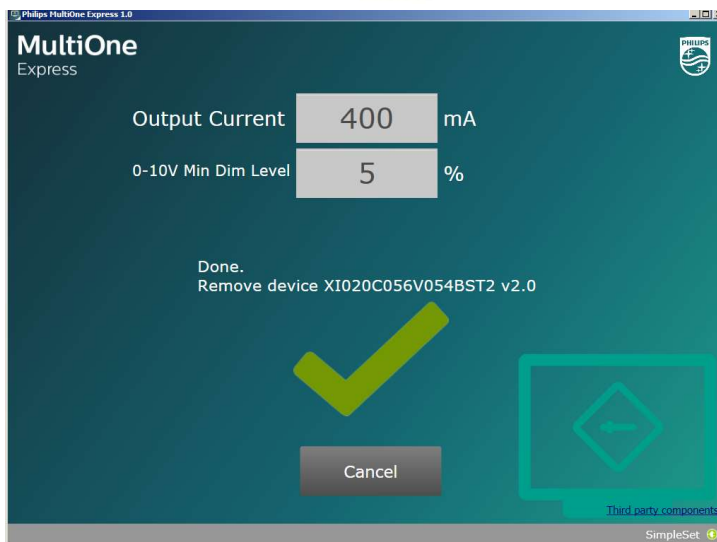
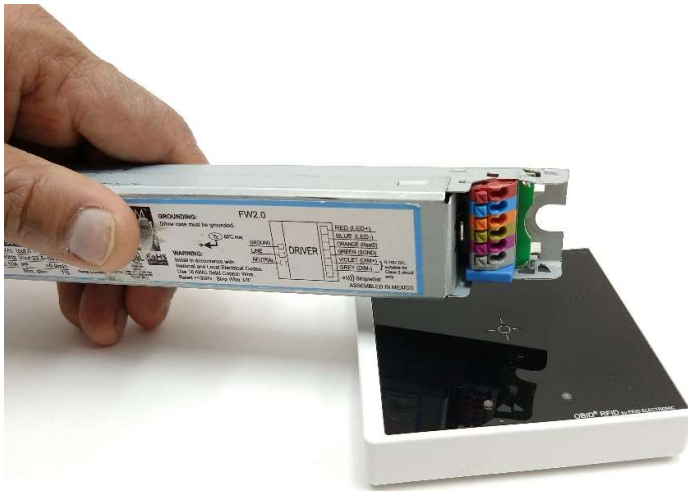
2. Launch MultiOne Express
3. Verify SimpleSet Configuration connectivity



4. Populate the **Output Current** and or **0-10V Min Dim** fields with desired values



5. Select **Configure** to initiate the configuration process
6. Align the driver over the configuration tool until the **Result** is displayed



7. Remove the configured driver from configuration tool and repeat step 6 until all target drivers are configured

8. To end the configuration process, or populate new values, select **Cancel**

5 How to Read a Driver

1. Connect the Configuration Tool to the USB port



Note: When using the LCN9630 Antenna tool, the tool's DC Power Adapter must be connected

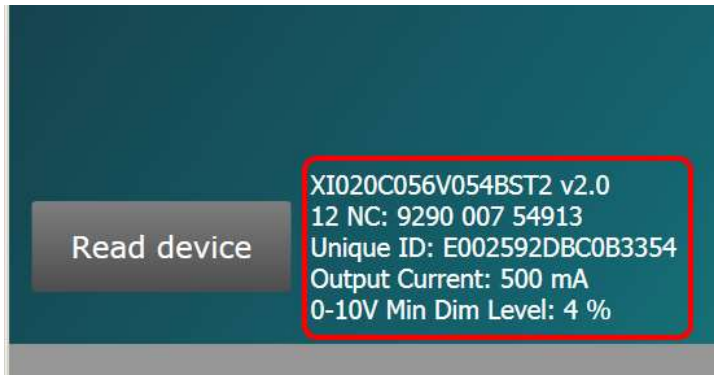
2. Launch MultiOne Express

Note: The configuration tool must be connected prior to launching the application

3. Verify SimpleSet Configuration Tool connectivity



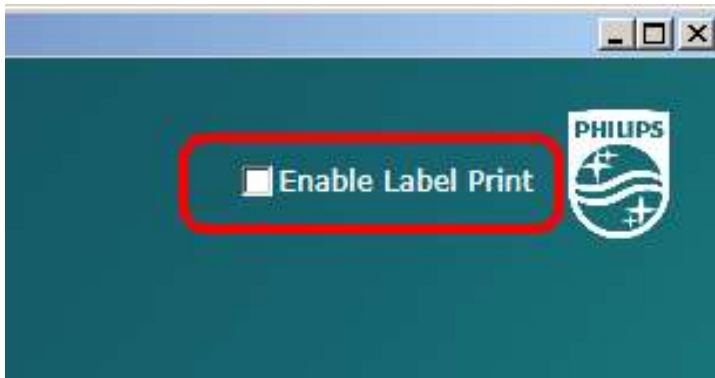
4. Select **Read device**
5. Align the driver over the configuration tool until the driver is fully read



Note: The driver displayed data will be cleared when a configuration process is initiated

6 How to Print a Label:

1. Connect a compatible USB Printer to the USB port
2. Launch MultiOne Express
3. Select **Enable Label Print**



4. Configure the target driver (see section 4)
5. A label will be printed once a driver is successfully configured



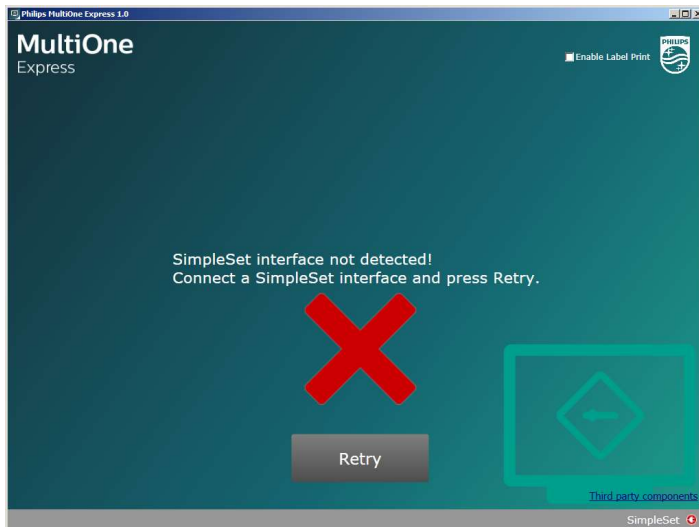
Note: Failures, and or, errors will not generate a printed label

Labels will be printed with the following fields:

- Output Current Value (if populated)
- 0-10V Min Dim Level (if populated)
- Date

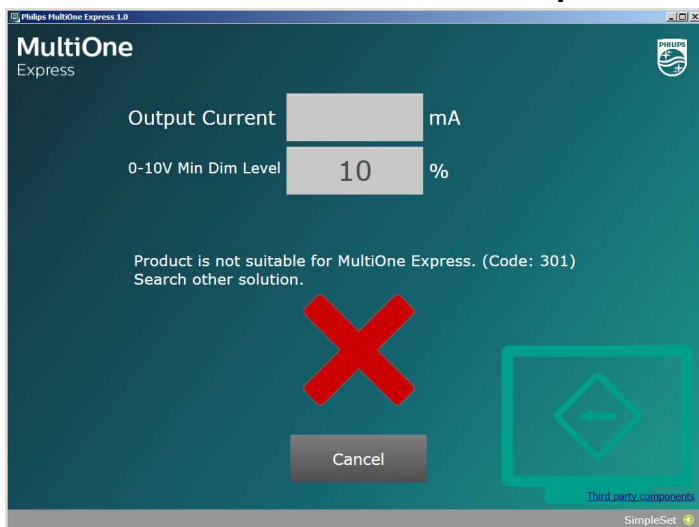
7 Troubleshooting

1. SimpleSet Interface not detected



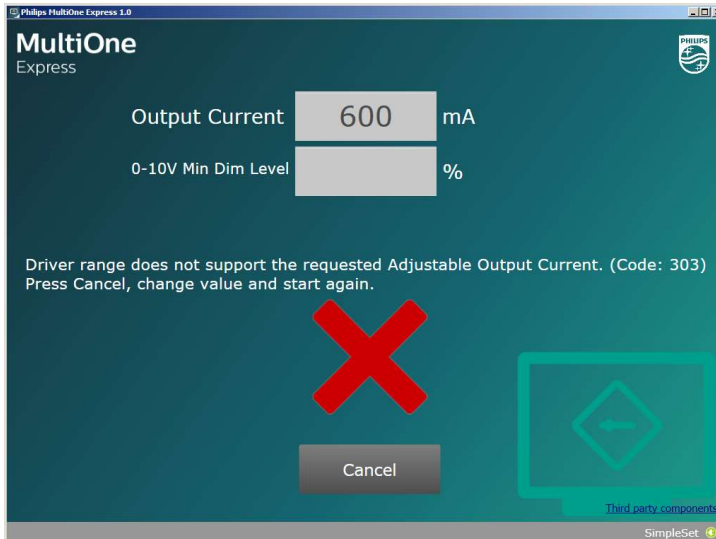
- The Configuration Tool must be connected prior to launching the application
- Shutdown the application, connect Configuration Tool and relaunch application
- If unsuccessful, reconnected the Configuration Tool on an alternate USB port
- If using the LCN9630 Antenna Tool, confirm that the DC power supply is connected

2. Product is not suitable for MultiOne Express



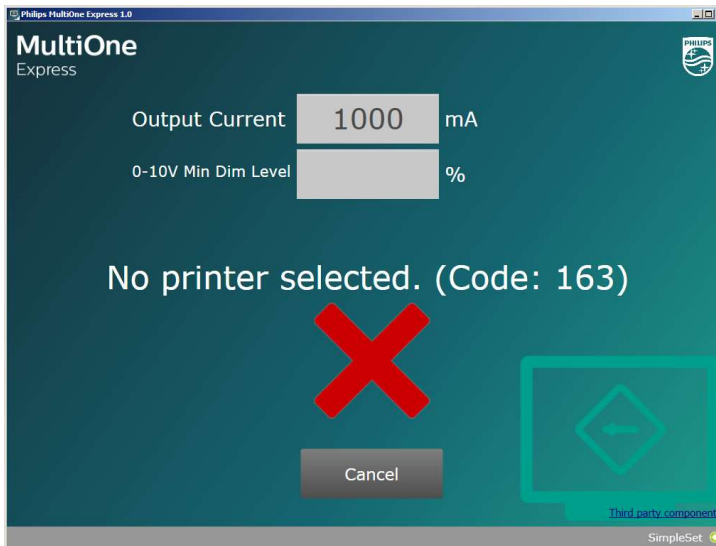
- The target driver is not compatible with MultiOne Express

3. Driver range does not support the requested Adjustable Output Current or Driver range does not support the requested 0-10v Min Dim Level



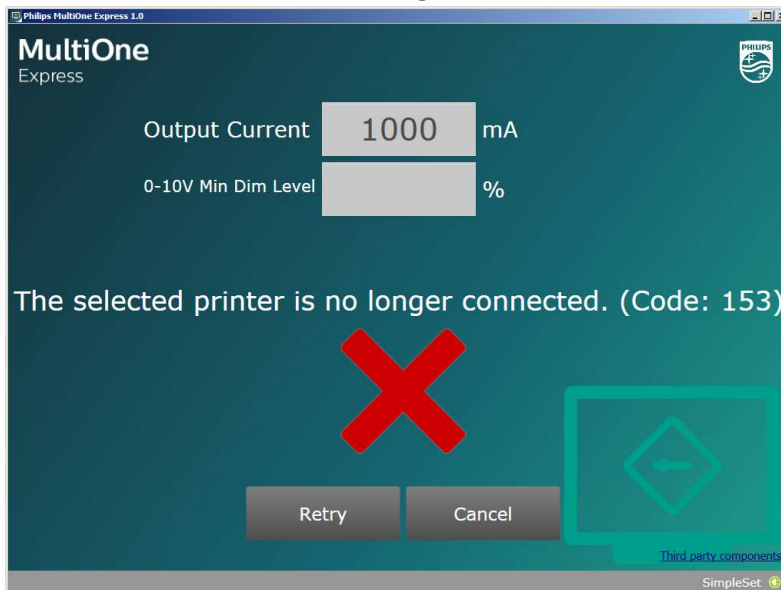
a. The populated Output Current value is not compatible with the target driver

4. No printer selected



a. A compatible printer must be connected, and appropriate drivers loaded

5. The selected printer is no longer connected



- a. Verify that a compatible printer is properly connected
- b. Verify that a compatible printer is powered and online

8 Copyright

Copyright © 2018 by Philips Lighting B.V.

All rights reserved. No part of this publication may be reproduced, transmitted, transcribed, stored in a retrieval system or translated into any language or computer language, in any form or by any means, electronic, mechanical, magnetic, optical, chemical, manual or otherwise, without prior written permission from Philips. Brands and product names are trademarks or registered trademarks of their respective companies.

9 Disclaimer

Philips makes no warranty of any kind with regard to this material, including, but not limited to, the implied warranties of merchantability and fitness for a particular purpose. Philips assumes no responsibility for any error that may appear in this document. Philips makes no commitment to update nor to keep current the information contained in this document.

10 Limitations of damages

The vendor will not be liable for any indirect, special, incidental or consequential damages (including damages for loss of business, loss of profits, or the like), whether based on breach of contract, tort (including negligence), product liability or otherwise, even if the vendor or its representatives have been advised of the possibility of such damages and even if a remedy set forth herein is found to have failed its essential purpose.