

PHILIPS

LED lamps

MainsFit CorePro (Type-B)



Select your color

Philips TLED MainsFit (Type B) color selectable lamps has a switch to select between 5 different CCTs from 3000K to 6500K. Unsure of the color that will fit your application best? No need to worry with Philips TLED MainsFit (Type B) color selectable lamps offering superior color consistency and color accuracy.

Benefits

- **One lamp, 5 colors**
Use the switch to select from 3000K, 3500K, 4000K, 5000K or 6500K
- **Color consistency and accuracy**
Within 5 SDCM from the ANSI specification and along the back body line
- **Double-ended Type B**
Eliminate the ballast with simple installation using shunted or non-shunted sockets¹
- **Lifetime Delivered**
Average life rating of 50,000 hours²

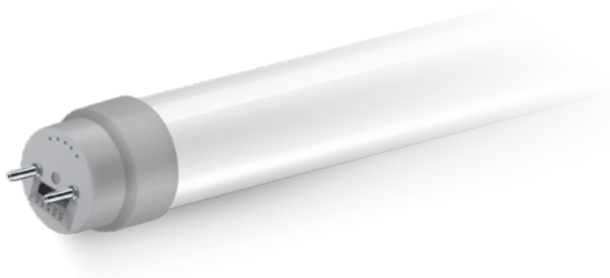
Features

- One lamp to replace five.
Reduce your inventory while providing more to your customers.
- Light quality and performance predictability offers consistent light output with no flicker
- Proven product history from a company with a long history of innovation and reliability in the lighting industry

1. For proper operation shunting of un-shunted sockets is required. See installation guide for details

2. LED lifetime means the length of time (in hours) until half of the LED light sources maintain at least 70% of their initial lumen output (B50, L70).

Philips LED MainsFit CorePro TLED (Type-B) lamps



Ordering, electrical and technical data (Subject to change without notice)



Product No. (6nc)	Model No. (12nc)	Description	Base	Watts (W)	Lumens (lm)	Volts (V)	CRI (min)	CCT ¹ (K)	Lifetime ² (hrs)	MOL (in)	Beam Angle	Pkg Qty
4ft CorePro T8 Glass												
579672	929003540104	14.5T8/COR/48-5CCT/MF18/G/DIM 25/1	G13	14.5	1800	120-277	82	3000/3500/	50,000	48	240	25
589804	929003815504	43T8/COR/96-5CCT/MF52LS/G/FA8-R17D 10/1	FA8/R17d	26/34/43	3400/4300/5200	120-277	82	4000/5000/6500	50,000	96	240	10

- CCT user selectable via on lamp DIP switch.
- Tested to B50 L70 requirement. LED lifetime means the length of time (in hours) until half of the LED light sources maintain at least 70% of their initial lumen output (B50, L70).

For more information on Philips' limited warranty please visit www.philips.com/warranties.



© 2024 Signify Holding. All rights reserved. The information provided herein is subject to change, without notice. Signify does not give any representation or warranty as to the accuracy or completeness of the information included herein and shall not be liable for any action in reliance thereon. The information presented in this document is not intended as any commercial offer and does not form part of any quotation or contract, unless otherwise agreed by Signify.



Signify North America Corp.
400 Crossing Boulevard,
Bridgewater, NJ 08807
Telephone 800-555-0050

Signify Canada Ltd.
281 Hillmount Road,
Markham, ON, Canada L6C 2S3
Telephone 800-668-9008

Philips and the Philips Shield Emblem are registered trademarks of Koninklijke Philips N.V. All other trademarks are owned by Signify Holding or their respective owners.