

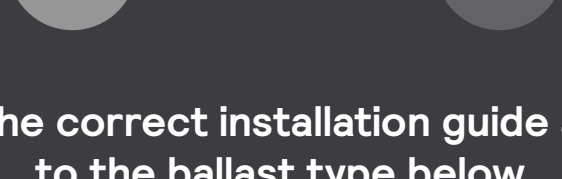


Quick installation guide Philips LED tubes

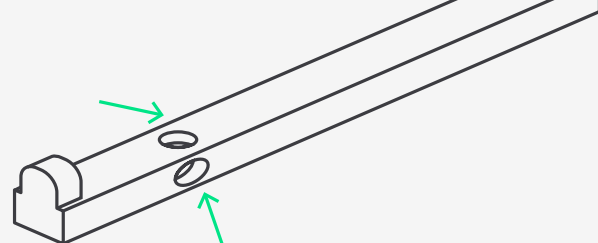
LED tubes provide the fastest and simplest way to convert existing luminaires to LED technology. The installation is 100% safe and totally unproblematic, due to lamp-for-lamp replacement.

Use our quick guides below for instant guidance on how to install a LED tube on which existing ballast.

Which type of LED tube do you need?



Choose the correct installation guide according to the ballast type below.

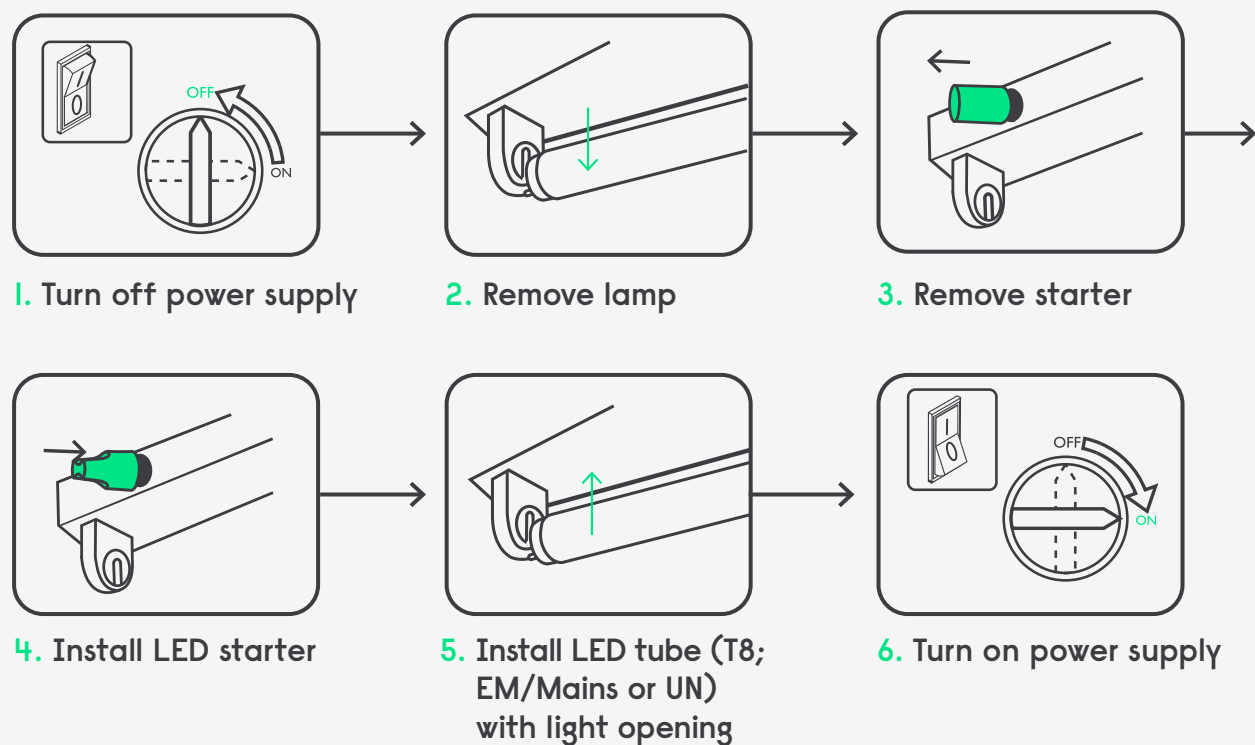


Does your luminaire have a starter?

Yes No

T8

Installation instructions for Electro-magnetic Ballast (EM)

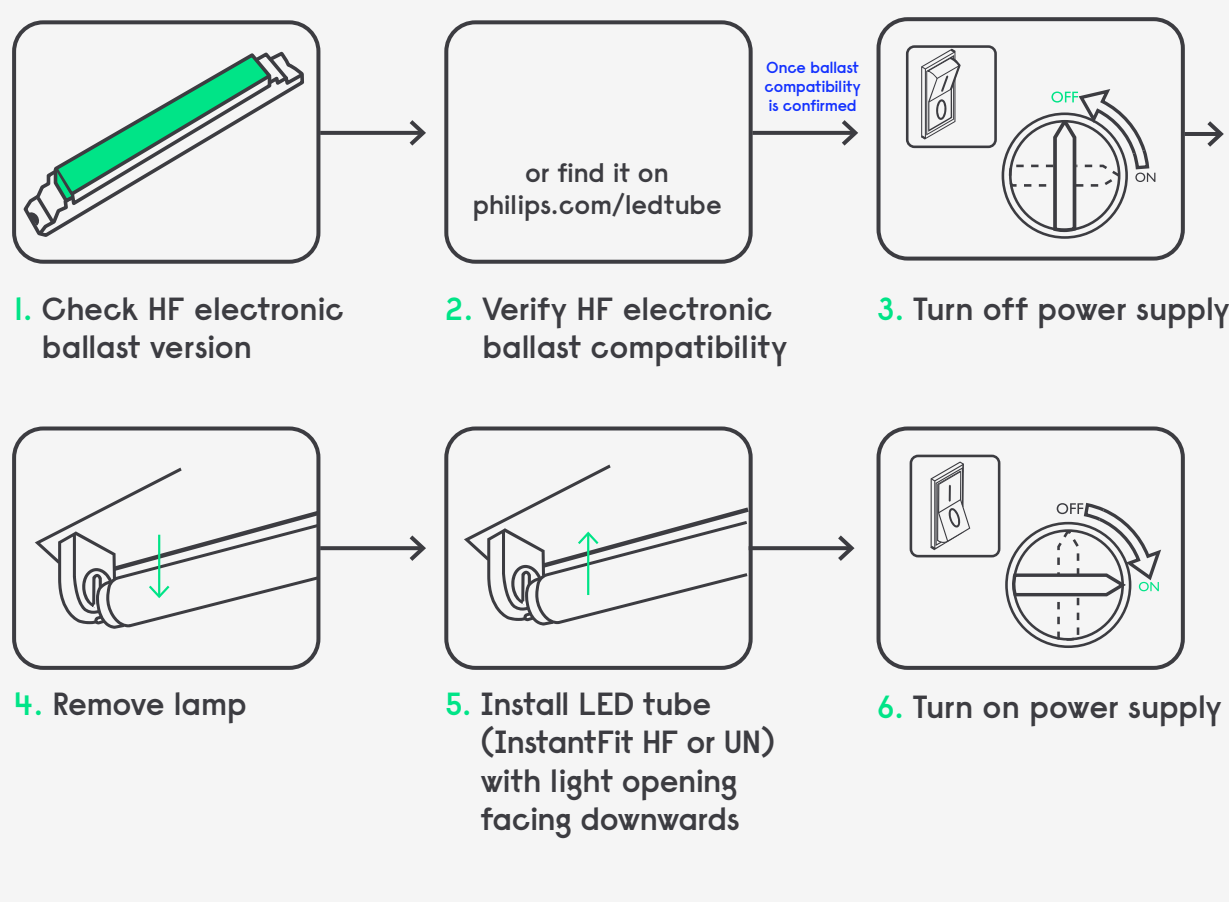


It is recommended to remove the compensation capacitor to improve the power factor.

T8

T5

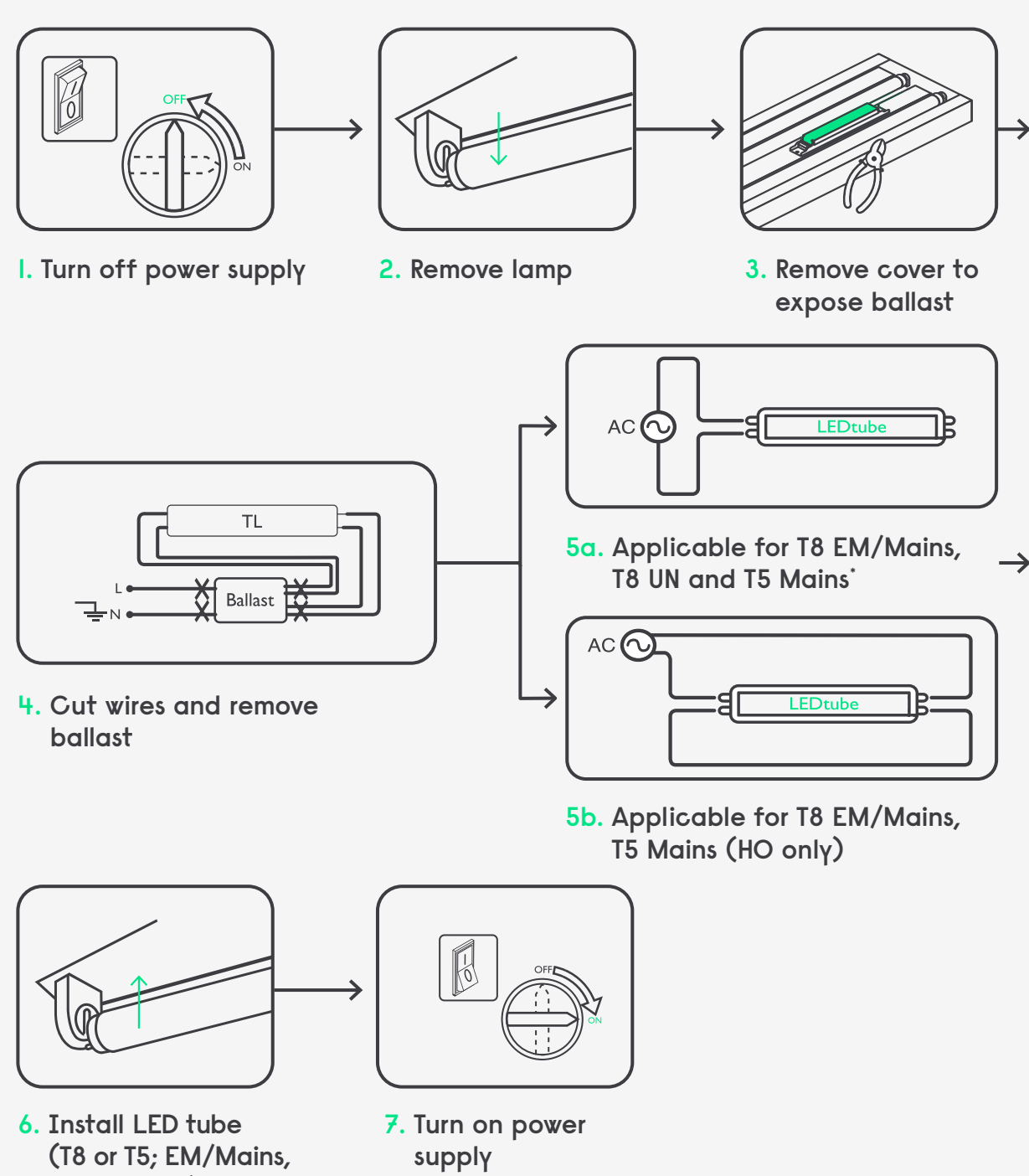
Installation instructions for High-frequency Electronic Ballast (HF)



T8

T5

Installation instructions for direct mains connection



*This method is not permitted in Switzerland

There's a Philips LED tube for every application

PHILIPS



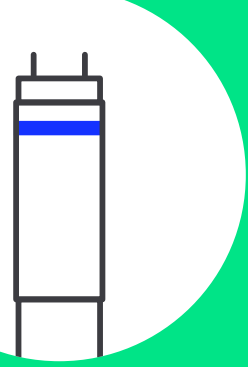
Simplicity and ultra-efficiency make Philips LED tubes the quickest and easiest way to upgrade to LED for immediate energy savings over a long and reliable lifetime.

Finding the right LED tubes for different plans, needs and budgets is easy with the extensive Philips portfolio. It ensures that you always have a quality solution at the price you want.

philips.com/ledtube

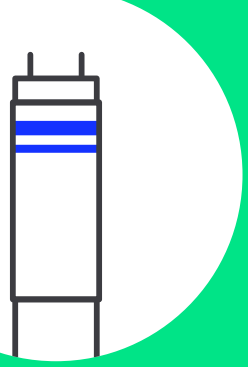
Pro tip for choosing a Philips LED tube: Watch out for the rings!

T8



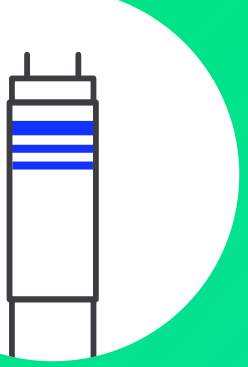
One ring: EM/Mains (Electro-magnetic ballast or direct mains)

T8



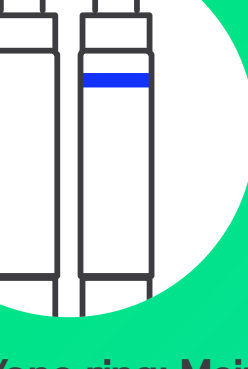
Two rings: HF (High-frequency Electronic ballast)

T8



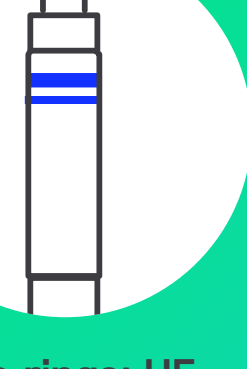
Three rings: UN (Universal – valid for EM/HF/Mains)

T5



No ring/one ring: Mains (Direct mains)

T5



Two rings: HF (High-frequency Electronic ballast)

Find everything you need to work faster, better, and smoother on

signify.com/installers