

PHILIPS

LEDtubes



Trade in for Ultra Efficient LEDtubes

Get up to 55% discount instantly on selected Philips LEDtubes when you trade-in your old fluorescent tubes.



7.5x* longer life span for LED



70%* energy cost savings



70%* carbon savings, equivalent to CO₂ absorbed by 4,699 trees over product lifetime!



5.2* months payback period



*Refer to footnote on Page 5.

Towards a circular economy in lighting

Today's linear production and business models consume the resources of 1.8 Earths, much more than what is available to us¹. But there is a solution: transitioning to a circular economy. With sharing, leasing, reusing, repairing, and recycling existing materials at its core, a circular economy helps us retain value and minimize waste.

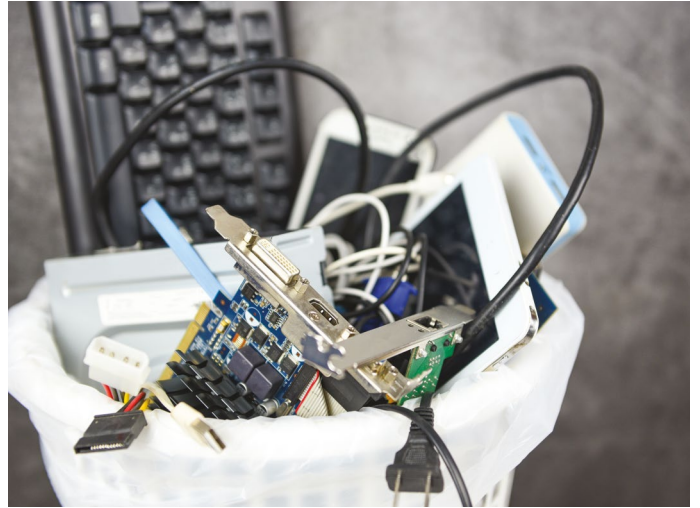
At Signify, sustainability is key to everything we do. We are committed to contributing to the transition to a circular economy and achieving Sustainable Development Goal 12: Responsible consumption and production.

A shift towards a sustainable circular economy is all about creating and preserving value. Our actions range from creating new products to delivering services that fit into the circular economy ecosystem to minimize waste.



What is E-Waste?

E-waste is electrical and electronic equipment of any kind that has been discarded. It includes practically anything powered by an electrical source (e.g. from a power socket or a battery), such as lamps and lighting devices.



Why is it a concern?

Singapore generates more than 60,000 tonnes of electrical and electronic waste (e-waste) each year, and the rate of e-waste generation is expected to increase in tandem with economic growth and the prevalence of electrical and electronic equipment among consumers and businesses. E-waste contains valuable resources that can be extracted through proper handling and treatment processes. It also contains small amounts of hazardous substances that may harm the environment and our health, if improperly disposed of.

How does recycling help?

Recycling e-waste protects human and environmental health.

Improper disposal of e-waste leads to environmental pollution and this may in turn harm human health. The best way to treat e-waste is to recycle it properly. E-waste comprises many different components and requires specialised equipment to dismantle, shred, process and extract the constituent materials that can then be turned into new products. This has to be performed within a controlled system to prevent pollution and ensure workplace safety and health.

Recycling e-waste helps to conserve our earth's precious natural resources.

Recycled material is used to make new products. This reduces the need to mine limited raw materials from the earth. Reducing the need for mining also lowers pollution, as the process of mining has an impact on our environment.

¹ Circular economy | Signify Company Website

***Alba is the e-waste collector for our trade-in programme.
Visit alba-ewaste.sg for more details.***

Realize ultra energy savings



Introducing the Philips MASTER LEDtube Ultra Efficient T8: our most energy-efficient LEDtube yet



Are you worried about their energy costs?

With energy costs going through the roof, many companies are more aware of their energy consumption than ever. Lighting on average represents up to 25% of electricity consumption in buildings, so there is much to gain.¹ Did you know there is great potential to save energy, even if you already have LED lights?

With the new Philips Ultra Efficient LEDtube you have the perfect retrofit lamp to help you save energy and money with high-quality, long-lasting and Ultra Energy-Efficient LED.

Unbeatable arguments

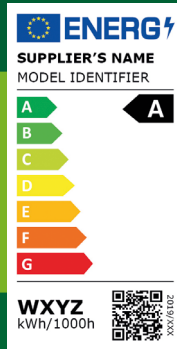
- Saves up to 70% in energy costs compared to fluorescent tubes
- Ultra long lifetime of 100,000 hours
- Less than 6 months payback time when upgrading from fluorescent tubes
- 5-year warranty

¹According to Signify modeling and market intelligence data.

²According to the updated European Energy Labelling Regulation (09/2021).



A-class rating² for ultra energy savings



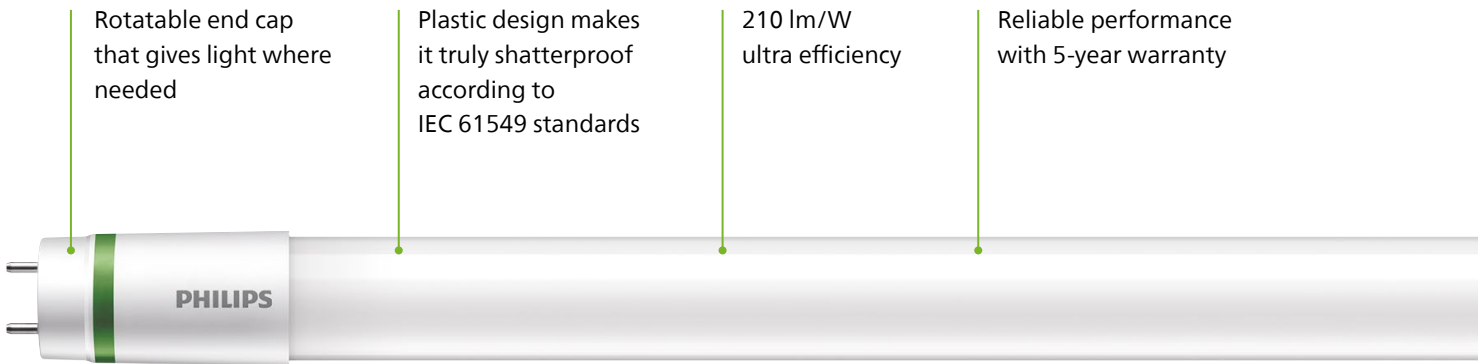
Promotion details^A

Product Model	Lifetime (hours)	Energy Efficacy (lm/W)	Suggested Retail Price	Promo Price (without Trade-in)	Promo Price (with Trade-in)
MAS LEDtube 1200mm UE 11.9W T8	100,000	210	\$50.00	\$33.30	\$28.00

^ARefer to Terms and Conditions overleaf.

Philips Master LEDtube Ultra Efficient T8

All the benefits of LED lighting and more



*According to the updated European Energy Labelling Regulation (09/2021).

Cost and CO₂ savings right from the start

When updating from fluorescent tubes, you can expect a full return on investment in only 5.2 months. A typical small carpark will save more than SGD8,000 by replacing 100 units of 36W fluorescent tubes with 11.9W Ultra Efficient Master LEDtubes.¹

	Fluorescent TL-D tube 1200mm	Philips Master LEDTube Ultra Efficient 1200mm
Lifetime	13,000 hours	100,000 hours
Lamp Wattage	36W	11.9W
Total savings per year ¹	With Trade-in Promo	
Payback time		\$8,048
		5.2 months

Number of lamps	100	Burning hours per year	8,760 ²	Energy costs	\$0.30/kWh
-----------------	-----	------------------------	--------------------	--------------	------------



Compared to a fluorescent tube, the Philips MASTER LEDtube UE can reduce CO₂ emissions by up to 103,386 kg over its lifetime – equivalent to the emissions absorbed by more than 4,699 trees.³

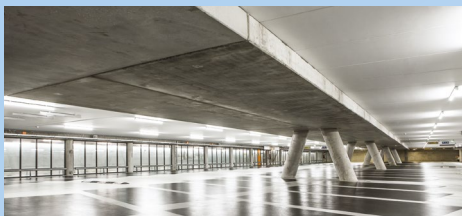
¹ Calculation for a typical carpark based on 100 x 36W fluorescent lamps with a lifetime of 13,000 hours vs 100 x 11.9W Ultra Efficient A-class LEDtubes with a lifetime of 100,000 hours; SGD30 cent energy cost/hour; SGD10 replacement cost per lamp; 8,760 burning hours per year.

² Energy use. Based on 24 hrs burning per day, 365 days per year.

³ Based on multiple scientific literature, an average fully grown tree can absorb 22 kg CO₂ per year.

Experience long-lasting benefits

Real professionals choose the new
Philips MASTER LEDtube T8



The new Philips MASTER LEDtube T8 is the right choice for all professionals, who want to easily and cost-effectively upgrade existing, conventional lighting tubes with LEDtubes. Low energy consumption and little maintenance make it the perfect choice for all generic lighting applications!

Key features and benefits

- Uniform light effect
- Robust construction
- Fits in well with conventional technology
- Fast and easy installation
- High level energy efficiency

Benefits in the spotlight

- Extremely cost-effective – LEDtubes normally pay for themselves within the first year
- Up to 65% more energy efficiency than conventional TL-D (fluorescent) lighting tubes
- Up to 3x longer lasting performance than conventional TL-D (fluorescent) lighting tubes

Applications

- Offices, carparks
- Industrial facilities and warehouses



Promotion details[^]

Product Model	Lifetime (hours)	Energy Efficacy (lm/W)	Suggested Retail Price	Promo Price (without Trade-in)	Promo Price (with Trade-in)
Sensor LEDtube 1200mm 16W T8	30,000	113	\$30.00	\$16.80	\$15.00
MAS LEDtube 1200mm HO 14W T8	60,000	142 - 150	\$23.90	\$13.30	\$11.00
MAS LEDtube 600mm HO 8W T8	60,000	125 - 131	\$20.90	\$11.70	\$9.90
MAS LEDtube VLE1200mm HO 14W T8	50,000	142 - 150	\$17.00	\$9.50	\$8.00
MAS LEDtube VLE 600mm HO 8W T8	50,000	125 - 131	\$12.50	\$7.00	\$6.50
CorePro LEDtube 1200mm 16W T8	30,000	113	\$12.50	\$7.00	\$6.00
CorePro LEDtube 600mm 9W T8	30,000	100	\$10.50	\$5.90	\$5.00
LEDtube 1200mm 16W T8	15,000	113	\$5.60	\$3.50	\$3.35
LEDtube 600mm 8W T8	15,000	100	\$5.00	\$2.90	\$2.80

[^]Refer to Terms and Conditions overleaf.

Mains T5 LEDtube lighting

Philips Master LEDtube Mains T5 brings simplicity to your lighting project.

Perfectly safe, reliable & easy to install

Philips MASTER LEDtube Mains T5 installs in luminaires operating on mains power connection. So simple to operate! It is the ideal alternative to standard fluorescent tubes to maximize value over lifetime with high energy saving and lower maintenance costs

Key benefits

- Reduced operational cost thanks to lower energy consumption
- Lower maintenance cost thanks to longer lifetime than conventional lamps
- Fastest and easiest way to upgrade existing luminaires to LED technology; completely safe product and installation process

Features

- Replacement of existing T5 lamps: operates with mains power connection
- Energy savings compared with fluorescent tubes
- Long lifetime
- No mercury

Applications

- Offices, shops, classrooms
- Industrial facilities and warehouses

Cost and CO₂ savings right from the start

When updating from fluorescent tubes, you can expect a full return on investment in only 5.5 months. A typical small carpark will save SGD4,300 by replacing 100 units of 28W fluorescent tubes with 16.5W Ultra Efficient Master LEDtubes.¹

	Fluorescent TL5 1200mm	Philips Master LEDtube High Efficient 1200mm
Lifetime	15,000 hours	50,000 hours
Lamp Wattage	28W	16.5W
Total savings per year ¹	With Trade-in Promo	
Payback time	\$4,300 5.5 months	

Number of lamps 100 Burning hours per year 8,760² Energy costs \$0.30/kWh



Compared to a fluorescent tube, the Philips MASTER LEDtube HE can reduce CO₂ emissions by up to 26,879 kg over its lifetime – equivalent to the emissions absorbed by more than 1,222 trees.³



Promotion details[^]

Product Model	Lifetime (hours)	Energy Efficacy (lm/W)	Suggested Retail Price	Promo Price (without Trade-in)	Promo Price (with Trade-in)
MAS LEDtube 1200mm HE 16.5W T5	50,000	140 - 151	\$25.70	\$14.40	\$12.50
MAS LEDtube 600mm HE 8W T5	50,000	125 - 131	\$17.00	\$9.50	\$8.00
CorePro LEDtube 1200mm 16W G5	30,000	122 - 131	\$19.20	\$10.80	\$9.50
CorePro LEDtube 600mm 8W G5	30,000	119 - 131	\$14.00	\$7.90	\$7.00

[^]Refer to Terms and Conditions overleaf.

¹ Calculation for a typical carpark based on 100 x 28W fluorescent lamps with a lifetime of 15,000 hours vs 100 x 16.5W Master High Efficient LEDtubes with a lifetime of 50,000 hours; SGD30 cent energy cost/hour; SGD10 replacement cost per lamp; 8,760 burning hours per year.

² Energy use. Based on 24 hrs burning per day, 365 days per year.

³ Based on multiple scientific literature, an average fully grown tree can absorb 22 kg CO₂ per year.

List of Participating Partners

NORTH

Choo Chiang Marketing Pte. Ltd.
Blk 5070 Ang Mo Kio Industrial Park 2,
#01-1511/1513/1515, Singapore 569573
Tel: 6483 3233

Choo Chiang Marketing Pte. Ltd.
10 Woodlands Loop, Singapore 738388
Tel: 6366 5959

Penta Lighting Pte. Ltd.
32 Ang Mo Kio Industrial Park 2, #06-15/16,
Sing Industrial Complex, Singapore 569510
Tel: 6484 9000
Email: lightingservices@penta.sg

CENTRAL

Choo Chiang Marketing Pte. Ltd.
17 Hamilton Road, Singapore 209187
Tel: 6296 4111

Choo Chiang Marketing Pte. Ltd.
Blk 640 Rowell Rd, #01-70, Rowell Court,
Singapore 200640
Tel: 6396 4111

Choo Chiang Marketing Pte. Ltd.
Blk 3 Toa Payoh Industrial Park, #01-1381,
Singapore 319055
Tel: 6250 4520

Denique Singapore Pte. Ltd.
34 Upper Weld Road, Singapore 207391
Tel: 6298 2755
Email: denique@singnet.com.sg

Kim Siah Electric Co. Pte. Ltd.
Blk 635 Veersamy Rd, #01-162-166,
Rowell Court, Singapore 200635
Tel: 6291 4000
Email: sales@kimsiah.com.sg

EAST

Choo Chiang Marketing Pte. Ltd.
488A Sims Ave, Singapore 387605
Tel: 6748 1377

Choo Chiang Marketing Pte. Ltd.
Blk 9005 Tampines St 93, #01-248,
Singapore 528839
Tel: 6786 9959

Choo Chiang Marketing Pte. Ltd.
61 Ubi Road 1, #01-11, Oxley BizHub,
Singapore 408727
Tel: 6385 9959

Kum Eng Huat Electric Co Pte. Ltd.
No. 4 Kaki Bukit Place, Eunos Techpark,
Singapore 416182
Tel: 6842 1818
Email: enquiry@kumenghuat.com.sg

Lim Kim Hai Electric Co (S) Pte. Ltd.
53 Kallang Place, Lim Kim Hai Building,
Singapore 339177
Tel: 6490 5000
Email: customerservice@limkimhai.com.sg

WEST

Choo Chiang Marketing Pte. Ltd.
3 Soon Lee Street, #01-09, Pioneer Junction,
Singapore 627606
Tel: 6266 5859

Choo Chiang Marketing Pte. Ltd.
48 Toh Guan Road East, #01-107,
Enterprise Hub, Singapore 608586
Tel: 6515 6459

**Lim Kim Hai Electric Concept Store
@ Jurong Island**
3 Sakra Road, #02-04 Oasis@Sakra,
Jurong Island, Singapore 627878
Tel: 6265 7138
Email: solutions@limkimhai.com.sg

Terms and Conditions

- The promotion is applicable from 1st January to 31st March 2024.
- Promotional prices are subject to 9% Goods and Services Tax (GST), unless otherwise stated.
- In addition to these general terms & conditions, specific terms & conditions may apply to each respective promotion.
- All promotions are only valid in isolation, not in conjunction with any other promotions, discounts or vouchers. In the event where there are two or more ongoing promotions, the customer is only entitled to one promotion, discount or voucher, whichever he/she deems most appropriate.
- Promotional products are subject to in-store stocks' availability, not inclusive of spare parts.
- To the maximum extent permitted by applicable law, Signify reserves the right, at its sole discretion to amend, withdraw or revise these terms and conditions and the gifts at any time without prior notice and in such event, Signify shall not have any liability whatsoever.
- Please refer to www.signify.com/global/conditions-of-commercial-sale/sg-en



Connect with us
for more information!

