

- Daylight harvesting zone
- MAINS LINE POWER
- 10VDC
- DyNet Belden 150R/1501P CAT5e or CAT6
- Line Power 120 - 277 VAC
- 10VDC dimmed luminaire

Quantity	Icon	Part code	Description
4		DDC116-UL	1 x 16 Amp relay & 0-10V to be mounted with J-box
8		DUS360CR	Multi functional sensor. Occupancy and daylighting
2		1 x PA4BPA-WW 1 x DACM	4 button Antumbra station & DACM

Control strategies

- Networking**
When made part of a larger Dynalite system can be integrated into BMS via BACnet, scheduling, head-end software monitor / manage.
- UL924 compliance**
Dry contact input to directly trigger emergency luminaire response
- Lighting scenes**
From local User Interface stations, recall different lighting scenes.
- Scheduling**
Ready to receive centralized scheduling network messages for lighting automation.

LIGHTING:

Each lighting group is individually dimmable.

Manual:

From User Interface station, lighting can be turned on to a pre select scene, raise/lower, or be turned off.

System defaults to Manual ON/Auto OFF mode. User must trigger the switch to turn the lights ON

OCCUPANCY:

If no occupancy has been detected after 19 minutes time, lighting will be dimmed to 20%. After an additional 1 minute of grace period where occupancy is still not detected, the system will turn the lighting OFF.

Daylight Harvesting groups nearest to windows will automatically dim lighting for a target light level of 35 foot candles.

Options if part of a larger network:

Multiple rooms can be connected together as part of a larger DyNet network.

Monitor and manage area through central headend software. Access graphical floor plan to visualize occupancy, light level, & temperature. Edit sensor time out and target FC levels.

Integration opportunities via BACnet to 3rd party system like HVAC or AV. User Interface stations (Antumbra & Revolution) can report to central system current room temperature.

Integrate and participate in Open ADR-based load shedding programs.

- Daylight harvesting**
Sensors monitoring available day light and adjust light luminaire to target FC levels.
- Occupancy sensing**
Detecting the presence of occupancy to automatically turn off the luminaire when area is vacated.

CLIENT: 0-10V-OPEN_OFFICE

Not to scale
ALL RIGHTS RESERVED. NO REPRODUCTION UNLESS WRITTEN CONSENT GIVEN

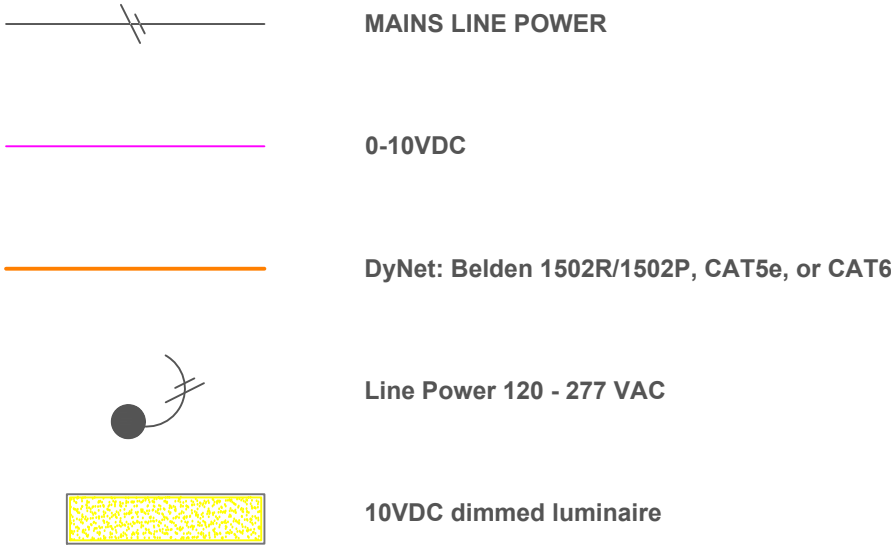
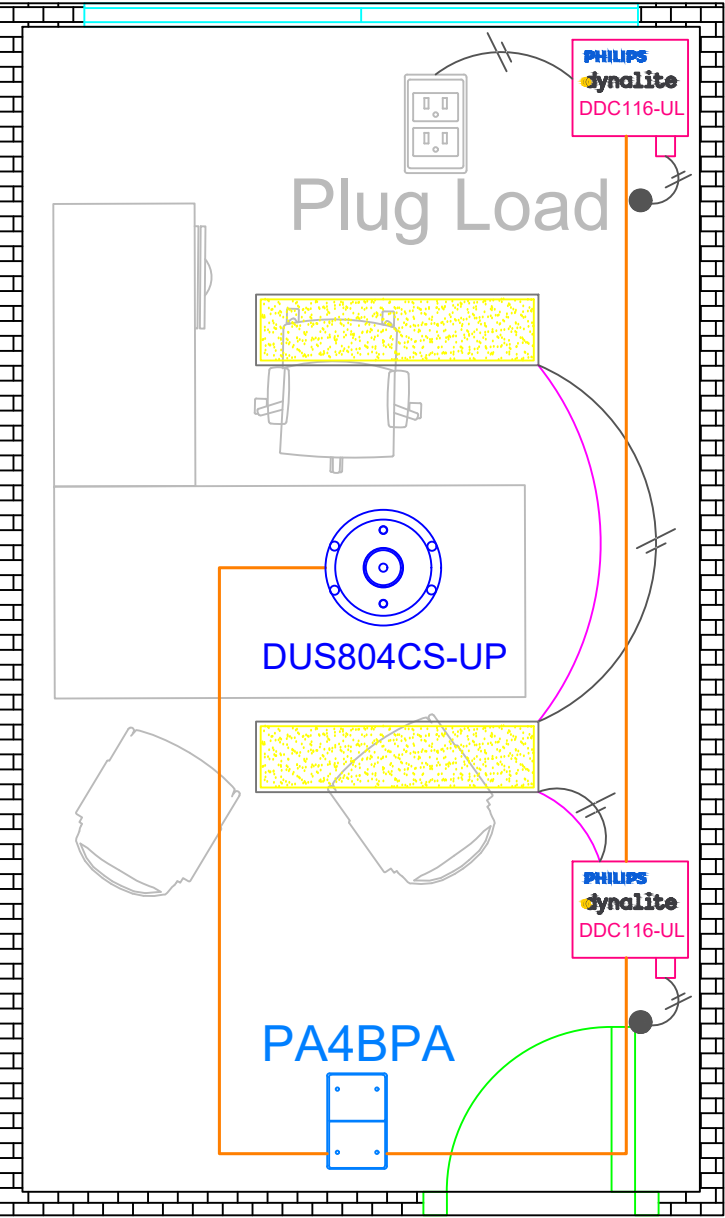
Philips Dynalite
Empowering smart buildings
p: 1/1
m: daniel.walker@signify.com
w: www.dynalite.com



Rev.	AMENDMENT DESCRIPTION	DATE

DRAWN D.WALKER

JOB-DRAWING No.
DWGNO
REVISION
A



Quantity	Icon	Part code	Description
2		DDC116-UL	1 x 16 Amp relay & 0-10V to be mounted with J-box
1		DUS804CS-UP	Dual tech, multi functional sensor. Occupancy and daylighting
1		1 x PA4BPA-WW 1 x DACM	4 button Antumbra station & DACM

Manual:
From User Interface station, lighting can be turned on to a pre select scene, raise/lower, or be turned off.

System defaults to Manual ON/Auto OFF mode. User must trigger the switch to turn the lights ON

OCCUPANCY:
If no occupancy has been detected after 19 minutes time, lighting will be dimmed to 20%. After an additional 1 minute of grace period where occupancy is still not detected, the system will turn the lighting OFF.

Options if part of a larger network:
Multiple rooms can be connected together as part of a larger DyNet network.

Monitor and manage area through central headend software. Access graphical floor plan to visualize occupancy, light level, & temperature. Edit sensor time out and target FC levels.

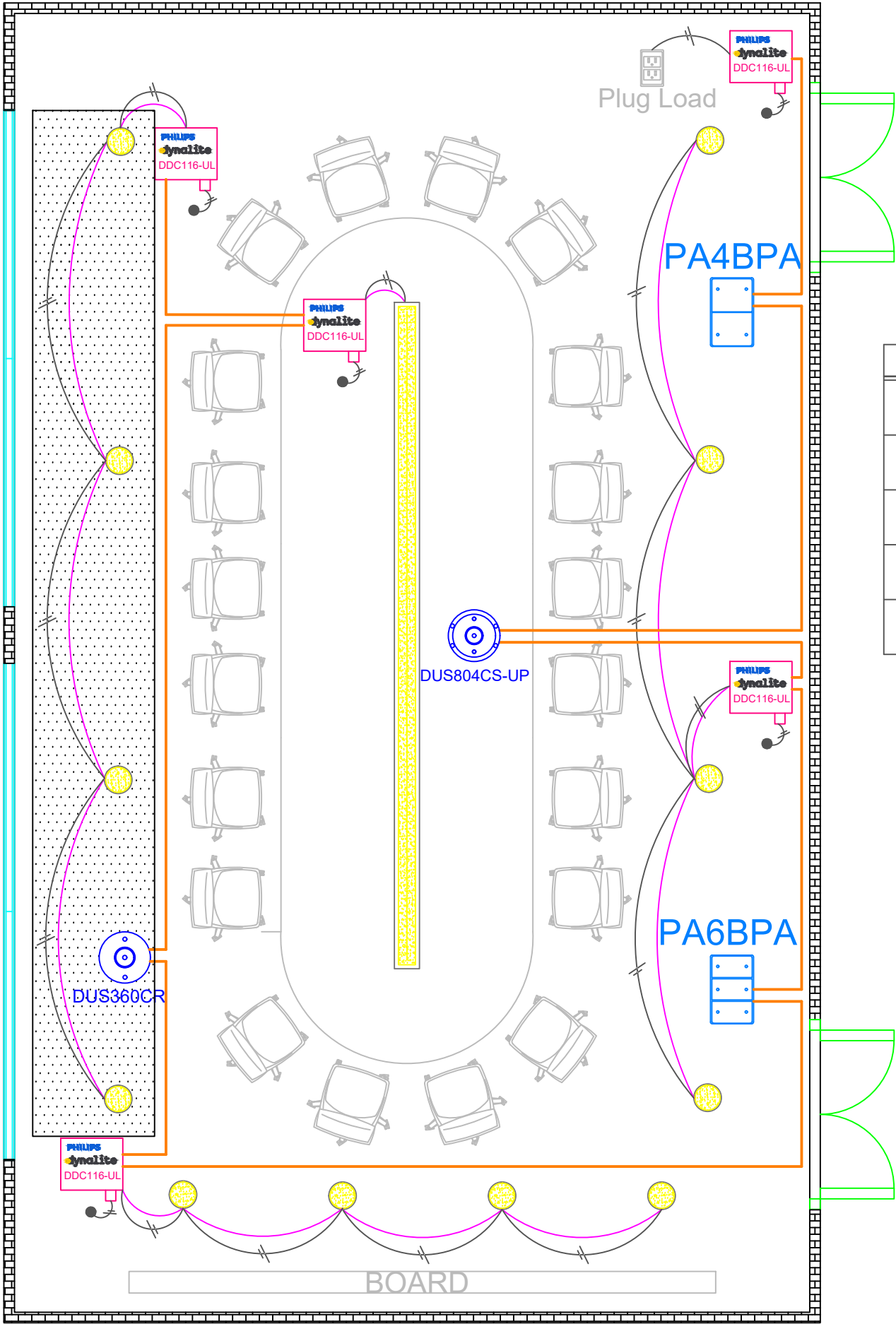
Integration opportunities via BACnet to 3rd party system like HVAC or AV. User Interface stations (Antumbra) can report to central system current room temperature.

Integrate and participate in Open ADR-based load shedding programs.

Control strategies

- Daylight harvesting**
Sensors monitoring available day light and adjust light fixtures to target FC levels
- Occupancy sensing**
Detecting the presence within the local area of an occupant to maintain lighting, then automatically turn off the lighting when area is vacated.
- Lighting scenes**
From local User Interface stations, recall different lighting scenes

- Scheduling**
Ready to receive centralized scheduling network messages for lighting automation.
- Networking**
When made part of a larger Dynalite system can be integrated into BMS via BACnet, scheduling, head-end software monitor / manage.
- UL924 compliance**
Dry contact input to directly trigger emergency lighting response



Daylight harvesting zone

MAINS LINE POWER

0-10VDC

DyNet: Belden 1502R/1502P, CAT5e, or CAT6

Line Power 120 - 277 VAC

10VDC dimmed luminaire

Quantity	Icon	Part code	Description
5		DDC116-UL	1 x 16 Amp relay & 0-10V to be mounted with J-box
1		DUS360CR	Multi functional sensor. Occupancy and daylighting
1		DUS804CS-UP	Dual tech, multi functional sensor. Occupancy and daylighting
1		1 x PA4BPA-WW 1 x DACM	4 button Antumbra station & DACM
1		1 x PA6BPA-WW 1 x DACM	6 button Antumbra station & DACM

Control strategies

- Daylight harvesting**
Sensors monitoring available day light and adjust light fixtures to target FC levels
- Occupancy sensing**
Detecting the presence within the local area of an occupant to maintain lighting, then automatically turn off the lighting when area is vacated.
- Lighting scenes**
From local User Interface stations, recall different lighting scenes
- Scheduling**
Ready to receive centralized scheduling network messages for lighting automation.
- Networking**
When made part of a larger Dynalite system can be integrated into BMS via BACnet, scheduling, head-end software monitor / manage.
- UL924 compliance**
Dry contact input to directly trigger emergency lighting response

LIGHTING:

Each lighting group is individually dimmable.

Manual:

From User Interface station, lighting can be turned on to a pre select scene, raise/lower, or be turned off.

System defaults to Manual ON/Auto OFF mode. User must trigger the switch to turn the lights ON

OCCUPANCY:

If no occupancy has been detected after 19 minutes time, lighting will be dimmed to 20%. After an additional 1 minute of grace period where occupancy is still not detected, the system will turn the lighting OFF.

Lighting group nearest to windows will automatically dim lighting for a target light level of 35 foot candles.

Options if part of a larger network:

Multiple rooms can be connected together as part of a larger DyNet network.

Monitor and manage area through central headend software. Access graphical floor plan to visualize occupancy, light level, & temperature. Edit sensor time out and target FC levels.

Integration opportunities via BACnet to 3rd party system like HVAC or AV. User Interface stations (Antumbra) can report to central system current room temperature.

Integrate and participate in Open ADR-based load shedding programs.

CLIENT:

0-10V-BOARDROOM

Not to scale

ALL RIGHTS RESERVED. NO REPRODUCTION UNLESS WRITTEN CONSENT GIVEN

Philips Dynalite
Empowering smart buildings

p: 1/1
m: daniel.walker@signify.com
w: www.dynalite.com

PHILIPS

dynalite



Rev.	AMENDMENT DESCRIPTION	DATE

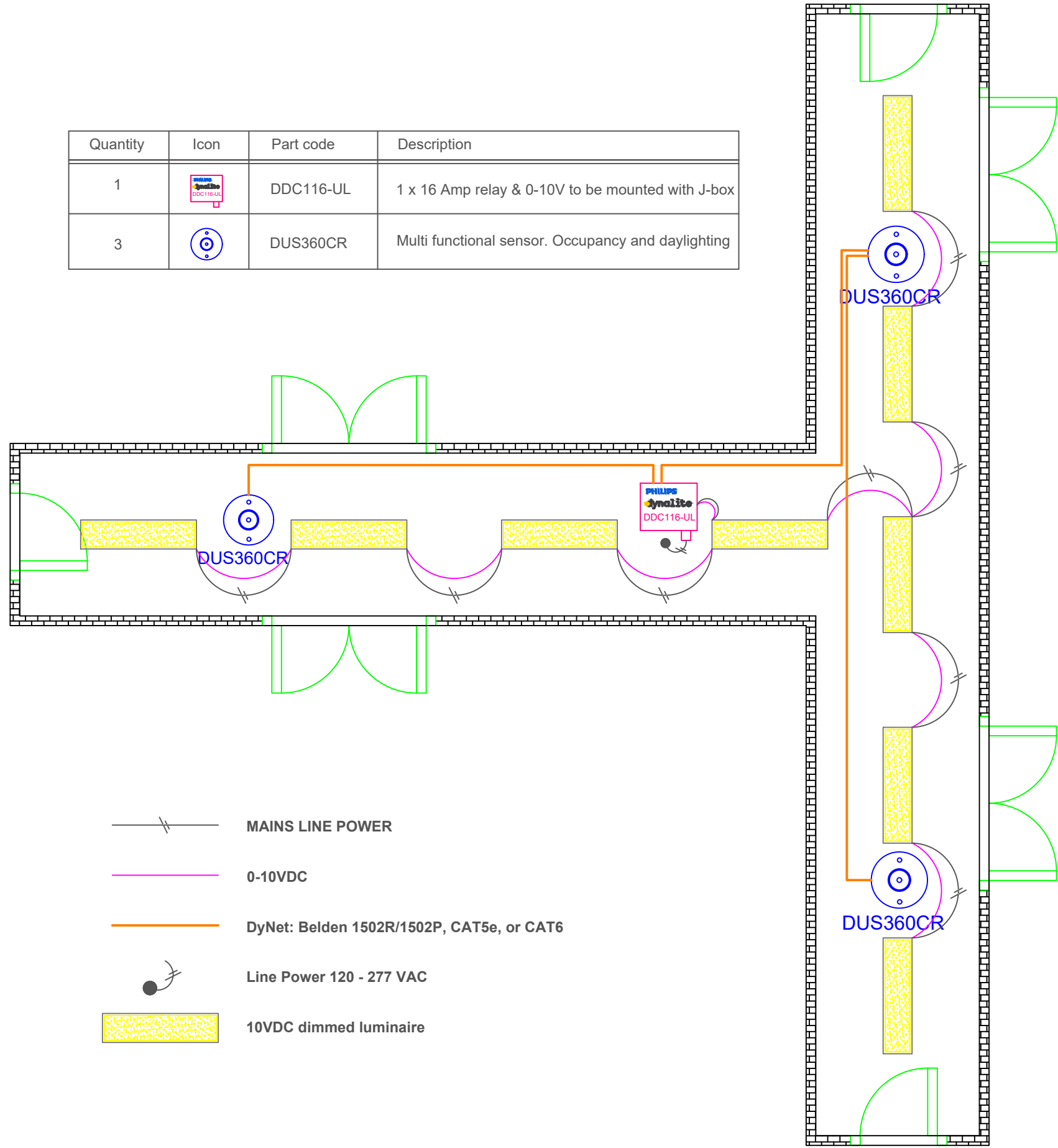
DRAWN D.WALKER

JOB-DRAWING No.
DWGNO

REVISION

A

Quantity	Icon	Part code	Description
1		DDC116-UL	1 x 16 Amp relay & 0-10V to be mounted with J-box
3		DUS360CR	Multi functional sensor. Occupancy and daylighting



OCCUPANCY:

If no occupancy has been detected after 19 minutes time, lighting will be dimmed to 20%. After an additional 1 minute of grace period where occupancy is still not detected, the system will turn the lighting OFF.

Lighting group nearest to windows will automatically dim lighting for a target light level of 35 foot candles.

Options if part of a larger network:

Multiple rooms can be connected together as part of a larger DyNet network.

Monitor and manage area through central headend software. Access graphical floor plan to visualize occupancy, light level, & temperature. Edit sensor time out and target FC levels.

Integration opportunities via BACnet to 3rd party system like HVAC or AV. User Interface stations (Antumbra) can report to central system current room temperature.

Integrate and participate in Open ADR-based load shedding programs.

Control strategies

Daylight harvesting

Sensors monitoring available day light and adjust light fixtures to target FC levels

Occupancy sensing

Detecting the presence within the local area of an occupant to maintain lighting, then automatically turn off the lighting when area is vacated.

Lighting scenes

From local User Interface stations, recall different lighting scenes

Scheduling

Ready to receive centralized scheduling network messages for lighting automation.

Networking

When made part of a larger Dynalite system can be integrated into BMS via BACnet, scheduling, head-end software monitor / manage.

UL924 compliance

Dry contact input to directly trigger emergency lighting response

CLIENT: 0-10V-CORRIDOR

Not to scale
ALL RIGHTS RESERVED. NO REPRODUCTION UNLESS WRITTEN CONSENT GIVEN

Philips Dynalite
Empowering smart buildings

p: 1/1
m: daniel.walker@signify.com
w: www.dynalite.com

PHILIPS
dynalite

Rev.	AMENDMENT DESCRIPTION	DATE

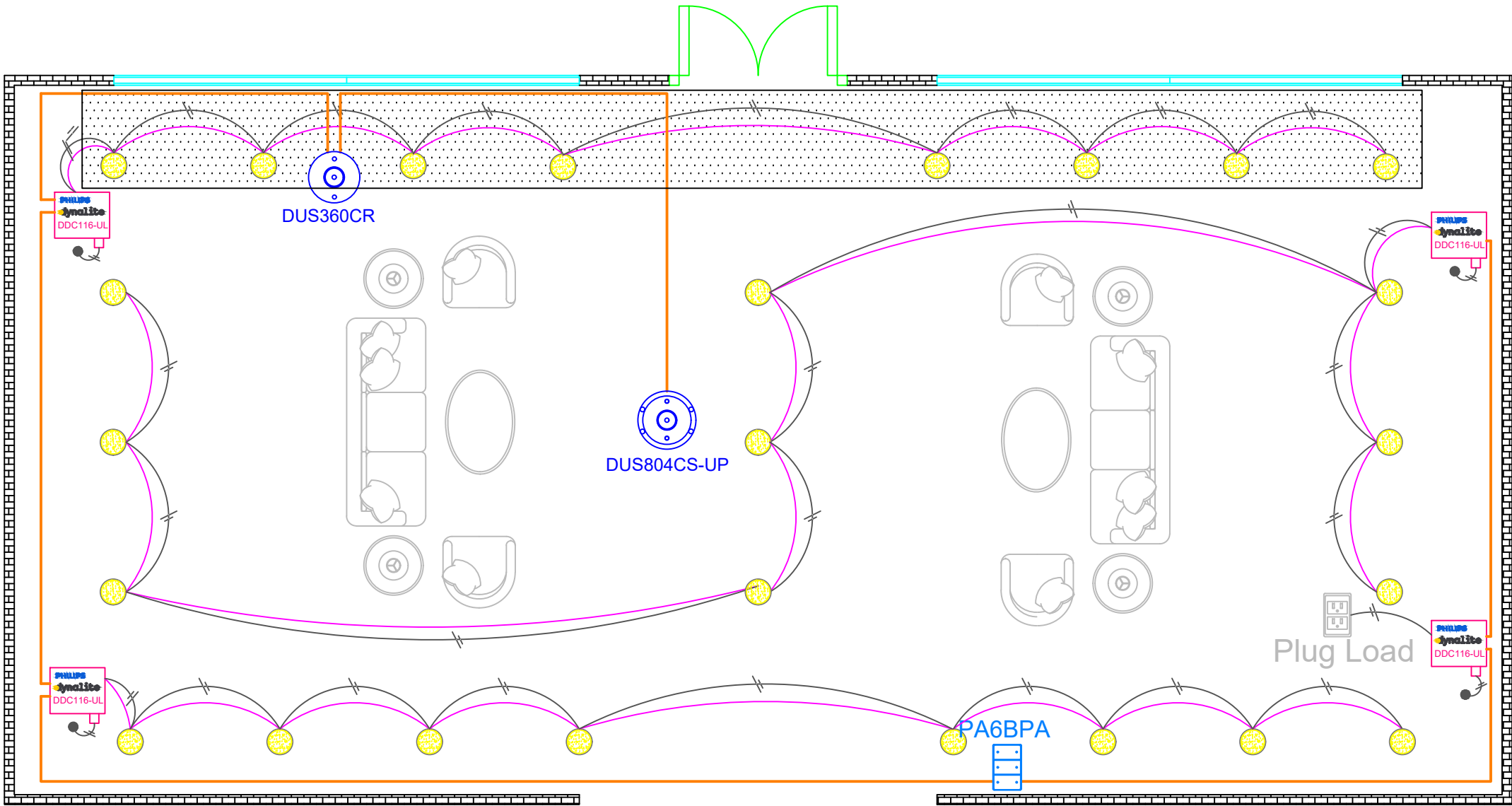
DRAWN D.WALKER

JOB-DRAWING No.

DWGNO

REVISION

A



Daylight harvesting zone

MAINS LINE POWER

0-10VDC

DyNet: Belden 1502R/1502P, CAT5e, or CAT6

Line Power 120 - 277 VAC

10VDC dimmed luminaire

Quantity	Icon	Part code	Description
4		DDC116-UL	1 x 16 Amp relay & 0-10V to be mounted with J-box
1		DUS360CR	Multi functional sensor. Occupancy and daylighting
1		DUS804CS-UP	Dual tech, multi functional sensor. Occupancy and daylighting
1		1 x PA6BPA-WW 1 x DACM	6 button Antumbra station & DACM

Control strategies

- Daylight harvesting**
Sensors monitoring available day light and adjust light luminaire to target FC levels
- Occupancy sensing**
Detecting the presence within the local area of an occupant to maintain lighting, then automatically turn off the lighting when area is vacated.
- Lighting scenes**
From local User Interface stations, recall different lighting scenes
- UL924 compliance**
Dry contact input to directly trigger emergency lighting response

- Scheduling**
Ready to receive centralized scheduling network messages for lighting automation.
- Networking**
When made part of a larger Dynalite system can be integrated into BMS via BACnet, scheduling, head-end software monitor / manage.

LIGHTING:
Each lighting group is individually dimmable.

Manual:
From User Interface station, lighting can be turned on to a pre select scene, raise/lower, or be turned off.

System defaults to Manual ON/Auto OFF mode. User must trigger the switch to turn the lights ON

OCCUPANCY:
If no occupancy has been detected after 19 minutes time, lighting will be dimmed to 20%. After an additional 1 minute of grace period where occupancy is still not detected, the system will turn the lighting OFF.

Lighting group nearest to windows will automatically dim lighting for a target light level of 35 foot candles.

Options if part of a larger network:
Multiple rooms can be connected together as part of a larger DyNet network.

Monitor and manage area through central headend software. Access graphical floor plan to visualize occupancy, light level, & temperature. Edit sensor time out and target FC levels.

Integration opportunities via BACnet to 3rd party system like HVAC or AV. User Interface stations (Antumbra) can report to central system current room temperature.

Integrate and participate in Open ADR-based load shedding programs.