

# PHILIPS

Capricorn Wall Light  
5.5W

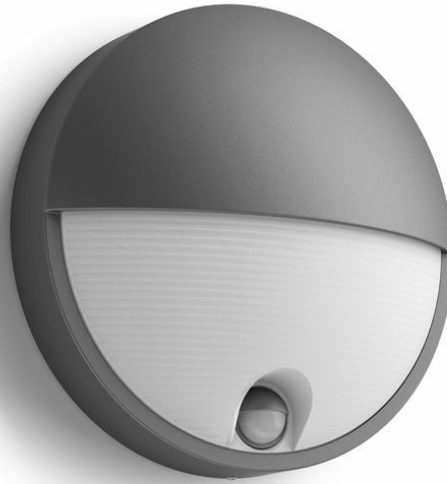
Outdoor luminaires

2700K

Antracite

Sensor; Water Resistant

8720169282667



## Enjoy a beautiful garden with light

This Philips Capricorn outdoor light is designed around the latest trends and lifestyles to define the ambiance you have always desired.

### **Advanced LED light**

- High quality LED light

### **Premium quality**

- High quality material

### **Designed for outdoors**

- IP44 - weather proof

# Highlights

## High quality LED light

These LED lights use a unique technology developed by Philips. They turn on instantly and produce optimal light output that brings out the vivid colors in your garden.

## High quality material

This Philips outdoor lamp is made of high quality materials with superior finishing. This ensures a solid and long lasting product which is resistant to corrosion and stains in all weather conditions

## IP44 - weather proof



This Philips outdoor PIR motion sensor is especially designed for humid outdoor environments and has been tested rigorously to ensure water

resistance. Its IP44 rating means that it has been certified to offer ingress protection against dust and splashing water—perfect for general outdoor use.

# Specifications

## Design and finishing

- Color: Anthracite
- Material: Aluminium

## Environmental

- Disposal of the product: At the end of (economic) life, dispose the product according to local rules and do not dispose the product with regular household waste. The correct disposal of your product will help prevent potential negative consequences for the environment and human health.

## Extra feature/accessory incl.

- 5 years warranty on the LED module: Yes
- Anti rust anti dust: Yes
- Day-and-night sensor: Yes
- Fully weatherproof: Yes
- LED integrated: Yes
- Motion sensor: Yes
- Solar Energy: No
- Warm White Light: Yes
- Centerpiece: No

## Garden area

- Garden area: Garden & Patio

## Light characteristics

- Color rendering index (CRI): 80

## Miscellaneous

- Especially designed for: Garden & Patio
- Style: Contemporary
- Type: Wall Lights
- EyeComfort: No
- Extra Features: Sensor, Water Resistant

## Product dimensions and weight

- Net weight: 0.49 kg
- Height: 21.4 cm
- Length: 21.4 cm
- Width: 7.8 cm

## Service

- Warranty: 3 year(s)

## Technical specifications

- Lifetime up to: 25,000 h
- Total lumen output fixture: 700
- Light color: 2700
- Mains power: 220-240 V
- Fixture dimmable: No
- Energy class included light source: E
- IP code: IP44
- Class of protection: Class II
- Light source replaceable: Yes

8720169282667

**Packaging dimensions & weight**

- EAN/UPC - product: 8720169282667
- Net weight: 0.49 kg
- Gross weight: 0.58 kg
- Height: 21.5 cm
- Length: 8.5 cm
- Width: 21.5 cm



Issue date: 2024-11-21  
Version: 0.154

© 2024 Signify Holding. All rights reserved. Signify does not give any representation or warranty as to the accuracy or completeness of the information included herein and shall not be liable for any action in reliance thereon. The information presented in this document is not intended as any commercial offer and does not form part of any quotation or contract, unless otherwise agreed by Signify. Philips and the Philips Shield Emblem are registered trademarks of Koninklijke Philips N.V.

[www.lighting.philips.com](http://www.lighting.philips.com)