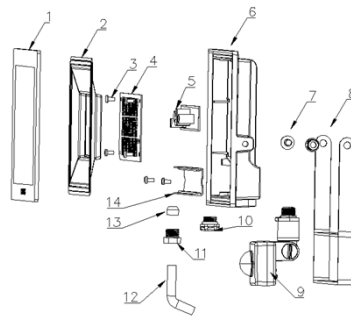


## Dismantling Recommendation on Disposal at End of Life

### Composition Explanation



No.	Components	Specifications	Unit	Quantity
1	stalinite	stalinite	PCS	1
2	reflector	PC	PCS	1
3	philip's head screw M3	steel	PCS	7
4	LED plate		PCS	1
5	Driver		PCS	1
6	housing	ADC12	PCS	1
7	sem screw sem scr M6	SUS304	PCS	2
8	bracket	SPCC	PCS	1
9	Sensor		PCS	1
10	breather alve	PC	PCS	1
11	Waterproof cap	PC	PCS	1
12	3*1.0mm2 sulated wire		PCS	1
13	Waterproof joint	Rubber	PCS	1
14	Drive box	PC	PCS	1

## Dismantling Recommendation on Disposal at End of Life

### Dismantling

### Recommendation on Disposal

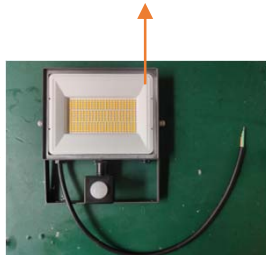
- Plastic part: Reuse and Recycling
- Electrical part: Incineration and disposal
- Metal part: Recycling

### Light source dismantling process

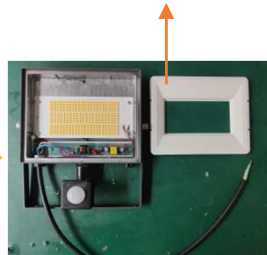
1. Break the glass(Take care to prevent glass splashing)



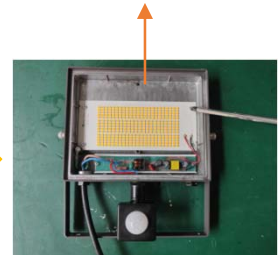
2. Remove glass



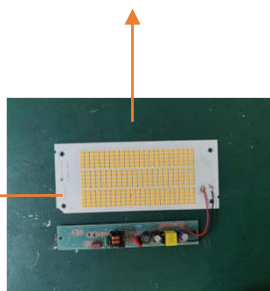
3. Remove the reflector



4. Use a screwdriver to remove the screw

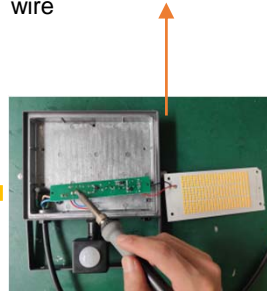


7. Remove the light source part

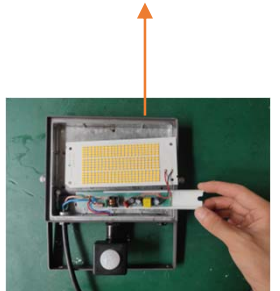


Light Source

6. Use a soldering iron to heat and weld down the wire



5. Take out drive box



## Dismantling Recommendation on Disposal at End of Life

### Dismantling

#### Recommendation on Disposal

- Plastic part: Reuse and Recycling
- Electrical part: Incineration and disposal
- Metal part: Recycling

#### Light source dismantling process

8. Saw off the sensor housing



9. Remove the sensor

