



MasterConnect LEDtube EM/mains T8



MC LEDtube IA 1500mm UO 25W865 T8

Introducing MasterConnect LEDtubes - smart retrofit LED T8 lamps that give you an easy and seamless way to upgrade to connected lighting. Simply set up with an intuitive app and MasterConnect LED tube lighting can be programmed to maximize energy savings, while providing wireless and automated light for your comfort and convenience. What's more, it is fully scalable and upgradable. If you want to enjoy additional benefits such as remote control or a management dashboard, you can simply keep the lamps you currently have installed and add a gateway to experience all the advantages of a cloud-based system. There's no better way to take lighting solutions to the next level.

Product data

General Information		LLMF At End Of Nominal Lifetime (Nom)	
Cap-Base	G13 [Medium Bi-Pin Fluorescent]		70 %
Nominal lifetime	60,000 hour(s)	Flickering value (PstLM) - Flickering value as per EN 61000-3-3	1
Switching Cycle	200,000	Stroboscopic effect visibility measure (SVM)	0.9
Lighting Technology	LED	Photobiological safety according to EN 62471	RG0
Flux measurement reference	Sphere		
Light Technical		Operating and Electrical	
Color Code	865 [CCT of 6500K]	Line Frequency	50 to 60 Hz
Beam Angle (Nom)	160 degree(s)	Input Frequency	50 to 60 Hz
Luminous Flux	3,700 lm	Power Consumption	25 W
Luminous Efficacy (rated) (Nom)	148 lm/W	Lamp Current (Max)	117 mA
Color Designation	Cool Daylight	Lamp Current (Min)	108 mA
Correlated Color Temperature (Nom)	6500 K	Starting Time (Nom)	0.5 s
Color Consistency	<6	Warm-up time to 60% light	0.5 s
Color rendering index (CRI)	83	Power Factor (Fraction)	0.9
		Voltage (Nom)	220-240 V

MasterConnect LEDtube EM/mains T8

LED alternative to fluorescent lamp power	58 W
Inrush current at mains	9
Max. lamp no. on MCB B type 10A – Mains	73
Max. lamp no. on MCB B type 10A – EM ballast without Compensation Capacitor.	73
Max. lamp no. on MCB B type 10A – EM ballast with Compensation Capacitor.	15
Max. lamp no. on MCB B type 16A – Mains	116
Max. lamp no. on MCB B type 16A – EM ballast without Compensation Capacitor.	116
Max. lamp no. on MCB B type 16A – EM ballast with Compensation Capacitor.	24
Ballast Compatibility	EM/Mains

Temperature

Ambient temperature range	-20 °C to 45 °C
T-Case Maximum (Nom)	65 °C

Controls and Dimming

Dimmable	Wireless Dim
----------	--------------

Mechanical and Housing

Product Length	1,500 mm
Bulb Shape	T8

Approval and Application

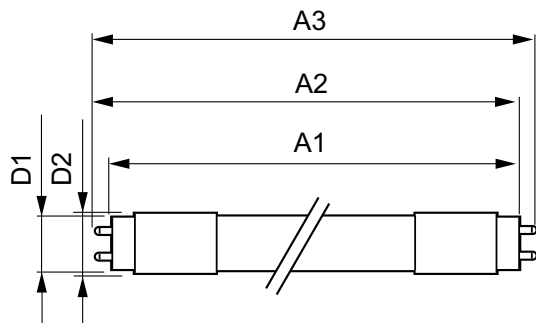
Energy Efficiency Class	D
-------------------------	---

Energy Saving Product	Yes
Approval Marks	RoHS compliance KEMA Keur certificate
Energy Consumption kWh/1000 h	25 kWh
EPREL Registration Number	406203
CE mark	Yes
EU RoHS compliant	Yes

Product Data

Order product name	MC LEDtube IA 1500mm UO 25W865 T8
Full product name	MC LEDtube IA 1500mm UO 25W865 T8
Full product code	871869966978200
Local code description	MLDTESU25.51586
Order code	929002210902
Material Nr. (12NC)	929002210902
Local order code	MLDTESU25.51586
Numerator - Quantity Per Pack	1
Net Weight (Piece)	0.450 kg
EAN/UPC - Product/Case	8718699669782
Numerator - Packs per outer box	10
EAN/UPC - Case	8718699669799

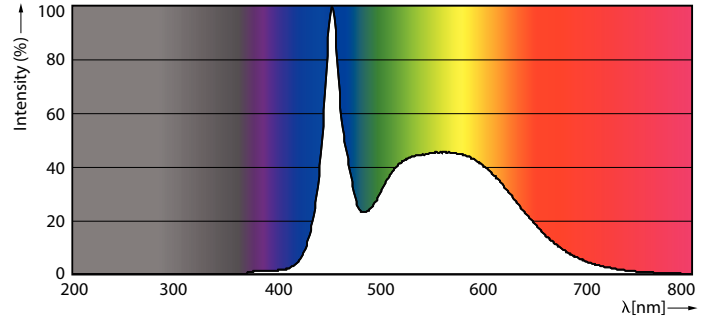
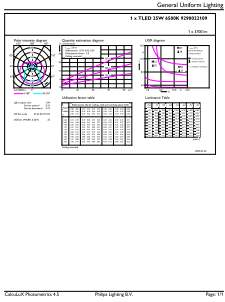
Dimensional drawing



Product	D1	D2	A1	A2	A3
MC LEDtube IA 1500mm UO 25W865 T8	25.8 mm	28 mm	1,498.7 mm	1,505.8 mm	1,512.9 mm

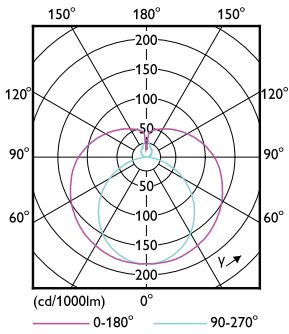
MasterConnect LEDtube EM/mains T8

Photometric data



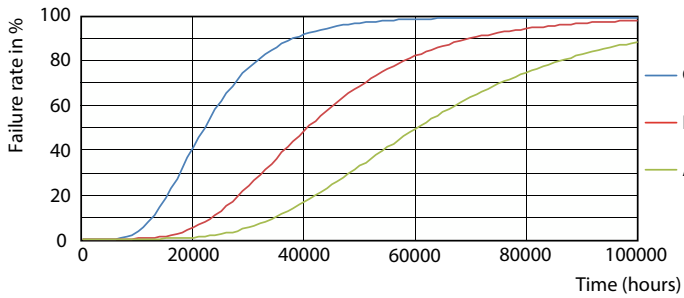
General uniform lighting - MC LEDtube IA 1500mm UO 25W865 T8

Spectral Power Distribution Colour - MC LEDtube IA 1500mm UO 25W865 T8

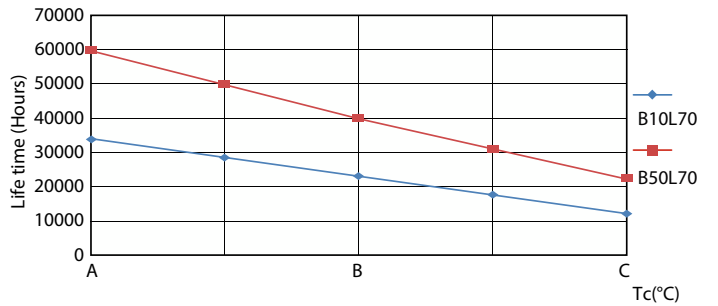


Light Distribution Diagram - MC LEDtube IA 1500mm UO 25W865 T8

Lifetime



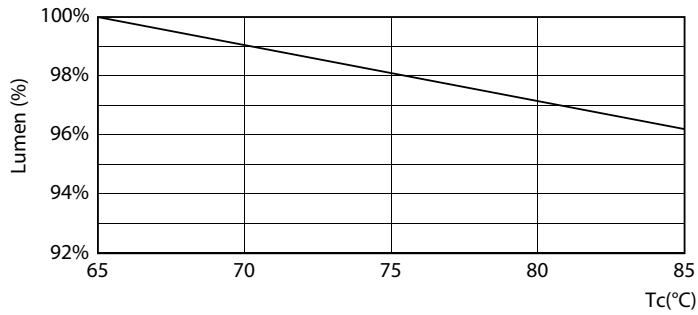
FailureRate



LifetimeVsTc

MasterConnect LEDtube EM/mains T8

Lifetime



Lumen Maintenance Diagram - MC LEDtube IA 1500mm UO 25W865 T8

Lumen Maintenance Diagram - MC LEDtube IA 1500mm UO 25W865 T8



Life Expectancy Diagram

