

PHILIPS
hue

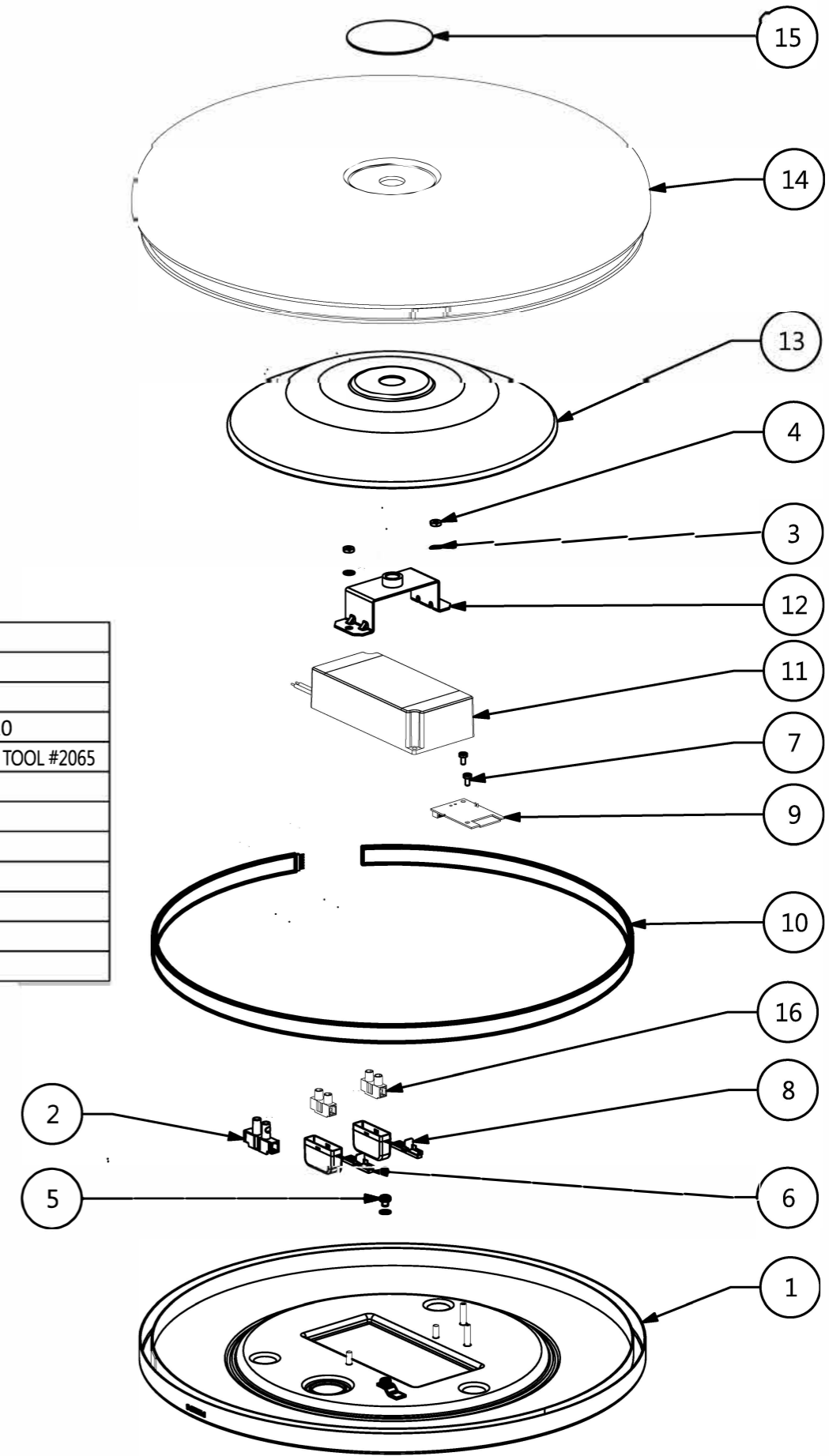
Warnings

Always make sure the luminaire is detached from the mains socket
Always make sure the DC cable is detached from the power supply
Staring at the operating light source may cause eye injury

#	Disassemble/dismantle steps	Tools needed
a	UNSCREW BY HAND DECO PLATE [15] AND REMOVE IT FROM DIFFUSER [14]	-
b	REMOVE DIFFUSER [14] WITH COVER [13] GENTLY LIFTING IT OUT	-
c	UNSCREW BOTH SCREWS [7] AND RELEASE LIGHT SOURCE - HUE CONNECT [9]	TORXHEAD SCREWDRIVER T10
d	UNPLUG CONNECTION CABLE AND POWER WIRE FROM LIGHT SOURCE - HUE CONNECT [9]	FLATHEAD SCREWDRIVER OR WAGO TOOL #2065
e	UNPLUG CONNECTION CABLE FROM LIGHT SOURCE LED STRIP [10]	-
f	REMOVE LIGHT SOURCE - LED STRIP [10] ACCORDING INSTRUCTION 442295215544_L2 REMOVAL AND TEST INSTRUCTION FLEX LED STRIP	SEE INSTRUCTION
g	REMOVE BOTH TERMINAL BLOCKS [16] FROM COVER N [6] AND COVER L [8]	-
h	DISCONNECT CONTROL GEAR - PSU [11] WIRES FROM BOTH TERMINAL BLOCKS [16]	FLATHEAD SCREWDRIVER
i	UNSCREW BOTH NUT [4] AND REMOVE BRACKET [12] AND CONTROL GEAR - PSU [11]	SOCKET WRENCH 7
j	UNSCREW SCREW [5] AND DISCONNECT EARTING WIRE FROM BASE [1]	FLATHEAD SCREWDRIVER
k	DISCONNECT EARTHING WIRE FROM TERMINAL BLOCK [2]	FLATHEAD SCREWDRIVER

#	COMPONENT	QTY
1	BASE	1
2	TERMINAL BLOCK	1
3	WASHER	2
4	NUT	2
5	SCREW	1
6	COVER N	1
7	SCREW	2
8	COVER L	1
9	LIGHT SOURCE - HUE CONNECT	1
10	LIGHT SOURCE - LED STRIP	1
11	CONTROL GEAR - PSU	1
12	BRACKET	1
13	COVER	1
14	DIFFUSER	1
15	DECO PLATE	1
16	TERMINAL BLOCK	2

SKU	Color	Country
929003056901	WHITE	EU/UK



STATUS	DESCRIPTION	DESIGN ID	01	2021-10-08
Struana bathroom ceiling lamp white 1x27W 24V,Disassembly instruction		DOC 12NC	442295713063	
NAME	Ir Pi	LOCAL PART ID	SH. 1	SH.
CHECKED	DATE	2021-10-08		A3-L