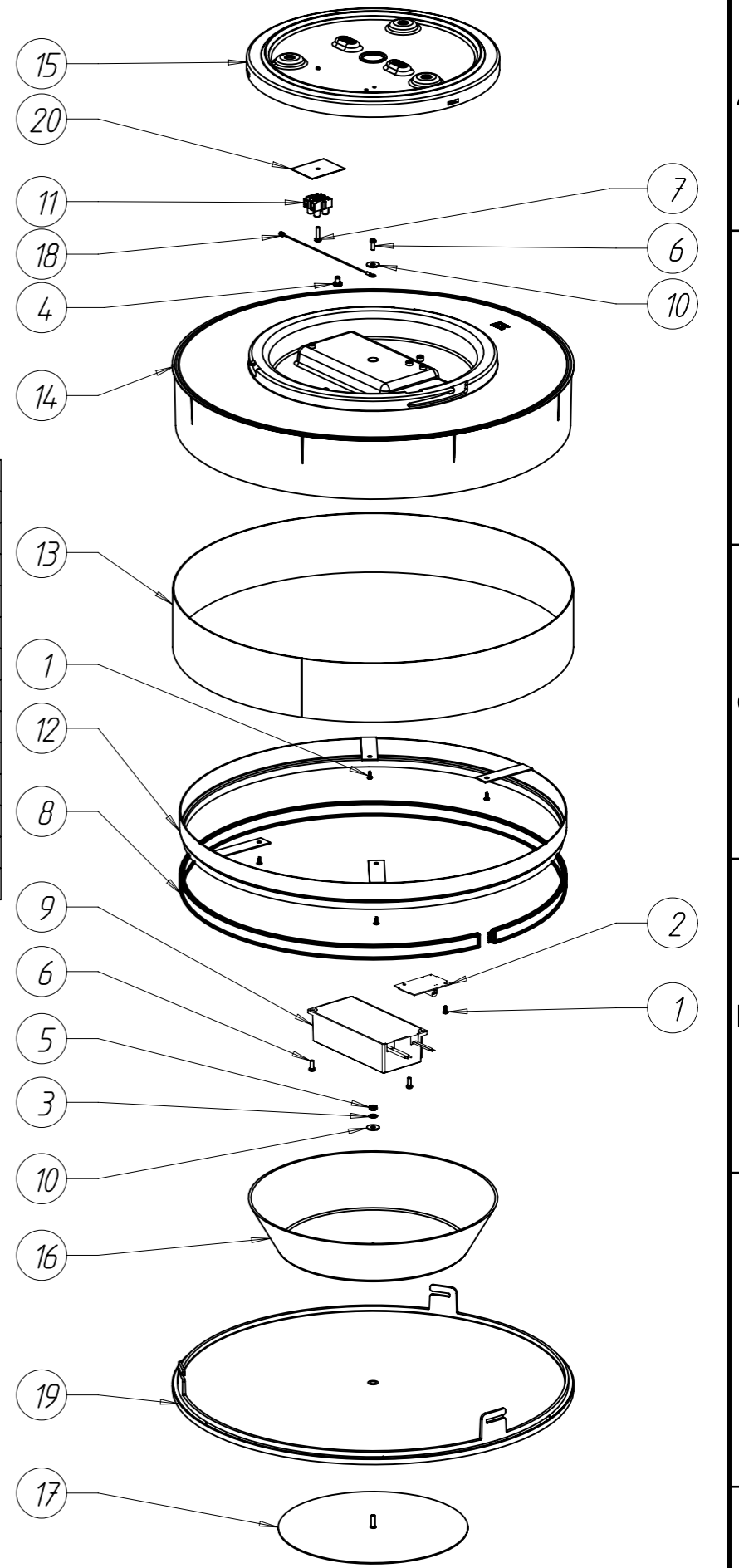


PHILIPS hue

Warnings

Always make sure the luminaire is detached from the mains socket
Always make sure the DC cable is detached from the power supply
Staring at the operating light source may cause eye injury

#	Disassemble/dismantle steps	Tools needed
a	Press and rotate diffuser [19] by hand counter clockwise until it unsnap. Lift the diffuser up to remove it from base [14]	-
b	Unscrew one nut [5] and remove washer [10], tooth washer [3] and reflector [16] from diffuser [19]	SOCKET WRENCH
c	Remove deco ring [13] by lifting up from the base [14]	-
d	Unplug flat cable from Light source - hue connect [2] and Light source - led strip [8]	-
e	Unplug wires of the control gear - psu [9] from light source-hue connect [2]	FLATHEAD SCREWDRIVER OR WAGO TOOL #2065
f	Unscrew one screw [1] and remove light source-hue connect [2]	TORXHEAD SCREW DRIVER T10
g	Unscrew 4 screws [1] and remove heat sink [12] with light source - led strip [8]	TORXHEAD SCREW DRIVER T10
h	Remove light source - led strip [8] from heat sink [12]	See instruction ★
i	Rotate bracket [15] by hand counter clockwise until it unsnap. Lift bracket up to remove it from base [14]	-
j	Unscrew 1 screw [7] and remove terminal block [11] and foil [20]	TORXHEAD SCREW DRIVER T10
k	Unscrew 1 screw [6] and remove suspension cable [18] and washer [10] from base [14]	TORXHEAD SCREW DRIVER T10
l	Unscrew 1 screw [4] and remove it from bracket [15]	CROSSHEAD SCREWDRIVER PZ
m	Unscrew 2 screws [6] and remove control gear-psu [9] from base [14]	TORXHEAD SCREW DRIVER T10



#	COMPONENT	QTY
1	Screw	5
2	Light source - hue connect	1
3	Washer	1
4	Screw	1
5	Nut	1
6	Screw	3
7	Screw	1
8	Light source - led strip	1
9	Control gear - psu	1
10	Washer	2
11	Terminal block	1
12	Heat sink	1
13	Deco ring	1
14	Base	1
15	Bracket	1
16	Reflector	1
17	Deco plate	1
18	Suspension cable	1
19	Diffuser	1

★

FOR LIGHT SOURCE-LED STRIP REMOVAL PLEASE SEE DOCUMENT 442295215544_L2 Removal and Test Instruction Flex LED strip

SKU	Color	Country
915005997801	White	EU/UK
915005997201	Black	EU/UK
915005997301	White	EU/UK
929003526301	Black	EU/UK

STATUS	DESCRIPTION D0069756 Hue Infuse and Xamento M ceiling lamp	DESIGN ID D0069756	01	2021-06-29
NAME Kudlaty, Pawel	LOCAL PART ID	SH. 1	SH. 511	A3-L
CHECKED	DATE 2021-06-29	CONFIDENTIAL, PROPERTY OF: © 2021 Signify Holding		