

Installation Guide

— Philips TrueForce LED lamps

Please take the time to read this installation guide. The guide contains important information and notes regarding the installation and operation.

IMPORTANT!

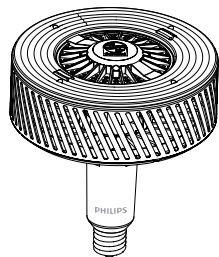
- Always switch off the power supply before commencing work!
- The LED lamp is suitable for direct main voltage input.
- 95W LED highbay lamp is compatible with BHL/BSN 250W ballast and 140W LED highbay lamp is compatible with BHL/BSN 400W ballast.
- The LED lamp is NOT compatible with dimmers.
- The product is NOT compatible to use with electronic ballasts.
- Check the ballast type before commencing the installation.
- Suitable for use in operating temperature range between -40°C to +55°C.
- If LED lamp is being used within luminaire, the minimum dimensions requirement on lamp compartment is (HxL) 300mmx406mm. If the luminaire comes with a glass/cover, it's recommended to detach it for optimal light efficiency and product lifetime. Please check the Tc temperature in application guide for best performance.
- Do not change the structure or any components of the LED lamp to ensure safety.
- The LED lamp is designed to fit in standard IEC compliant E40 lamp holders.
- The LED lamp should be installed by qualified professional electrician.
- Perform inspection before installation to ensure the luminaire/lamp holder is in good condition to carry the weight and performance of the LED lamp.
- The LED lamps should be positioned so that prolonged staring into the luminaire at a distance closer than 1m is not expected.
- Always install the safety sling provided in the package.
- The LED lamp fulfilled IP40 requirement.
- The LED lamp is designed for general lighting service.
- Please do not apply the LED lamp in applications which contains emergency or/and explosive proof luminaires.
- The total system performance may vary depending on the lighting/luminaire system.
- For latest information, please refer to www.philips.com/lighting
- In case of doubt, please consult Signify representative.

DISCLAIMER:

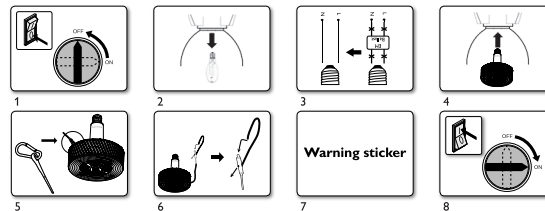
Signify disclaims liability for any direct, indirect or incidental damages in case of installation performed either not according to this guide or not performed by a professional electrician.

CE RoHS COMPLIANT KEMA KEUR IP40

PHILIPS



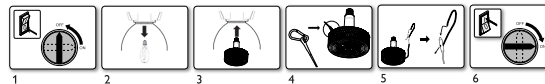
For replacing MH HID lamp, convert to mains voltage input



Perform a visual inspection to ensure the lamp-holder and internal wiring is not damaged, if the lamp-holder is damaged, corroded, charred, blackened, or loose, the lamp holder should be replaced with new lamp-holder. If the internal wire is damaged, it should be replaced with new wire.

- Switch off the power to luminaire.
- Remove diffuser/glass (if provided) and existing lamp from the luminaire.
- Bypass the gear including ballast/capacitor/ignitor and connect lamp-holder wires directly to AC supply leads. Use only on 220-240VAC circuits.
- Check the socket condition (replace it if the condition is poor) then screw in Philips TrueForce LED lamp into the E40 lamp holder firmly.
- Install the safety sling provided to the lamp.
- Attach the other end of the safety sling to the luminaire/fixing point. Adjust the sling length until suitable.
- Affix the sticker provided inside the luminaire where it is prominently visible to the future installers. The sticker serves to notify that the luminaire has been modified and do not accept traditional HID lamps any longer.
- Switch on power.

For replacing MH HID lamp with gear directly



Perform a visual inspection to ensure the lamp-holder and internal wiring is not damaged, if the lamp-holder is damaged, corroded, charred, blackened, or loose, the lamp holder should be replaced with new lamp-holder. If the internal wire is damaged, it should be replaced with new wire.

- Switch off the power to luminaire.
- Remove diffuser/glass (if provided) and existing lamp from the luminaire.
- Check the socket condition (replace it if the condition is poor) then screw in Philips TrueForce LED lamp into the E40 lamp holder firmly.
- Install the safety sling provided to the lamp.
- Attach the other end of the safety sling to the luminaire/fixing point. Adjust the sling length until suitable.
- Switch on power.



© 2020 Signify Holding
@Signify

All rights reserved. Reproduction in whole or in part is prohibited without the prior written consent of the copyright owner. The information presented in this document does not form part of any quotation or contract, is believed to be accurate and reliable and may be changed without notice. No liability will be accepted by the publisher for any consequence of its use. Publication thereof does not convey nor imply any license under patent or other industrial or intellectual property rights. Philips and the Philips Shield Emblem are registered trademarks of Koninklijke Philips N.V.

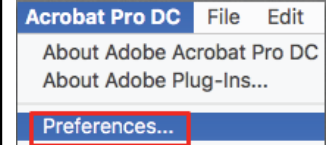
07/2020
www.philips.com/lighting

3241 656 98631

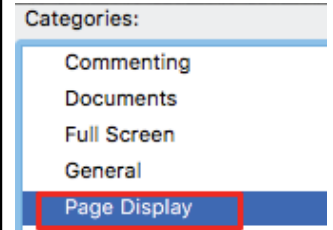
SIGNIFY	
Brand	Philips
Product Family LED Ref. No.	
Shape	
Wattage	
Template Ref.	N/A
SGS number	6109538
12-NC NBR	324165698631
Masterdrawing	210x290mm
CRC Ref.	CRC000
Barcode No.	N/A
Operator(s)	jiangcheng
VERSION No.	v1
Date in	20171110
Date amended	20200701
Color	<input type="checkbox"/> Black <input type="checkbox"/> White <input type="checkbox"/> Yellow <input type="checkbox"/> Cyan
Date Check	
<input type="checkbox"/> Check briefing Traffic	
Artwork document	
<input type="checkbox"/> Legend	<input type="checkbox"/> Number of colors
<input type="checkbox"/> 12NC	<input type="checkbox"/> Trapping/Bleed
<input type="checkbox"/> Barcode	<input type="checkbox"/> Images hires
<input type="checkbox"/> Diecut	<input type="checkbox"/> Jobizes
Approval	
<input type="checkbox"/> QC Lithographer	SGS Shanghai Production
<input type="checkbox"/> Product Manager	jiang.zhang_1@signify.com
<input type="checkbox"/> Traffic Manager	Joanna.Wu

Acrobat PDF
View Setting
确保PDF显示正确，请按
以下设定叠印预览：

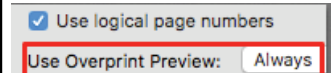
Step 1



Step 2



Step 3



Document Info	Code 12NC:	Designer:	Duplexbox:	Author	Date	Change number	Revision description
	324165698631	SH SGS	324165698631	SH SGS	2020/07/10		
		Design date:	EAN1 number:				
		2020-07-10	N/A				
	Description:		Die-Cut:				
	Highbay Universal QIG		210x290mm				
			Surface treatment:				
			N/A				
			CRC:				
			CRC000				