

E26 5" Trim Series

DESCRIPTION

Open trim with tapered self-flange in the 5" trim family for use in recessed downlighting. Compatible for use in Halo and other housings.

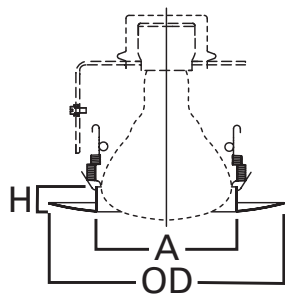
Catalog #		Type
Project		
Comments		Date
Prepared by		

SPECIFICATION FEATURES

- Open trim for BR30 & PAR30 lamps
- Coil spring retention
- Self-flanged trim ring sized to hide gaps caused by construction tolerances

Housings		Max Lamp Compatibility
H5ICAT	H5RICAT	5175WH: 39W PAR30S, 75W PAR30L, 65W BR30
E5ICAT	E5RICAT	5175SN, 5175TBZ: 39W PAR30S, 60W PAR30L, 50W BR30
H25ICAT		39W PAR30S, 60W PAR30L, 50W BR30
H5T	H5RT	75W PAR30S, 75W PAR30L,
E5TAT	E5RTAT	65W BR30

Compatible with Halogen, Incandescent, LED* or CFL* lamps.



Dimensions:

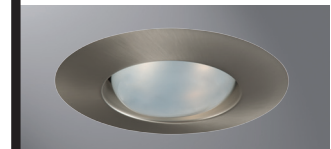
A: 3-9/10" [99mm]

H: 3/4" [19mm]

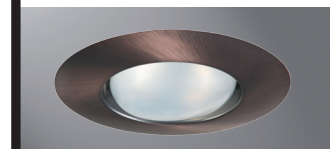
OD: 6-5/8" [168mm]



5175WH
White Trim



5175SN
Satin Nickel Trim



5175TBZ
Tuscan Bronze Trim

5175

5-Inch Open,
Self-flange

ORDERING INFORMATION

SAMPLE NUMBER: 5130WH

Trim	Finish
5175= 5" open, self-flange	WH=Matte White trim SN=Satin Nickel trim TBZ=Tuscan Bronze trim

HALO HOUSING COMPATIBILITY

Trim #	Style	H5ICAT	H5RICAT	E5ICAT	E5RICAT	H25ICAT	H5ICATNB	E5ICATNB	H25ICATNB
5175	Open	•	•	•	•	•	—	—	—
		H5T	H5RT	E5TAT	E5RTAT	H5TNB	E5TATNB		
		•	•	•	•	—	—		

For use in other's housings, refer to U.L. Classification list at www.cooperlighting.com.



LISTED
For use in Halo listed housings.



Select trims are classified for use in others housings.
See www.cooperlighting.com

*UL1993 listed LED & CFL equivalent lamps permitted. Consult lamp manufacturer for conditions of use. Cooper Lighting Solutions does not warranty the lamp.