



**ML7RAB**

**Description**

**ML7RAB**

Provides torsion spring mounting capability for housings that do not have torsion spring brackets. 4 pack includes : 4 - Retrofit adapter bands, 16-metal piercing screws, 8 - retrofit lever-action wire nuts

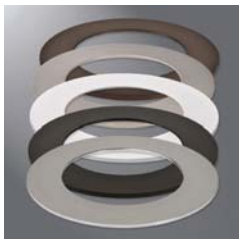


**494OPTIC**

**Description**

**LENS OVER-OPTIC FOR OPEN LED TRIMS**

Optional accessory - lens drops into top of open LED trims (494 series). Precision formed Polymer lens media provides diffusion of LED source brightness. Compatible with: 494SC06, 494H06, 494P06, 494WB06



**DESIGNER FINISH TRIM RINGS**

Source	Model	Description
TRM490TBZ	Tuscan Bronze	<ul style="list-style-type: none"> <li>•Optional accessory</li> <li>•Die-cast trim ring</li> <li>•Thinner Profile provides subtle ceiling appearance (.120" at OD and .180" at ID)</li> </ul>
TRM490PC	Polished Chrome	
TRM490WH	White	
TRM490BK	Black	
TRM490SN	Satin Nickel	



**OT490WH**

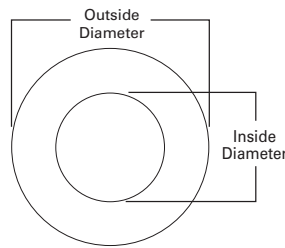
**Description**

**OVERSIZE TRIM RING, WHITE**

Optional accessory - oversize trim ring is designed to replace the standard Halo LED trim ring. For direct attachment to ML7x LED Modules: 600 Series, 900 Series, and 1200 Series.

Dimensions: I.D. = 5-1/8" and O.D. = 9-1/4".

Precision die-cast aluminum ring may be used to hide gaps in the ceiling when retrofitting Halo LED or for covering cut-out irregularities.



Specifications and dimensions subject to change without notice. Consult your Cooper Lighting Solutions Representative or visit [www.cooperlighting.com](http://www.cooperlighting.com) for available options, accessories and ordering information.