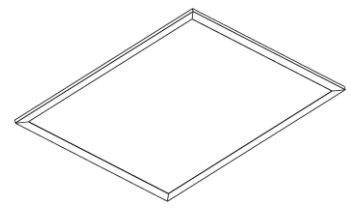
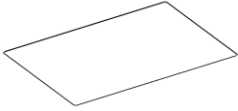


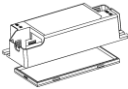
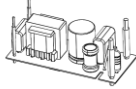
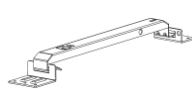


## Dismantling Recommendation on Disposal at End of Life

### •Composition Explanation –Ceiling Type C



Plastic part	Electrical part	Metal part
Optical parts 	PCBA 	Housing(frame+plate) 
Driver box 	Driver PCB 	Bracket 
Others(if included): -Deco rim -Terminal block , -Connector . -Rubbers -Other plastic parts	Other electrical parts (if included): -Sensor	Other metal parts (if included): -Screws -Cable

#### Dismantling

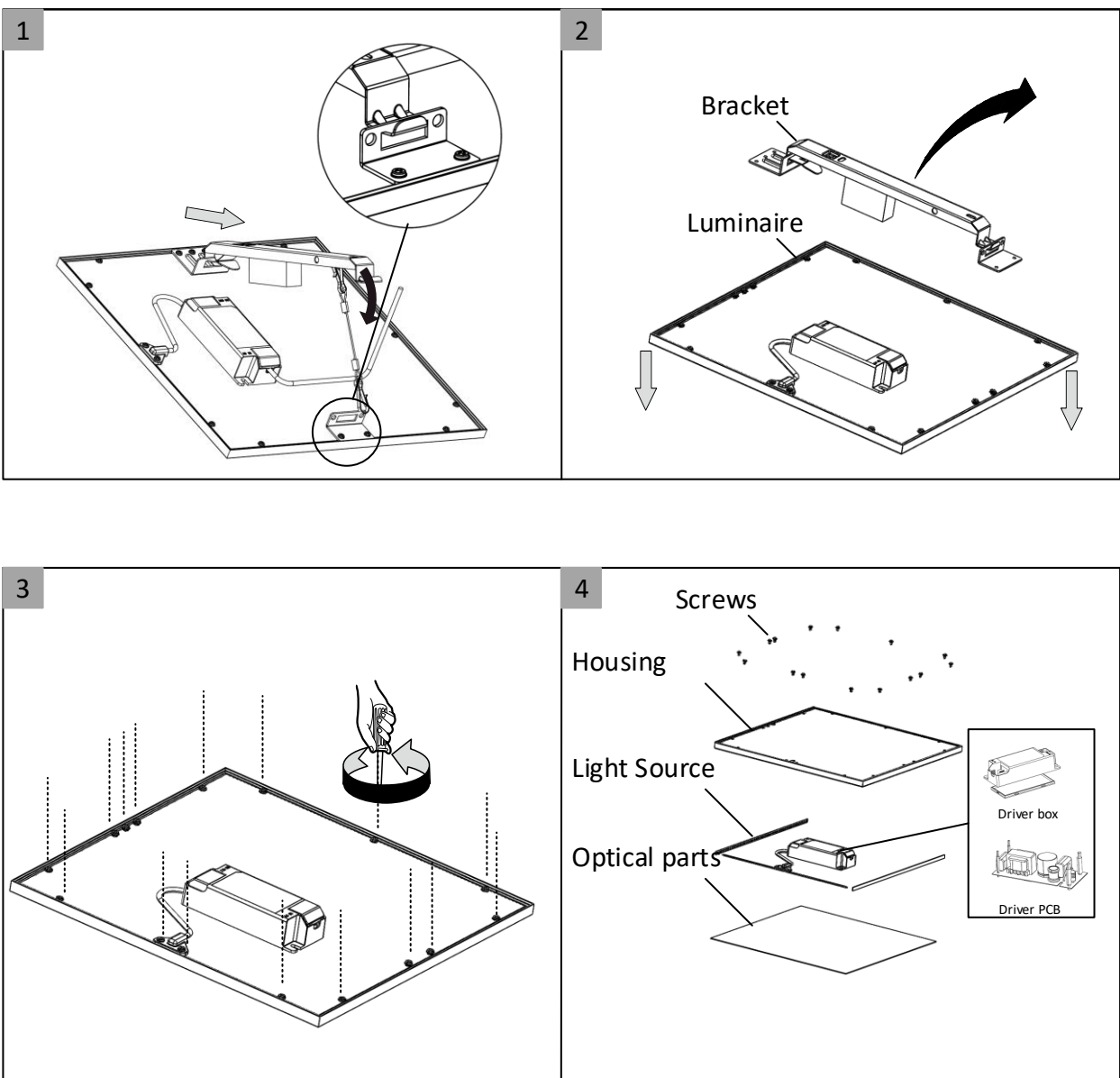
- Steps: refer to the following disassembly instruction
- Type: without permanent damage

#### Recommendation on disposal

- Plastic part :reuse and recycling
- Electrical part :incineration and disposal
- Metal part :recycling

Philips and the Philips shield Emblem are registered trademarks of Koninklijke Philips N.V

### •The Steps to Remove the Components



Philips and the Philips shield Emblem are registered trademarks of Koninklijke Philips N.V