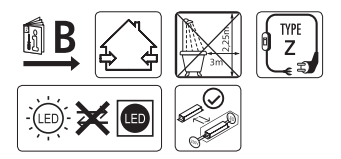
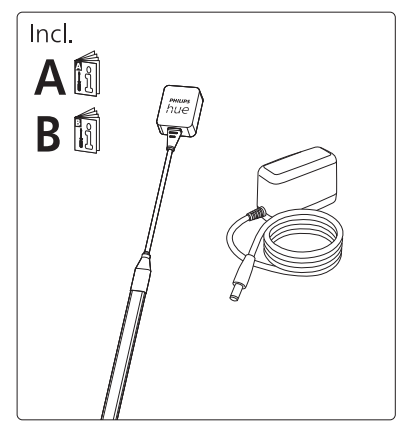




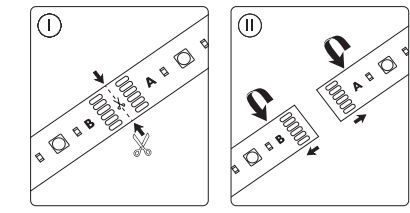
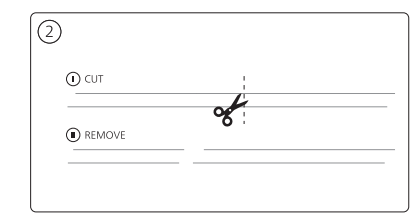
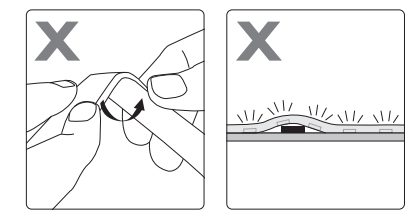
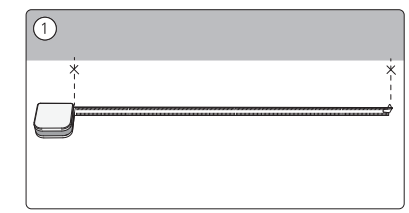
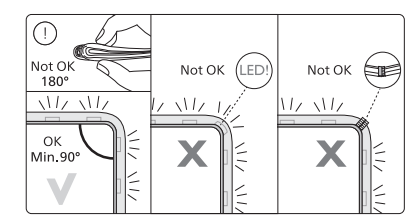
User manual  
Notice d'emploi  
Manual de usuario



**EN IMPORTANT SAFETY INSTRUCTIONS**  
Product appearance may vary from image shown.  
**CAUTION - RISK OF FIRE**  
THIS PRODUCT MUST BE INSTALLED IN ACCORDANCE WITH THE APPLICABLE INSTALLATION CODE BY A PERSON FAMILIAR WITH THE CONSTRUCTION AND OPERATION OF THE PRODUCT AND THE HAZARDS INVOLVED.  
**DANGER - RISK OF SHOCK - DISCONNECT POWER BEFORE INSTALLATION.**

**FR MÉSURES DE SÉCURITÉ À RESPECTER**  
L'apparence du produit peut différer de l'image montrée.  
**ATTENTION - RISQUE D'INCENDIE**  
CE PRODUIT DOIT ÊTRE INSTALLÉ SELON LE CODE D'INSTALLATION PERTINENT? PAR UNE PERSONNE QUI CONNAÎT BIEN LE PRODUIT ET SON FONCTIONNEMENT AINSI QUE LES RISQUES INHÉRENTS.  
**DANGER - RISQUE DE CHOC - COUPER L'ALIMENTATION AVANT L'INSTALLATION.**

**ES INSTRUCCIONES DE SEGURIDAD IMPORTANTES**  
La apariencia del producto puede variar de la imagen mostrada.  
**PRECAUCION - RIESGO DE INCENDIO**  
ESTE PRODUCTO DEBE SER INSTALADO SEGUN EL CODIGO DE INSTALACION APLICABLE POR UNA PERSONA QUE CONOZCA LA CONSTRUCCION Y EL FUNCIONAMIENTO DEL PRODUCTO Y LOS RIESGOS QUE SUPONE.  
**PELIGRO - RIESGO DE DESCARGA ELÉCTRICA - DESCONECTE LA ENERGÍA ANTES DE LA INSTALACIÓN.**



Signify North America Corporation  
400 Crossing Blvd,  
Suite 600 Bridgewater, NJ 08807, USA

Signify Canada Ltd./Signify Canada Ltée,  
281 Hillmount Road,  
Markham, ON, Canada L6C 2S3

Questions or Comments |  
Questions ou commentaires :  
1-800-555-0050

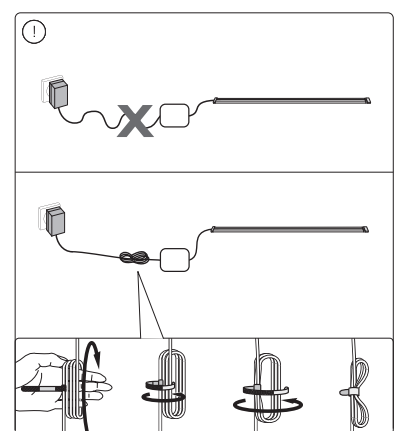
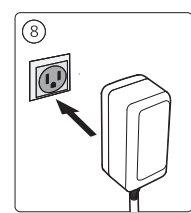
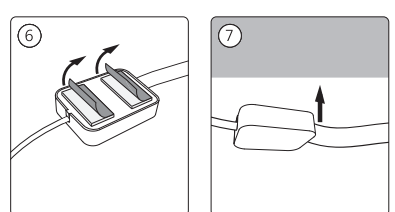
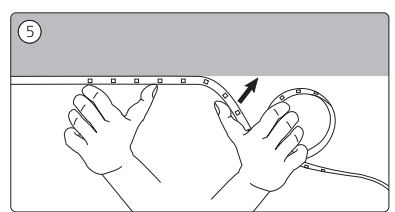
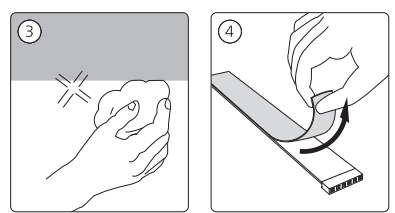
Importado y/o distribuido en México por:  
Signify Mexico S.A. De C.V.  
Av. La Palma No. 6,  
La Herradura, Huixquilucan,  
Edo de México, C.P. 52784, México  
RFC PME-620620-E84

Centro de contacto:  
800-508-9000

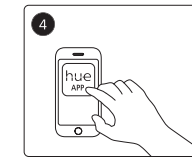
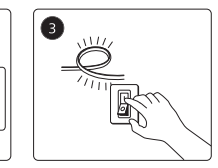
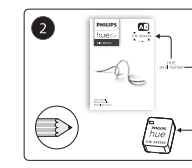
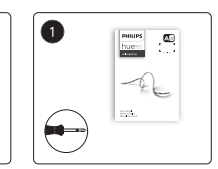
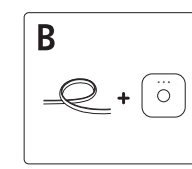
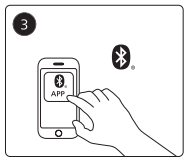
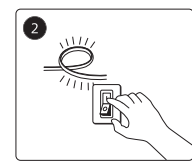
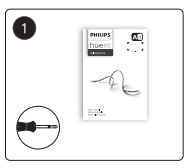
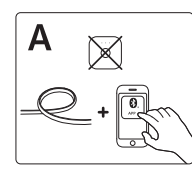
www.philips-hue.com  
442296457611

© 2024 Signify Holding  
All rights reserved

Last update: 02/2024



To connect your new Hue luminaire, select the installation instruction (A or B) that is applicable for you.  
**Discover**  
For more information visit [philips-hue.com](http://philips-hue.com)



**EN**  
To connect your new Hue luminaire, select the installation instruction (A or B) that is applicable for you.  
**Discover**  
For more information visit [www.philips-hue.com](http://www.philips-hue.com)

**FR**  
Pour connecter votre nouveau luminaire Hue, choisissez les instructions d'installation (A ou B) qui vous sont applicables.  
**Découverte**  
Pour plus d'informations, rendez-vous sur [www.philips-hue.com](http://www.philips-hue.com)

**ES**  
Para conectar su nueva luminaria Hue, seleccione las instrucciones de instalación (A o B) que se aplican a su caso.  
**Descubrir**  
Para obtener más información, visita [www.philips-hue.com](http://www.philips-hue.com)