

**PHILIPS**

hue personal  
wireless  
lighting

**Gradient lightstrip**



HUE serial number



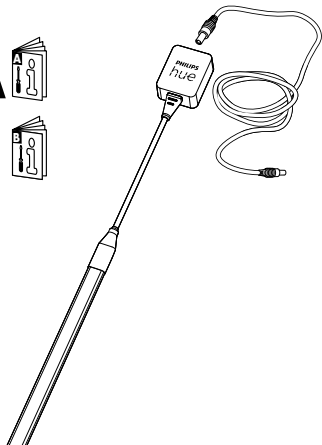
User manual  
Notice d'emploi  
Manual de usuario

Incl.

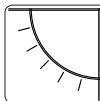
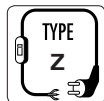
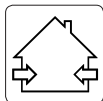
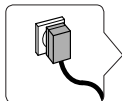
**A**



**B**



**B**



## **EN** IMPORTANT SAFETY INSTRUCTIONS

Product appearance may vary from image shown.

CAUTION - RISK OF FIRE

THIS PRODUCT MUST BE INSTALLED IN ACCORDANCE WITH THE APPLICABLE INSTALLATION CODE BY A PERSON FAMILIAR WITH THE CONSTRUCTION AND OPERATION OF THE PRODUCT AND THE HAZARDS INVOLVED.

DANGER - RISK OF SHOCK - DISCONNECT POWER BEFORE INSTALLATION.

## **FR** MESURES DE SÉCURITÉ À RESPECTER

L'apparence du produit peut différer de l'image montrée.

ATTENTION - RISQUE D'INCENDIE

CE PRODUIT DOIT ÊTRE INSTALLÉ SELON LE CODE D'INSTALLATION PERTINENT? PAR UNE PERSONNE QUI CONNAÎT BIEN LE PRODUIT ET SON FONCTIONNEMENT AINSI QUE LES RISQUES INHÉRENTS.

DANGER - RISQUE DE CHOC - COUPER L'ALIMENTATION AVANT L'INSTALLATION.

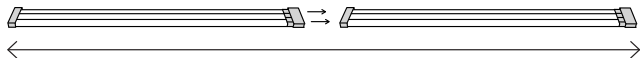
## **ES** INSTRUCCIONES DE SEGURIDAD IMPORTANTES

La apariencia del producto puede variar de la imagen mostrada.

PRECAUCION - RIESGO DE INCENDIO

ESTE PRODUCTOR DEBE SER INSTALADO SEGUN EL CODIGO DE INSTALACION APLICABLE POR UNA PERSONA QUE CONOZCA LA CONSTRUCCION Y EL FUNCIONAMIENTO DEL PRODUCTO Y LOS RIESGOS QUE SUPONE.

PELIGRO - RIESGO DE DESCARGA ELÉCTRICA - DESCONECTE LA ENERGÍA ANTES DE LA INSTALACIÓN.



Max. 32 ft.



OK

Not OK

LED!

Not OK

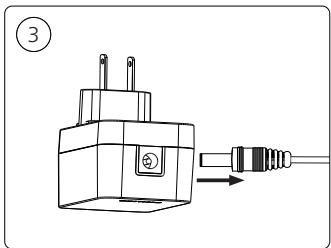
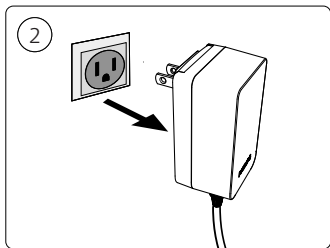
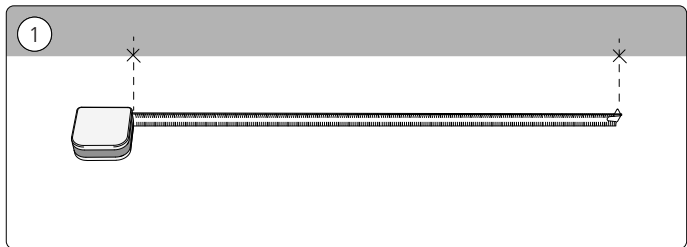
Min. 90°

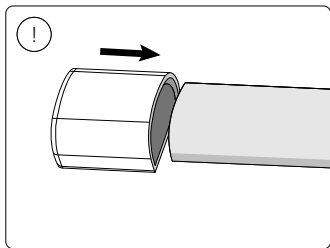
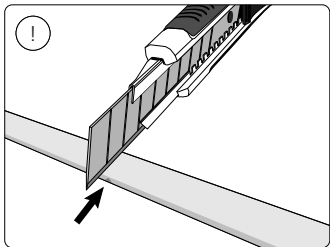
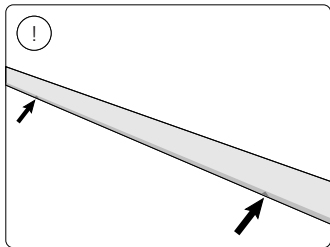


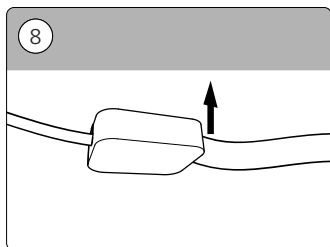
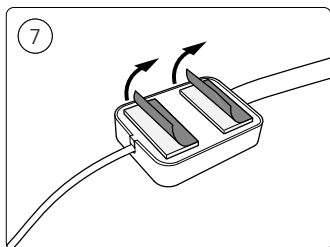
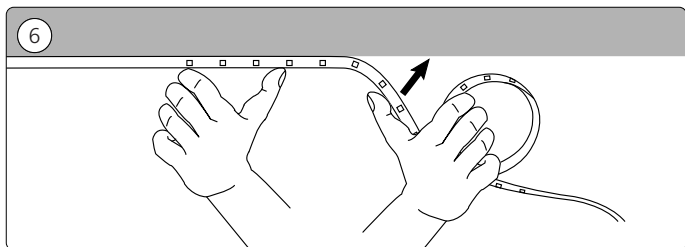
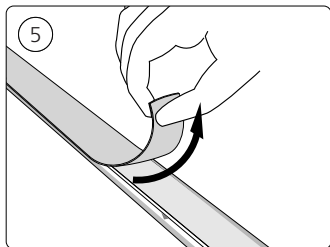
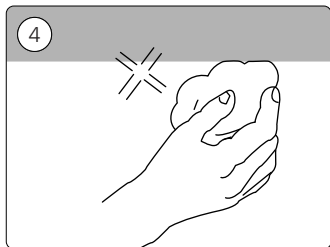
X

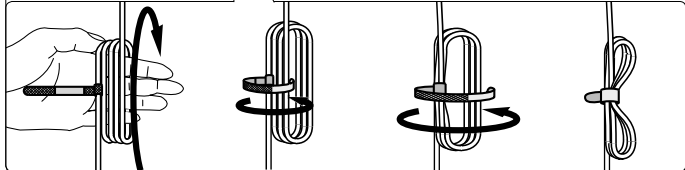
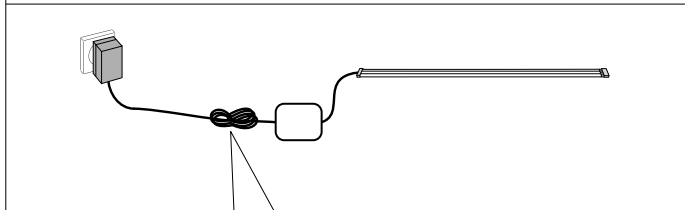
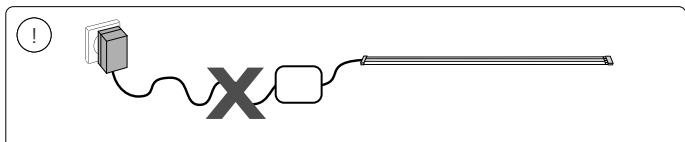
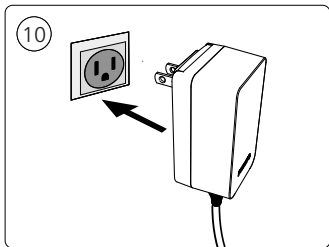
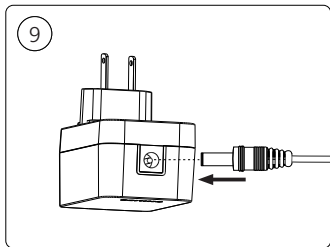
X



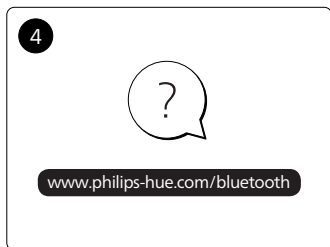
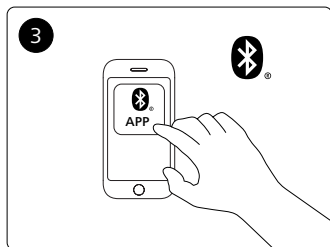
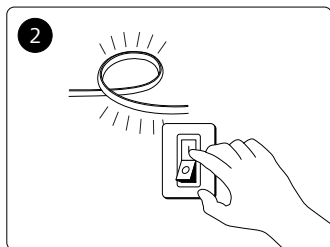
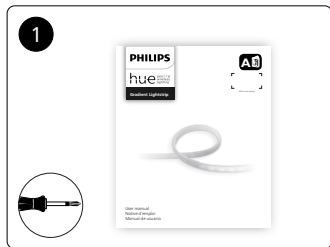
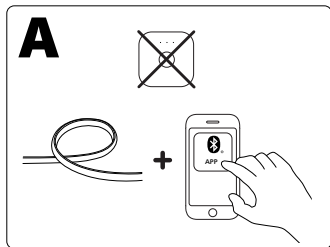


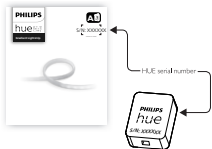
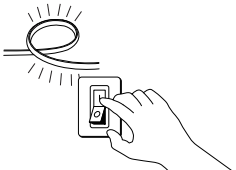










**B****1****2****3****4****5**

[www.philips-hue.com/philipshueapp](http://www.philips-hue.com/philipshueapp)

**6**

**EN**

To connect your new Hue luminaire, select the installation instruction (A or B) that is applicable for you.

**Discover**

For more information visit [www.philips-hue.com](http://www.philips-hue.com)

**FR**

Pour connecter votre nouveau luminaire Hue, choisissez les instructions d'installation (A ou B) qui vous sont applicables.

**Découverte**

Pour plus d'informations, rendez-vous sur [www.philips-hue.com](http://www.philips-hue.com)

**ES**

Para conectar su nueva luminaria Hue, seleccione las instrucciones de instalación (A o B) que se aplican a su caso.

**Descubrir**

Para obtener más información, visita [www.philips-hue.com](http://www.philips-hue.com)



Signify North America Corporation  
400 Crossing Blvd, Suite  
600 Bridgewater, NJ 08807, USA

Signify Canada Ltd./Signify Canada Ltée.  
281 Hillmount Road,  
Markham, ON, Canada L6C 2S3

Questions or comments / Questions ou commentaires :  
1-800-555-0050

Importado y/o distribuido en México por:  
Signify Mexico S.A. De C.V.  
Av. La Palma No.6, La Herradura, Huixquilucan,  
Edo de México, C.P. 52784, Mexico  
R.F.C. PME-620620-E84

Centro de Contacto:  
01-800-508-9000

© 2022 Signify Holding  
All rights reserved

[www.philips-hue.com](http://www.philips-hue.com)

3222 639 08592  
Last update: 04/2022